

CERTIFICATE OF LOCATION OF GOVERNMENT CORNER

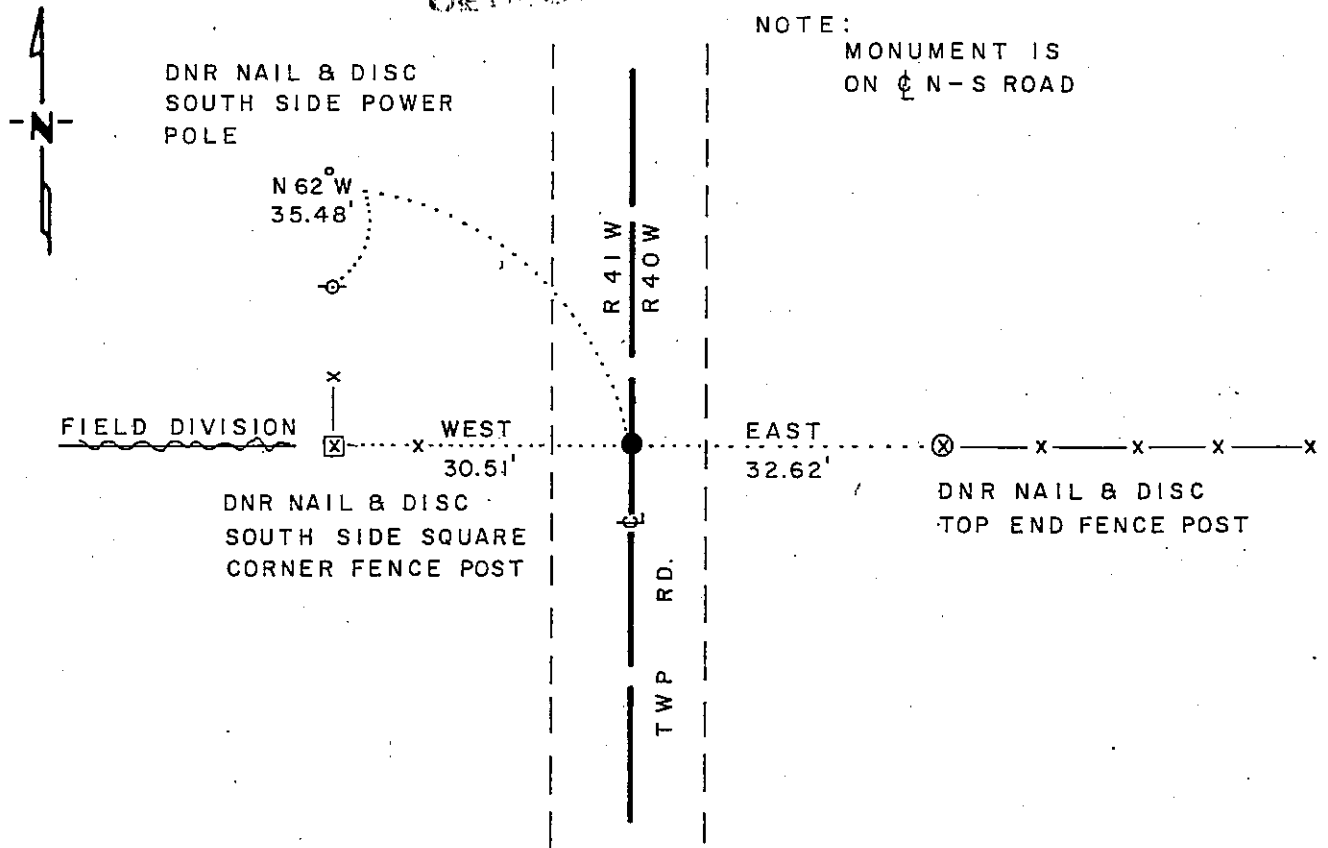
EAST QUARTER Corner of Section 1, Township 102 N, Range 41 W, 5 th. P.M.

STATE OF MINNESOTA, County of NOBLES

At the corner location shown on the sketch

- On 11-7-78 found a 60d NAIL INSIDE A 3/4" x 1 1/2" IRON PIPE,
DATE
DOWN 0.30', OLD WOOD STAKE ALONGSIDE
 - left monument as found, lowered monument, removed monument (explain)
- On 8-9-88 placed a 1 1/4" x 1 1/4" x 20" PERFORATED STEEL TUBE WITH
DATE
ALUMINUM CAP STAMPED "DNR SURVEY MARKER", DOWN 0.30', OVER IRON

SKETCH OF REFERENCE TIES



BEARINGS OBSERVED WITH COMPASS

Statement of evidence relative to this corner location is on back of page

J.B.M. 8-17-88
G-965

I hereby certify that this document and the data contained herein was prepared by me or under my direct supervision.

Lowell R. Pommeroy Jr. 9-20-88
SIGNATURE DATE

Registration No. 17005

- Land Surveyor, Professional Engineer
- County Surveyor, County Engineer

OFFICE OF THE COUNTY RECORDER

County of Nobles

I hereby certify that this document was filed in the Co. Recorders office at 4:25 P.M. on the 21st day of September A.D., 1988

County Recorder Jerry Howard

By _____, Deputy

DOCUMENT NO. 234941

The DNR Bureau of Engineering contacted the following offices for survey information on this corner:

MN Secretary of State
Nobles County Recorder and Highway Engineer
Mn/DOT at Windom
Martin Land Surveying at Worthington
Rieke-Carroll-Muller

- 1867 The U.S. General Land Office notes in the Secretary of State's Office show the corner is in a small pond with a witness corner set 50 links north. Witness corner is marked with a post set in a mound.
- No Date Surveyor's Record Book A-1, on page 23, obtained from the County Recorder's Office, contains a survey, surveyor not indicated. Survey shows this corner measures:
39.60 chains from the center of Section 6
19.91 chains north of a possible sixteenth corner
No mention of a monument is made, or if the distances are to the actual corner or witness corner.
- 1893 Surveyor's Record Book A-2, on page 138, obtained from the County Recorder's Office, contains a survey by Milton S. Smith, County Surveyor. Survey shows "set stone at 1/4 post on west line of Section 6, Township 102 North, Range 40 West, 2 rods south of witness corner with original stake in mound." Corner is shown 2644 ft. from the northeast corner Section 1.
- 1895 Surveyor's Record Book A-2, on page 198, obtained from the County Recorder's Office, contains a survey by Milton S. Smith, County Surveyor. Survey shows stone at 1/4 post with witness corner .50 north, original stake and mound. Corner measures 2644 ft. from the northeast corner Section 1.
- 1914 Surveyor's Record Book B, on page 56, obtained from the County Recorder's Office, contains a survey by William Saxon, County Surveyor. Survey shows an old stone at this corner which measures:
2643 ft. from the northeast corner Section 1
2640 ft. from the northeast corner Section 12
- 1965 June, the DNR Bureau of Engineering traversed to the area of the corner and found an iron monument 3 ft. below road surface with wood stake over. Monument is at intersection of road north-south and fence lines east and west.
- 1970 January, the DNR Bureau of Engineering traversed to the area of the corner and found a spike set in 1965 at the corner. Three reference ties were recorded, corner measures:
2676.10 ft. from the northeast corner Section 12
- 1972 June, the DNR Bureau of Engineering traversed to the area of the corner and found the corner as previously described.
- 1978 November, the DNR Bureau of Engineering conducted a search for this corner and found a 60d nail inside a 3/4" by 16 1/2" iron pipe, down 0.3 ft. with an old wood stake southeast of the iron down 0.5 ft. Dug a 3 ft. by 3 ft. hole centered on the found iron, down to a depth of 3 ft., but found nothing. Reset the iron as found, which is 1.8 ft. west of the centerline of a north-south road, in line with a fence east and field division west. Iron measures:
2638.32 ft. from the northeast corner Section 12
2641.09 ft. from the northeast corner Section 1
No evidence of the witness corner was found.
- Analysis of the available information led the DNR Bureau of Engineering to conclude that the found iron pipe marks the location of the corner.
- 1988 August, the DNR Bureau of Engineering revisited the corner and found the iron pipe as previously located in good condition. Placed a DNR Survey Marker over the iron pipe.

Exact Copy Compared
Photo Taken
Fee \$10