

# CERTIFICATE OF LOCATION OF GOVERNMENT CORNER

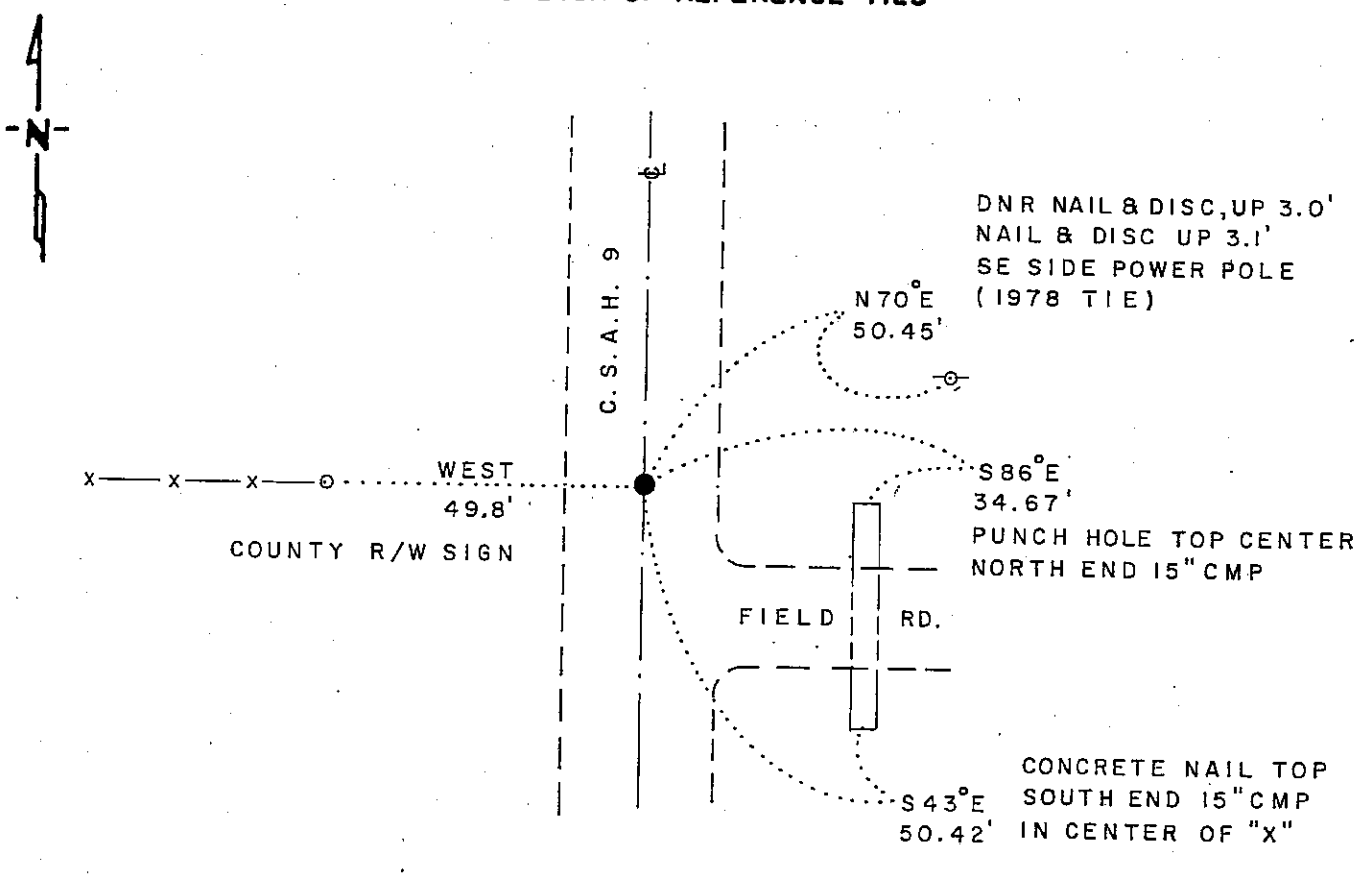
EAST QUARTER Corner of Section 11, Township 102 N, Range 41 W, 5th. P.M.

STATE OF MINNESOTA, County of NOBLES

At the corner location shown on the sketch

- On 9-7-78 found a 3/8" x 12" SPIKE, DOWN 0.2"  
DATE
- left monument as found,  lowered monument,  removed monument (explain)
- On 8-9-88 placed a 1 1/4" x 1 1/4" x 20" PERFORATED STEEL TUBE WITH ALUMINUM CAP STAMPED "DNR SURVEY MARKER"  
DATE

### SKETCH OF REFERENCE TIES



### BEARINGS OBSERVED WITH COMPASS

Statement of evidence relative to this corner location is on back of page

J.B.M. 8-25-88  
G-965

I hereby certify that this document and the data contained herein was prepared by me or under my direct supervision.

Lowell B. Pommeroy Jr. 9-20-88  
SIGNATURE DATE

Registration No. 17005

Land Surveyor,  Professional Engineer

County Surveyor,  County Engineer

OFFICE OF THE COUNTY RECORDER  
County of Nobles

I hereby certify that this document was filed in the Co. Recorders office at 4:35 P. M. on the 21st day of September A.D., 19 88

County Recorder Joseph Howard  
By \_\_\_\_\_, Deputy

DOCUMENT NO. 234943

East Quarter Corner Section 11, Township 102 North, Range 41 West

The DNR Bureau of Engineering contacted the following offices for survey information on this corner:

MN Secretary of State  
Nobles County Recorder and Highway Engineer  
Mn/DOT at Windom  
Martin Land Surveying at Worthington  
Rieke-Carroll-Muller

- 1868 The U.S. General Land Office notes in the Secretary of State's Office show the corner is a post, set in a mound with pits.
- No Surveyor's Record Book A-1, on page 42, obtained from the County Recorder's  
Date Office, contains a survey, surveyor not indicated. Survey shows this corner is marked by a post with mound and pits. Corner measures 20.40 chains from a sixteenth corner to the east.
- 1896 Surveyor's Record Book A-2, on page 242, obtained from the County Recorder's Office, contains a survey by Milton S. Smith, County Surveyor. Survey shows a stone at this corner.
- 1923 A Field Book of ties to government corners along State Road #14, obtained from the County Highway Engineer, shows this corner as a wood stake with three reference ties. From stationing, this corner measures:  
2645.6 ft. from the northeast corner Section 14  
2655.3 ft. from the northeast corner Section 11
- 1963 A Field Book of ties to government corners along C.S.A.H. 9, obtained from the County Highway Engineer, shows this corner as a found 1 by 2 down 1.0 ft. Raised the corner with a 2 by 2 and took four reference ties. Corner measures from stationing:  
2644.25 ft. from the northeast corner Section 14  
2653.70 ft. from the northeast corner Section 11
- 1964 A Field Book of ties and monuments of government corners, obtained from the County Highway Engineer, shows that in 1963 a stake was found and an iron pin was placed. Now an iron pin was found and three reference ties are shown.
- 1972 June 20, the DNR Bureau of Engineering traversed to the area of the corner and found an iron pipe down 0.3 ft. at the intersection of a north-south road and fence line east. Corner was located from County Highway Department ties. Corner measures:  
2644.27 ft. from the northeast corner Section 14  
2653.80 ft. from the northeast corner Section 11
- 1978 August 21, the DNR Bureau of Engineering hired a backhoe to dig for evidence of this corner. Dug an 11 ft. by 10 ft. hole centered at the intersection of a north-south road and fence lines east and west. Found a 3/8" by 12" spike down 0.2 ft. with a 60d nail on its north side. Found a wood hub under the spike. Continued digging down to 60" but found nothing else. Spike is at the above mentioned intersection and measures:  
2642.42 ft. from the northeast corner Section 14  
2653.48 ft. from the northeast corner Section 11
- Analysis of the available information led the DNR Bureau of Engineering to conclude that the found spike and wood hub marks the locations of the corner.
- 1988 August, the DNR Bureau of Engineering revisited the corner and found that county road improvements have destroyed many of the 1978 ties. Went to the County Highway Engineer's Office and obtained a field book of ties to government corners. Book of ties shows that in 1985 an iron pin was found down 12", being the same iron pin found in 1964. New reference ties were taken in 1986. The County Highway Engineer said they documented what they had found and took ties, setting a 1/2" iron rod at the corner after highway construction. The DNR Bureau of Engineering was NOT given permission to dig in the pavement to confirm what the County had set. Used the county ties and received a metal attraction at their intersection. Set a DNR Survey Marker at this location. It is believed that the 3/8" by 12" spike found by the DNR Bureau of Engineering in 1978 is one in the same with the counties found iron rod, which is the location of the corner.