

# CERTIFICATE OF LOCATION OF GOVERNMENT CORNER

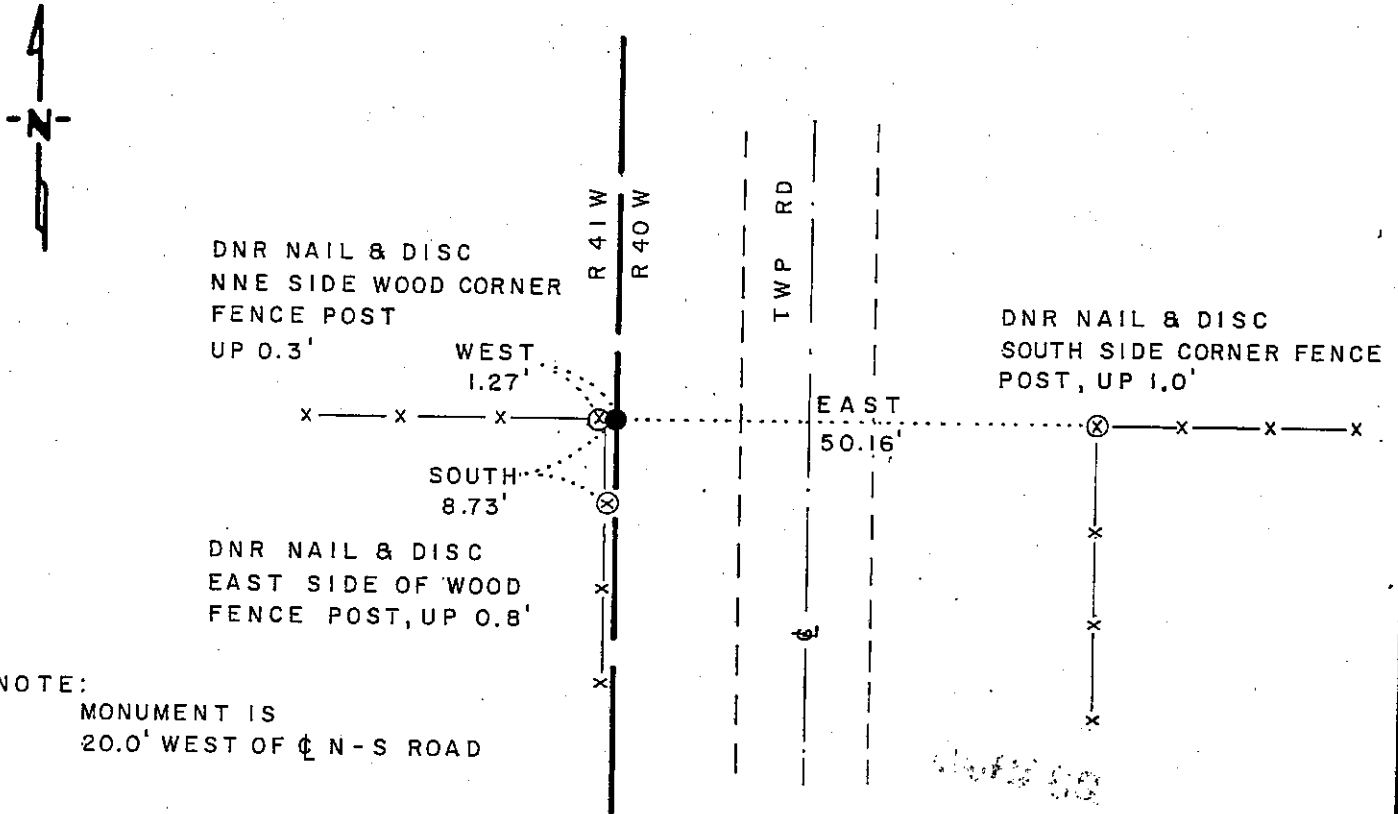
EAST QUARTER Corner of Section 12, Township 102 N, Range 41 W, 5th P.M.

STATE OF MINNESOTA, County of NOBLES

At the corner location shown on the sketch

- On \_\_\_\_\_ found a \_\_\_\_\_
- left monument as found,  lowered monument,  removed monument (explain)
- On 8-8-88 placed a 1 1/4" x 1 1/4" x 20" PERFORATED STEEL TUBE WITH ALUMINUM CAP STAMPED "DNR SURVEY MARKER", FLUSH

### SKETCH OF REFERENCE TIES



### BEARINGS OBSERVED WITH COMPASS

Statement of evidence relative to this corner location is on back of page

J.B.M. 8-25-88  
G-965

I hereby certify that this document and the data contained herein was prepared by me or under my direct supervision.

Lowell R. Pommeroy 9-20-88  
SIGNATURE DATE

Registration No. 17005

- Land Surveyor,  Professional Engineer
- County Surveyor,  County Engineer

OFFICE OF THE COUNTY RECORDER  
County of Nobles

I hereby certify that this document was filed in the Co. Recorders office at 4:50 P. M. on the 21st day of September A.D., 1988

County Recorder James Howard  
By \_\_\_\_\_, Deputy

DOCUMENT NO. 234946

East Quarter Corner Section 12, Township 102 North, Range 41 West

The DNR Bureau of Engineering contacted the following offices for survey information on this corner:

MN Secretary of State  
 Nobles County Recorder and Highway Engineer  
 Mn/DOT at Windom  
 Martin Land Surveying at Worthington  
 Rieke-Carroll-Muller

- 1867 The U.S. General Land Office notes in the Secretary of State's Office show the corner is in a small wet marsh with a witness corner set 50 links north. Witness corner is marked with a post set in a mound.
- No Date Surveyor's Record Book A-1, on page 42, obtained from the County Recorder's Office, contains a survey, surveyor not indicated. Survey shows this corner is marked by a post with mound and pits. Corner measures:  
 40.00 chains from the center of Section 12  
 19.73 chains from a sixteenth corner to the south  
 39.46 chains from the northeast corner Section 13
- 1914 Surveyor's Record Book B, on page 56, obtained from the County Recorder's Office, contains a survey by William Saxon, County Surveyor. Survey shows an old stone at this corner which measures:  
 2639 ft. from the northeast corner Section 12  
 2646 ft. from the northeast corner Section 13
- 1965 June, the DNR Bureau of Engineering traversed to the area of the corner and found no evidence of it. Established a position for the corner on line between the east quarter corner Section 1 and northeast corner Section 13 in line with a fence west, set nothing. This position measures:  
 2598.9 ft. from the northeast corner Section 12  
 2644.6 ft. from the northeast corner Section 13
- 1972 June, the DNR Bureau of Engineering traversed to the area of the corner and located a fence line west. Established a position for this corner on line between the east quarter corner Section 1 and northeast corner Section 13 in line with the fence west. Corner is shown to measure:  
 2598.90 ft. from the northeast corner Section 12  
 2644.75 ft. from the northeast corner Section 13
- 1978 August, the DNR Bureau of Engineering conducted a search for this corner and found numerous stones by a corner fence post, but none looked set and none had markings. Fences are west and south from the corner. Set a point 1 ft. east of this fence corner and measured:  
 2644.72 ft. from the northeast corner Section 13  
 2637.32 ft. from the northeast corner Section 12
- Analysis of the available information led the DNR Bureau of Engineering to conclude that the point set 1 ft. east of the corner fence post marks the location of the corner.
- 1988 August, the DNR Bureau of Engineering revisited the corner and set a DNR Survey Marker at the 1978 position.