

# CERTIFICATE OF LOCATION OF GOVERNMENT CORNER

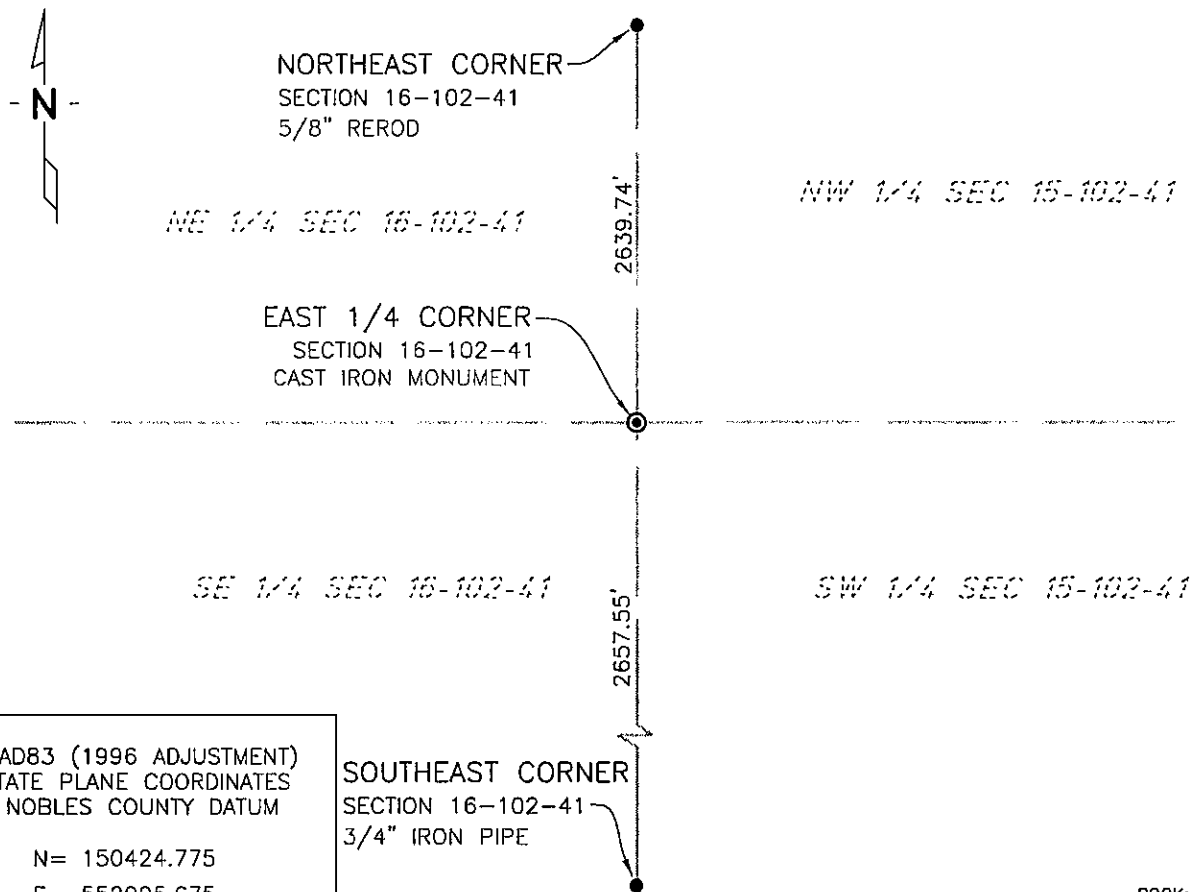
EAST QUARTER Corner of Section 16, Township 102 N, Range 41 W, 5th P.M.

STATE OF MINNESOTA, County of NOBLES

At the corner location shown on the sketch:

- On 7/14/03 found a CAST IRON MONUMENT  
DATE
- left monument as found,  lowered monument,  removed monument (explain)
- On \_\_\_\_\_ placed a \_\_\_\_\_  
DATE

### SKETCH OF REFERENCE TIES



NAD83 (1996 ADJUSTMENT)  
STATE PLANE COORDINATES  
NOBLES COUNTY DATUM

N= 150424.775  
E= 552005.675

SOUTHEAST CORNER  
SECTION 16-102-41  
3/4" IRON PIPE

BOOK: 110 PG. 41  
I:\NOBLS\CERTIFICATES\2005\CAD\E16-102-41

Statement of evidence relative to this corner location is on back of page.

I hereby certify that this document and the data contained herein was prepared by me or under my direct supervision.

Janele Fowlds      4-24-06  
JANELE FOWLDS      DATE

Registration No. 26748

- Land surveyor,     Professional Engineer
- County Surveyor,    County Engineer

OFFICE OF THE COUNTY RECORDER

County of \_\_\_\_\_

I hereby certify that this document was filed in the Co. Recorders office at \_\_\_\_M. on the \_\_\_\_\_ day of \_\_\_\_\_ A.D., 19\_\_

County Recorder \_\_\_\_\_

By \_\_\_\_\_, Deputy

DOCUMENT NO. \_\_\_\_\_

Statement of Evidence

East Quarter Corner Section 16, Township 102 North, Range 41 West

Original Notes

- 1973 Nobles County Highway Department records show an iron pin.
- No Date A plat of Ebeling's Subdivision, in Dewald Township, shows a 3" MN/DOT monument, at this corner.
- 2003 On July 14, Bolton & Menk, Inc., Mankato, found a cast iron monument 0.2 foot below surface.