

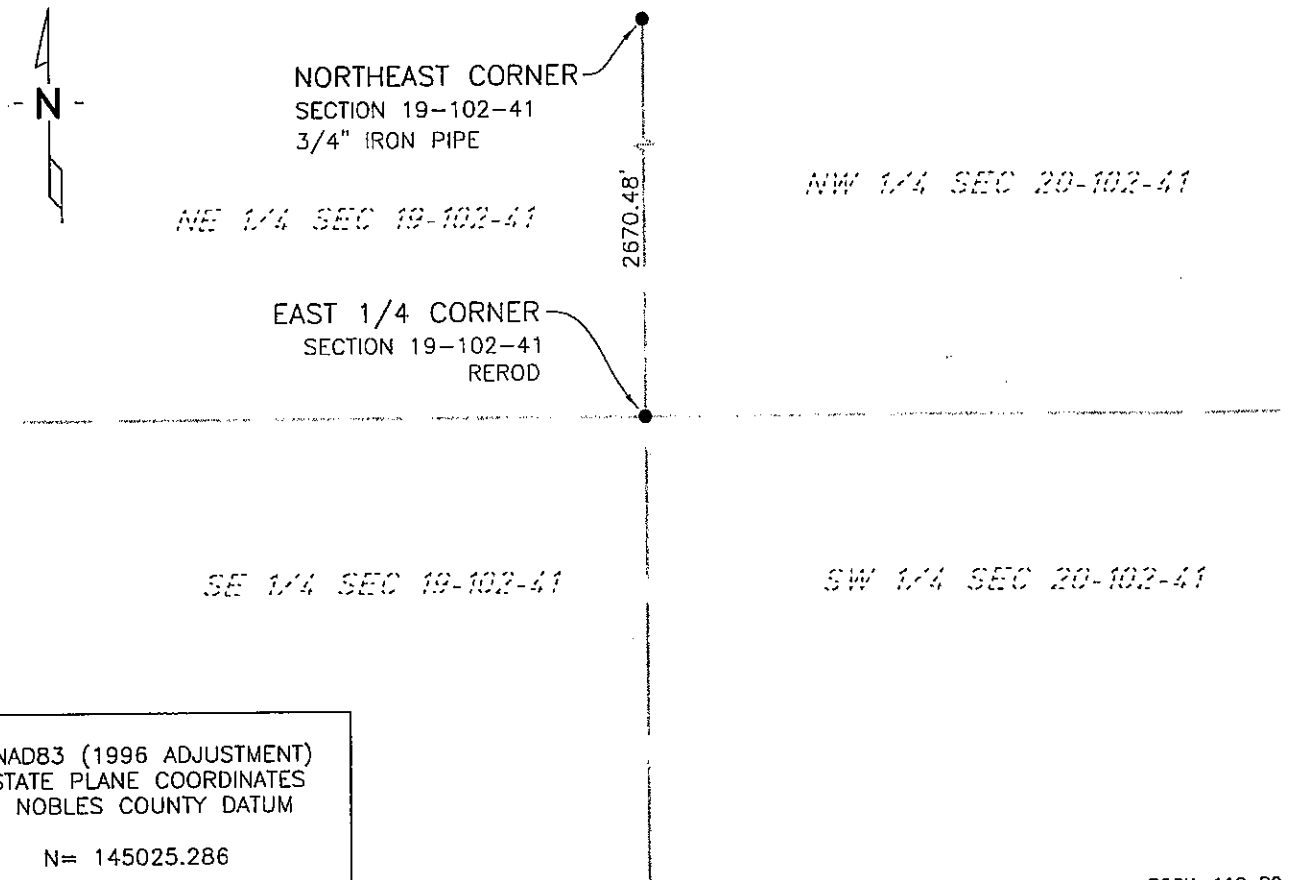
# CERTIFICATE OF LOCATION OF GOVERNMENT CORNER

EAST QUARTER Corner of Section 19, Township 102 N, Range 41 W, 5th P.M.  
STATE OF MINNESOTA, County of NOBLES

At the corner location shown on the sketch:

- On 7/14/03 found a REROD  
DATE
- left monument as found,  lowered monument,  removed monument (explain)
- On \_\_\_\_\_ placed a \_\_\_\_\_  
DATE

### SKETCH OF REFERENCE TIES



NAD83 (1996 ADJUSTMENT)  
STATE PLANE COORDINATES  
NOBLES COUNTY DATUM

N= 145025.286  
E= 541354.051

BOOK: 110 PG. 41  
I:\NOBLS\CERTIFICATES\2005\CAD\E19-102-41

Statement of evidence relative to this corner location is on back of page.

I hereby certify that this document and the data contained herein was prepared by me or under my direct supervision.

Janele Fowlds 4-24-06  
JANELE FOWLDS DATE

Registration No. 26748

- Land surveyor,  Professional Engineer
- County Surveyor,  County Engineer

OFFICE OF THE COUNTY RECORDER

County of \_\_\_\_\_

I hereby certify that this document was filed in the Co. Recorders office at \_\_\_\_M. on the \_\_\_\_\_ day of \_\_\_\_\_ A.D., 19\_\_

County Recorder \_\_\_\_\_

By \_\_\_\_\_, Deputy

DOCUMENT NO. \_\_\_\_\_

Statement of Evidence

East Quarter Corner Section 19, Township 102 North, Range 41 West

Original Notes

- 1923 Nobles County Highway Department records show a stake.
- 1945 Nobles County Highway Department records show a stake.
- 1967 Nobles County Highway Department records show a 2X2 stake was placed, has the following ties:  
Nail & Disk in Power Pole – Northeast 52.85’  
Nail & Disk in Post – Northwest 66.75’  
Nail & Disk in Top Cor FE Post – Southeast 73.45’  
Nail & Disk in Top Cor FE Post – Southwest 59.67’  
Nail & Disk in Light Pole – Southwest 61.50’
- 1997 On July 7, a Madsen Land Surveying survey shows a found iron monument at the corner. No description of what type of iron monument was found.
- 2003 On July 14, Bolton & Menk, Inc., Mankato, found a rerod at the surface of the county road.

The evidence is not conclusive as to the true corner location, however the occupational and collateral evidence suggest that this is a reasonable location as to the corner. Additional information regarding the preparation of this certificate can be obtained by contacting: Bolton & Menk, Inc., Mankato, MN.