

CERTIFICATE OF LOCATION OF GOVERNMENT CORNER

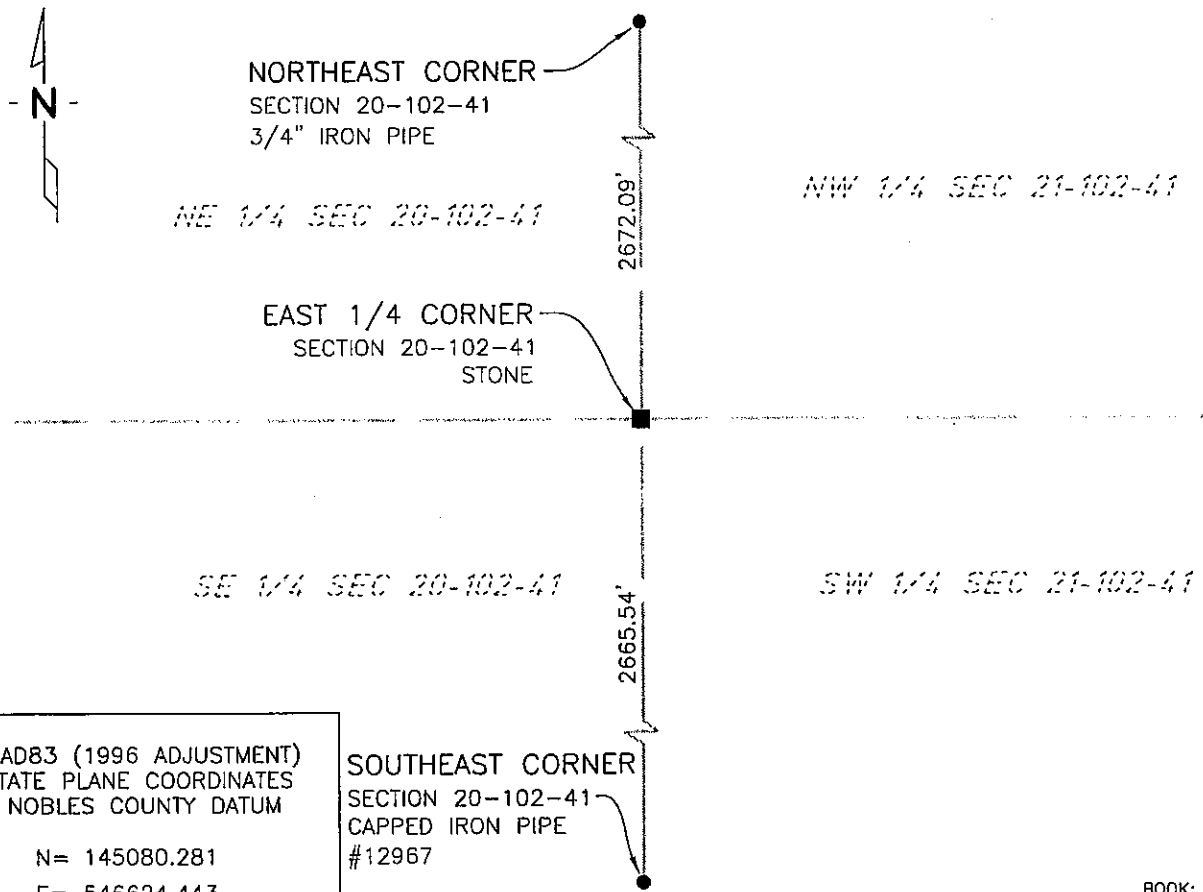
EAST QUARTER Corner of Section 20, Township 102 N, Range 41 W, 5th P.M.

STATE OF MINNESOTA, County of NOBLES

At the corner location shown on the sketch:

- On 7/14/03 found a STONE
DATE
- left monument as found, lowered monument, removed monument (explain)
- On _____ placed a _____
DATE

SKETCH OF REFERENCE TIES



BOOK: 110 PG. 41

I:\NOBLS\CERTIFICATES\2005\CAD\E20-102-41

Statement of evidence relative to this corner location is on back of page.

I hereby certify that this document and the data contained herein was prepared by me or under my direct supervision.

Janele Fowlds 4-24-06
JANELE FOWLDS DATE

Registration No. 26748

- Land surveyor, Professional Engineer
- County Surveyor, County Engineer

OFFICE OF THE COUNTY RECORDER

County of _____

I hereby certify that this document was filed in the Co. Recorders office at ____M. on the _____ day of _____ A.D., 19__

County Recorder _____

By _____, Deputy

DOCUMENT NO. _____

Statement of Evidence

East Quarter Corner Section 20, Township 102 North, Range 41 West

Original Notes

- 1896 Nobles County Highway Department records show a stone monument.
- 1901 Nobles County Highway Department records show a stone monument.
- 1950 Nobles County Highway Department records show a stone monument.
- 1987 A survey, by Bell Surveying Inc., Worthington, shows a found stone monument. Bell then set a rebar marked with registration 16093 above stone.
- 2003 On July 14, Bolton & Menk, Inc., Mankato, found a stone monument 0.4 foot below surface.