

CERTIFICATE OF LOCATION OF GOVERNMENT CORNER

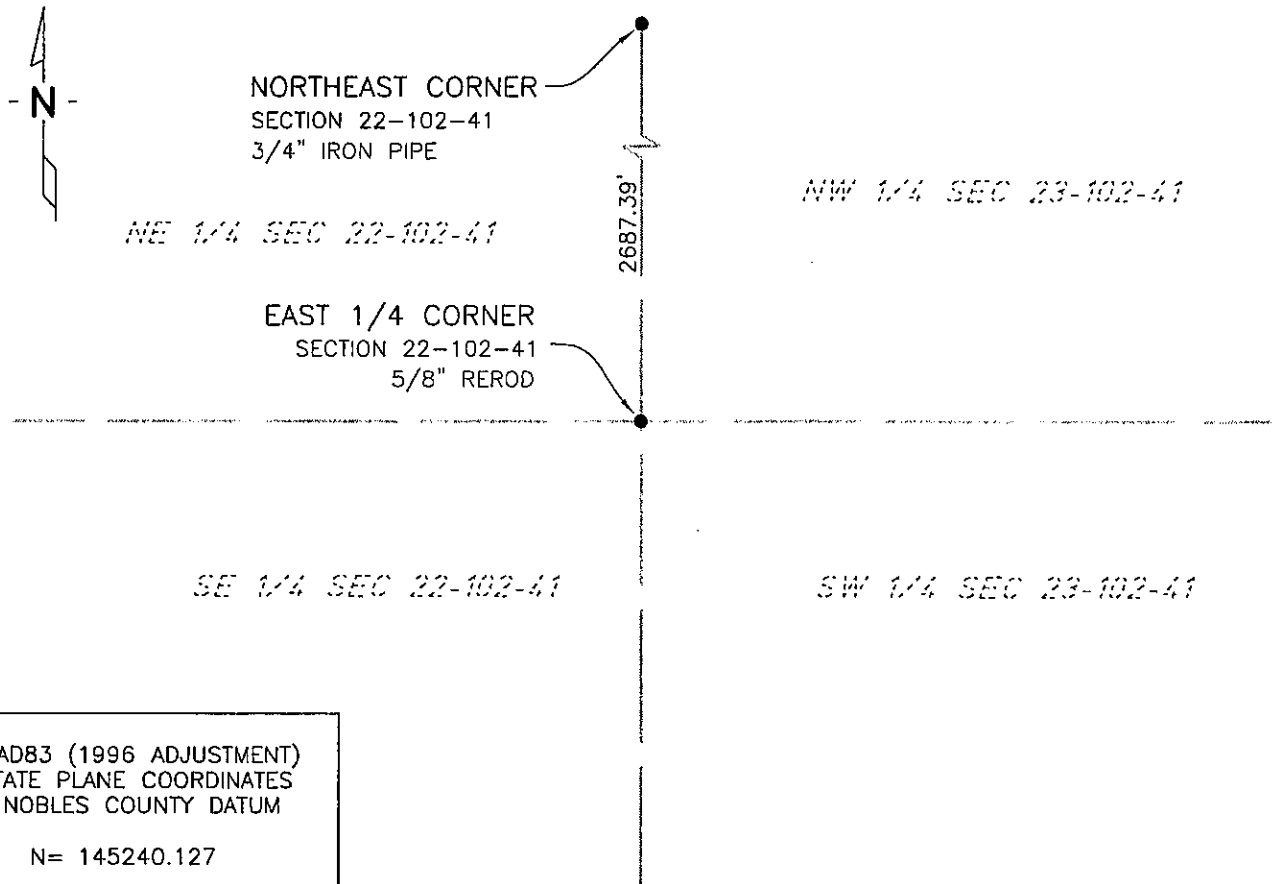
EAST QUARTER Corner of Section 22, Township 102 N, Range 41 W, 5th P.M.

STATE OF MINNESOTA, County of NOBLES

At the corner location shown on the sketch:

- On 7/14/03 found a 5/8" REROD
DATE
- left monument as found, lowered monument, removed monument (explain)
- On _____ placed a _____
DATE

SKETCH OF REFERENCE TIES



NAD83 (1996 ADJUSTMENT)
STATE PLANE COORDINATES
NOBLES COUNTY DATUM

N= 145240.127
E= 557231.882

BOOK: 110 PG. 41

I:\NOBLS\CERTIFICATES\2005\CAD\E22-102-41

Statement of evidence relative to this corner location is on back of page.

I hereby certify that this document and the data contained herein was prepared by me or under my direct supervision.

Janele Fowlds 4-24-06
JANELE FOWLDS DATE

Registration No. 26748

- Land surveyor, Professional Engineer
- County Surveyor, County Engineer

OFFICE OF THE COUNTY RECORDER

County of _____

I hereby certify that this document was filed in the Co. Recorders office at ____M. on the _____ day of _____ A.D., 19__

County Recorder _____

By _____, Deputy

DOCUMENT NO. _____

Statement of Evidence

East Quarter Corner Section 22, Township 102 North, Range 41 West

Original Notes

- 1916 Nobles County Highway Department records show a stone monument being set.
- 1980 Nobles County Highway Department records show a stone monument being placed, has the following ties:
Nail & Disk in Power Pole – Northeast 50.72'
Nail & Disk in Cor FE Post – West 36.08'
Nail & Disk in FE Ent Post – North-Northwest 172.60'
- 2003 On July 14, Bolton & Menk, Inc., Mankato, found a 5/8" rerod 0.6 foot below surface.

The evidence is not conclusive as to the true corner location, however the occupational and collateral evidence suggest that this is a reasonable location as to the corner. Additional information regarding the preparation of this certificate can be obtained by contacting: Bolton & Menk, Inc., Mankato, MN.