

CERTIFICATE OF LOCATION OF GOVERNMENT CORNER

EAST QUARTER Corner of Section 23, Township 102 N, Range 41 W, 5th P.M.

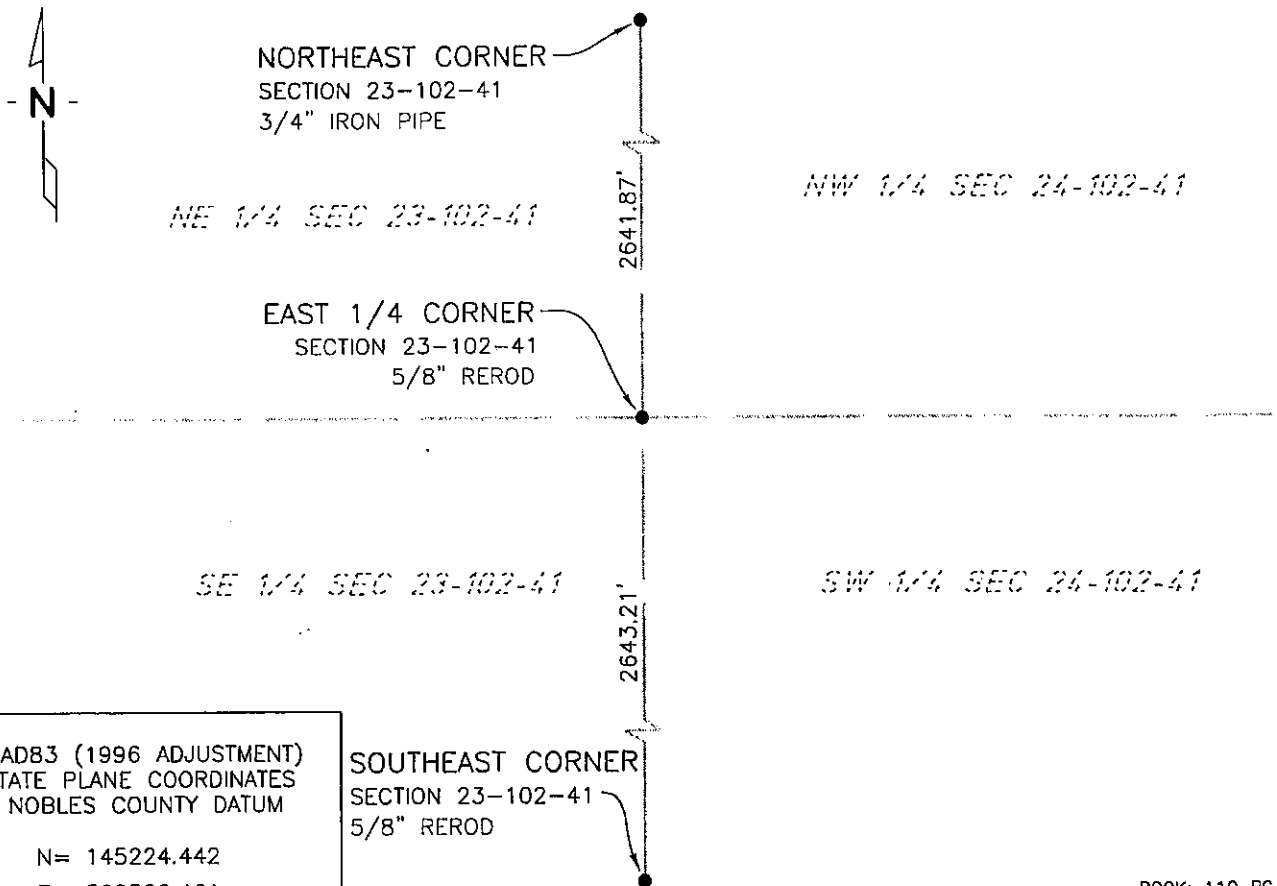
STATE OF MINNESOTA, County of NOBLES

At the corner location shown on the sketch:

- On 7/14/03 found a 5/8" REROD
DATE

- left monument as found, lowered monument, removed monument (explain)
- On _____ placed a _____
DATE

SKETCH OF REFERENCE TIES



NAD83 (1996 ADJUSTMENT)
STATE PLANE COORDINATES
NOBLES COUNTY DATUM

N= 145224.442
E= 562522.461

BOOK: 110 PG. 42
I:\NOBLS\CERTIFICATES\2005\CAD\E23-102-41

Statement of evidence relative to this corner location is on back of page.

I hereby certify that this document and the data contained herein was prepared by me or under my direct supervision.

Janele Fowlds 4-24-06
JANELE FOWLDS DATE

Registration No. 26748

Land surveyor, Professional Engineer

County Surveyor, County Engineer

OFFICE OF THE COUNTY RECORDER
County of _____

I hereby certify that this document was filed in the Co. Recorders office at ____M. on the _____ day of _____ A.D., 19__

County Recorder _____
By _____, Deputy
DOCUMENT NO. _____

Statement of Evidence

East Quarter Corner Section 23, Township 102 North, Range 41 West

Original Notes

- 1914 Nobles County Highway Department records show a stone monument being set.
- 1916 Nobles County Highway Department records show a stone monument.
- 1930 Nobles County Highway Department records show an iron pin.
- 1964 Nobles County Highway Department records show a reestablished iron pin.
- 1971 Nobles County Highway Department records show an iron pipe that was established as corner.
- 1991 Nobles County Highway Department records show a 5/8" x 12" rebar being placed.
- 1992 Nobles County Highway Department records show a 5/8" x 4" rebar being placed in new bit, has the following ties:
Nail & Disk in Power Pole – Southeast 84.9'
"X" in CL Pipe – East 36.3'
"X" on CL Pipe – West 38.6'
- 2003 On July 15, Bolton & Menk, Inc., Mankato, found a 5/8" rerod at the surface of a county road.