

# CERTIFICATE OF LOCATION OF GOVERNMENT CORNER

NORTH QUARTER Corner of Section 14, Township 102 N, Range 41 W, 5th P.M.  
STATE OF MINNESOTA, County of NOBLES

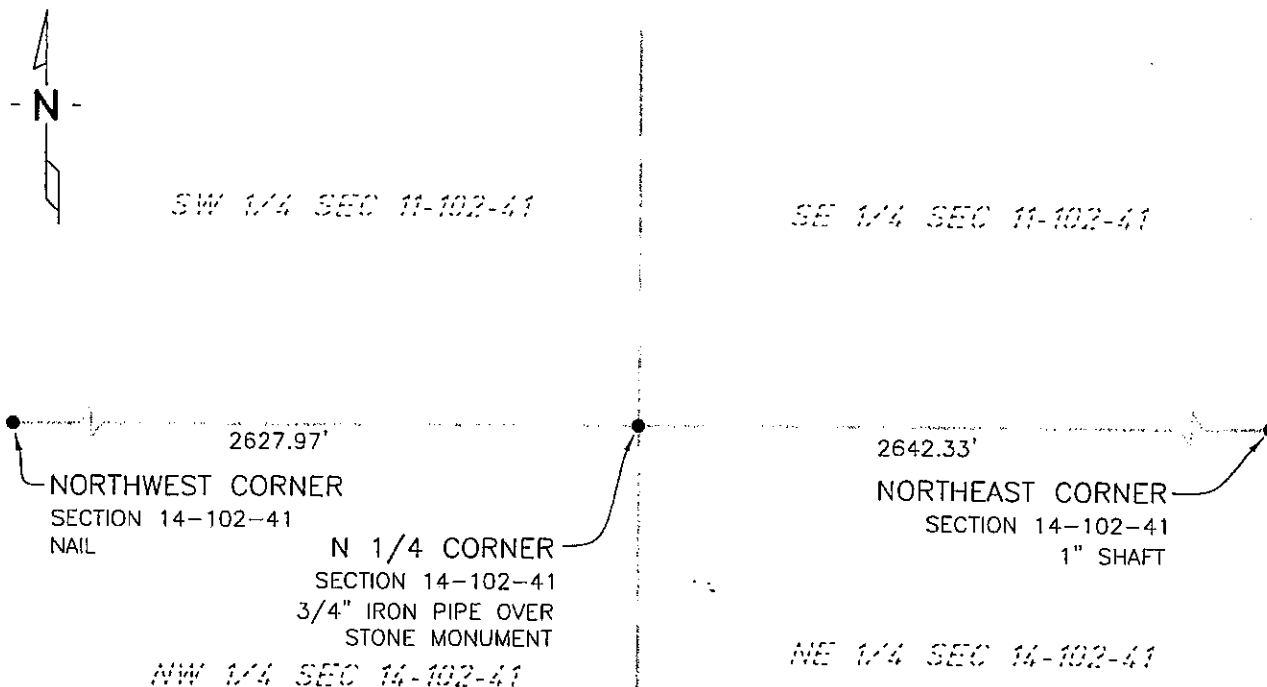
At the corner location shown on the sketch:

☒ On 7/14/03 found a 3/4" IRON PIPE OVER STONE MONUMENT  
DATE

☒ left monument as found, ☐ lowered monument, ☐ removed monument (explain)

☐ On \_\_\_\_\_ placed a \_\_\_\_\_  
DATE

## SKETCH OF REFERENCE TIES



NAD83 (1996 ADJUSTMENT)  
STATE PLANE COORDINATES  
NOBLES COUNTY DATUM

N= 153193.779

E= 559876.303

BOOK: 110 PG. 42

I:\NOBLES\CERTIFICATES\2005\CAD\N14-102-41

Statement of evidence relative to this corner location is on back of page.

I hereby certify that this document and the data contained herein was prepared by me or under my direct supervision.

Janele Fowlds  
JANELE FOWLDS

4-24-06  
DATE

Registration No. 26748

☒ Land surveyor, ☐ Professional Engineer

☐ County Surveyor, ☐ County Engineer

## OFFICE OF THE COUNTY RECORDER

County of \_\_\_\_\_

I hereby certify that this document was filed in the Co. Recorders office at \_\_\_\_M. on the \_\_\_\_\_ day of \_\_\_\_\_ A.D., 19\_\_\_\_

County Recorder \_\_\_\_\_

By \_\_\_\_\_, Deputy

DOCUMENT NO. \_\_\_\_\_

## Statement of Evidence

North Quarter Corner Section 14, Township 102 North, Range 41 West

### Original Notes

- 1896 Nobles County Highway Department records show a stone.
- 1959 Nobles County Highway Department records show a stone, and placed an iron pin with the following ties:  
Gate Post – Northeast 35.25'  
Cor Post – Southwest 32.40'  
FE Post – Southeast 60.29'
- 2003 On July 14, Bolton & Menk, Inc., Mankato, found a 3/4" iron pipe over a stone.
- The evidence is not conclusive as to the true corner location, however the occupational and collateral evidence suggest that this is a reasonable location as to the corner. Additional information regarding the preparation of this certificate can be obtained by contacting: Bolton & Menk, Inc.; Mankato, MN.