

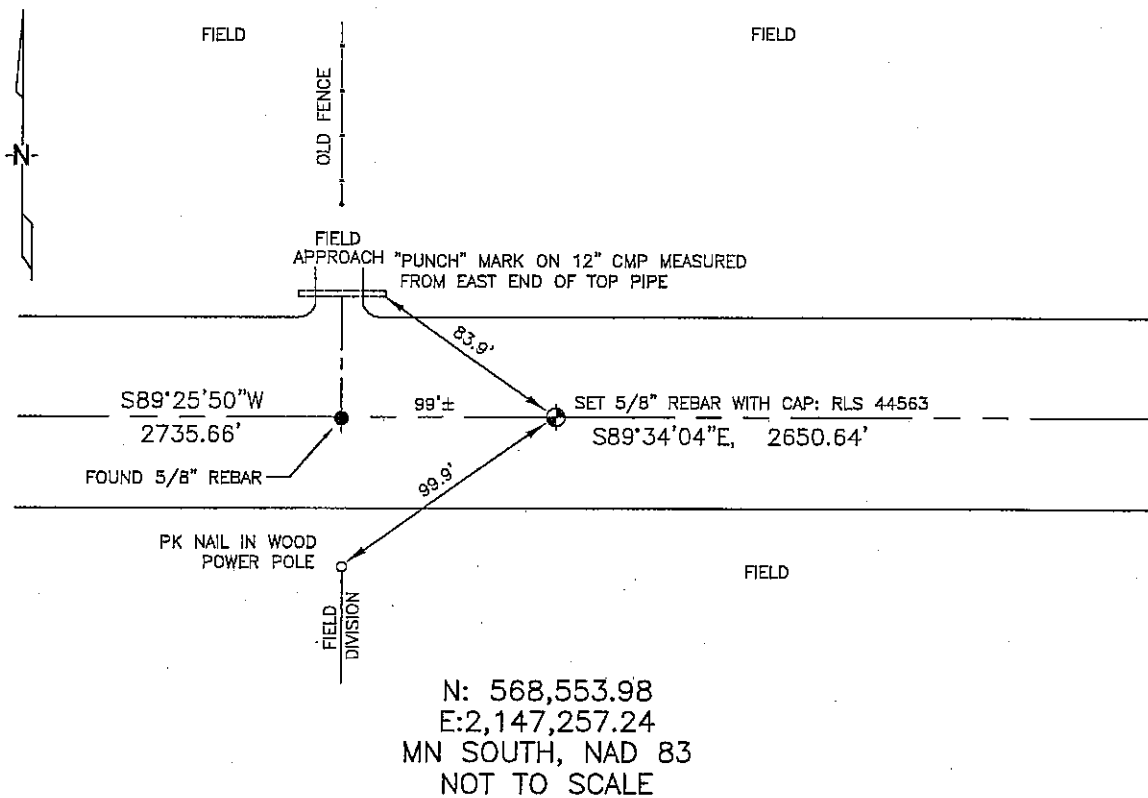
CERTIFICATE OF LOCATION OF GOVERNMENT CORNER

NORTH 1/4 Corner of Section 18, Township 102N, Range 41W, 5th P.M.
 STATE OF MINNESOTA, County of NOBLES

At the corner location shown on the sketch:


- On 3/08/2006 found a 5/8" REBAR 99'+/- WEST OF PROPORTION
DATE BETWEEN NE & NW CORNERS OF SECTION 18.
- left monument as found, lowered monument, removed monument (explain)
- On 3/08/2006 placed a 5/8" REBAR WITH CAP: RLS 44563.
DATE

SKETCH OF REFERENCE TIES



Statement of evidence relative to this corner location is on back of page.

I hereby certify that this document and the data contained herein was prepared by me or under my direct supervision.


 _____ 8/11/06
 Thomas V. Zeff DATE

Registration No. 44563

- Land Surveyor, Professional Engineer
- County Surveyor, County Engineer

OFFICE OF THE COUNTY RECORDER

County of _____

I hereby certify that this document was filed in the Co. Recorders office at _____ .M. on the _____ day of _____ A.D., 20____

County Recorder _____

By _____, Deputy

DOCUMENT NO. _____

STATEMENT OF EVIDENCE:

 N 1/4 CORNER, SECTION 18 , T. 102 N., R. 41 W.,
 NOBLES COUNTY, MINNESOTA

1868 JEWETT & HOWE, US. Deputy Surveyors, monumented corner.

3/08/2006 Ulteig Engineers, Inc., Survey Crew, Dennis Lavallie Party Chief, found
a 5/8" rebar 99'± west of proportion between NE & NW corners.
Set a 5/8" rebar with cap: RLS 44563 at the proportional distance.
Ties: NW-83.9' to east end of a 12" cmp, punch mark on top of
 pipe;
 E-2650.64' to NE corner, Section 18;
 SW-99.9' to pk nail in wood power pole, up 36", NE side;
 W-2735.66' to NW corner, Section 18.