

CERTIFICATE OF LOCATION OF GOVERNMENT CORNER

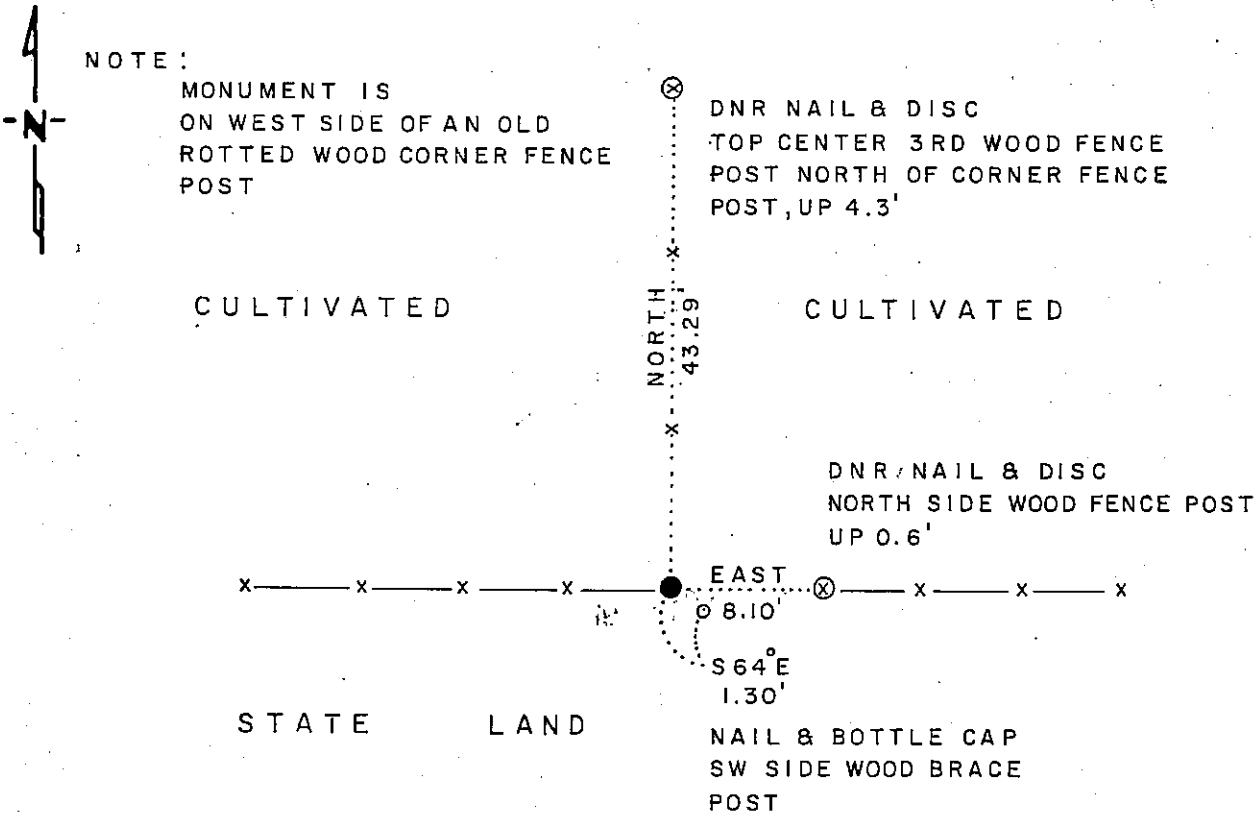
NORTH QUARTER Corner of Section 12, Township 102 N, Range 41 W, 5th P.M.

STATE OF MINNESOTA, County of NOBLES

At the corner location shown on the sketch

- On 8-9-88 found a 6" x 5" x 15" GRANITE STONE WITH "X" ON TOP,
DATE DOWN 0.8'
- left monument as found, lowered monument, removed monument (explain)
- On 8-9-88 placed a 3/4" x 24" IRON ROD, FLUSH, ON NORTH SIDE
DATE OF STONE

SKETCH OF REFERENCE TIES



BEARINGS OBSERVED WITH COMPASS

Statement of evidence relative to this corner location is on back of page

J.B.M. 8-26-88
6-965

I hereby certify that this document and the data contained herein was prepared by me or under my direct supervision.

Lowell R. Pomeroy 9-20-88
SIGNATURE DATE

Registration No. 17005

- Land Surveyor, Professional Engineer
- County Surveyor, County Engineer

OFFICE OF THE COUNTY RECORDER
County of Nobles

I hereby certify that this document was filed in the Co. Recorders office at 4:45 P. M. on the 21st day of September A.D., 1988

County Recorder James Howard

By _____, Deputy

DOCUMENT NO. 234945

North Quarter Corner Section 12, Township 102 North, Range 41 West

The DNR Bureau of Engineering contacted the following offices for survey information on this corner:

MN Secretary of State
 Nobles County Recorder and Highway Engineer
 Mn/DOT at Windom
 Martin Land Surveying at Worthington
 Rieke-Carroll-Muller

- 1868 The U.S. General Land Office notes in the Secretary of State's Office show the corner is a post, set in a mound with pits.
- 1895 Surveyor's Record Book A-2, on page 198, obtained from the County Recorder's Office, contains a survey by Milton S. Smith, County Surveyor. Survey shows the original post is gone a long time, being plowed up. Set a stone at this corner 40.00 chains from the northeast corner Section 11.
- 1914 Surveyor's Record Book B, on page 56, obtained from the County Recorder's Office, contains a survey by William Saxon, County Surveyor. Survey shows a distance of 2662 ft. from this corner to the northeast corner Section 12. No mention of a monument is made.
- 1970 January, the DNR Bureau of Engineering traversed to the area of the corner and located a fence corner, with fences north-south and east-west. Fence corner was used for this corner which measures 2663.70 ft. from the northeast corner of Section 12.
- 1972 June 22, the DNR Bureau of Engineering traversed to the area of the corner and found a stone with an x on top down 0.5 ft. Stone is on the west side of the corner fence post found in 1970. Stone was found to measure:
 2640.02 ft. from the northeast corner Section 11
 2664.90 ft. from the northeast corner Section 12
- 1978 August, the DNR Bureau of Engineering conducted a search for this corner and found the stone as described in 1972. Stone measures:
 2639.78 ft. from the northeast corner Section 11
 2664.04 ft. from the northeast corner Section 12

Analysis of the available information led the DNR Bureau of Engineering to conclude that the found stone marks the location of the corner.

- 1988 August, the DNR Bureau of Engineering revisited the corner and found the stone as previously located, in good condition. Set a 3/4" by 24" iron rod on its north side.