

# CERTIFICATE OF LOCATION OF GOVERNMENT CORNER

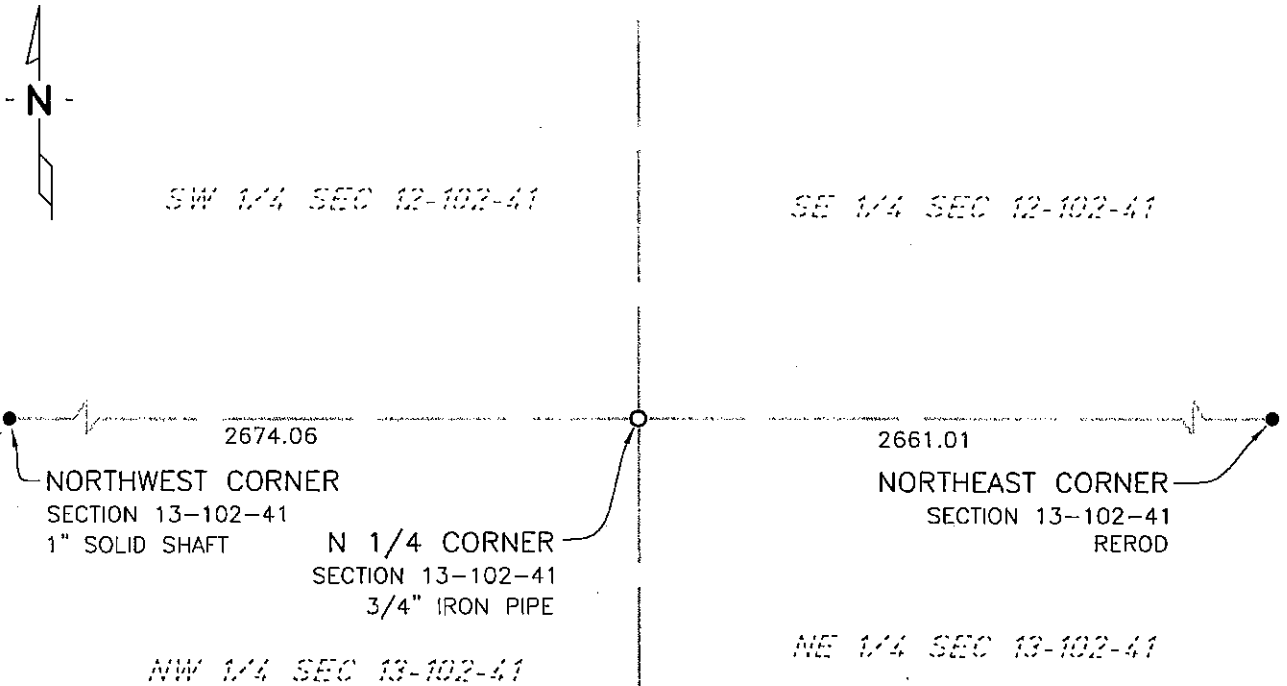
NORTH QUARTER Corner of Section 13, Township 102 N, Range 41 W, 5th P.M.

STATE OF MINNESOTA, County of NOBLES

At the corner location shown on the sketch:

- On 7/14/03 found a NOTHING  
DATE
- left monument as found,  lowered monument,  removed monument (explain)
- On 2/27/05 placed a 3/4" IRON PIPE MONUMENT  
DATE

## SKETCH OF REFERENCE TIES



NAD83 (1996 ADJUSTMENT)  
STATE PLANE COORDINATES  
NOBLES COUNTY DATUM

N= 153178.767  
E= 565192.504

BOOK: 110 PG. 42  
I:\NOBLS\CERTIFICATES\2005\CAD\N13-102-41

Statement of evidence relative to this corner location is on back of page.

I hereby certify that this document and the data contained herein was prepared by me or under my direct supervision.

Janele Fowlds 4-24-06  
JANELE FOWLDS DATE

Registration No. 26748

- Land surveyor,  Professional Engineer
- County Surveyor,  County Engineer

## OFFICE OF THE COUNTY RECORDER

County of \_\_\_\_\_

I hereby certify that this document was filed in the Co. Recorders office at \_\_\_\_M. on the \_\_\_\_\_ day of \_\_\_\_\_ A.D., 19\_\_

County Recorder \_\_\_\_\_

By \_\_\_\_\_, Deputy

DOCUMENT NO. \_\_\_\_\_

## Statement of Evidence

### North Quarter Corner Section 13, Township 102 North, Range 41 West

- 1868 The U.S. General Land Office notes in the Secretary of State's Office show the corner is a post, set in a mound with pits.
- No Date Surveyor's Record Book A-1, on page 42, obtained from the County Recorder's Office, contains a survey, surveyor not indicated. Survey shows this corner is marked by a post with mound and pits. Corner measures:  
41.80 chains from the northeast corner Section 14  
39.66 chains from the northeast corner Section 13  
40.00 chains from the center of Section 12
- 1963 A Field Book of ties and monuments of government corners, obtained from the County Highway Engineer, shows an iron pin at this corner.
- 1972 June, the DNR Bureau of Engineering traversed to the area of the corner and found an iron pipe down 0.6 ft. Iron is on the centerline of an east-west road in line with a fence south. Iron measures: 2661.07 ft. from the northeast corner Section 13 2680.00 ft. from the northeast corner Section 14
- 1978 February, Mn/DOT found a 1" iron rod, down 0.1 ft., on centerline east-west road approximately in line with a fence line south.
- 1978 August, the DNR Bureau of Engineering conducted a search for this corner and found a 1/2" iron rod with a cast iron cap down 0.1 ft. Iron is at the intersection of a east-west road and fence line south, over the west edge of a culvert.  
Iron measures:  
2674.03 ft. from the northeast corner Section 14  
2660.98 ft. from the northeast corner Section 13
- Analysis of the available information led the DNR Bureau of Engineering to conclude that the found iron rod marks the location of the corner. Using a proportion based on the old survey, the corner would be 63.55 east of the found iron. Since the found iron agrees with occupation, it marks the most likely position of the corner.
- 1988 August, the DNR Bureau of Engineering revisited the corner and found the iron rod as previously located, in good condition. Set a DNR Survey Marked over it.
- 2003 On July 14, Bolton & Menk, Inc., Mankato, searched for evidence of a corner but found nothing.
- 2006 On February 27, Bolton & Menk, Inc., Fairmont set a 3/4" x 18" iron pipe monument, at the calculated position from a previous DNR certificate.