

CERTIFICATE OF LOCATION OF GOVERNMENT CORNER

NORTH QUARTER Corner of Section 17, Township 102 N, Range 41 W, 5th P.M.
STATE OF MINNESOTA, County of NOBLES

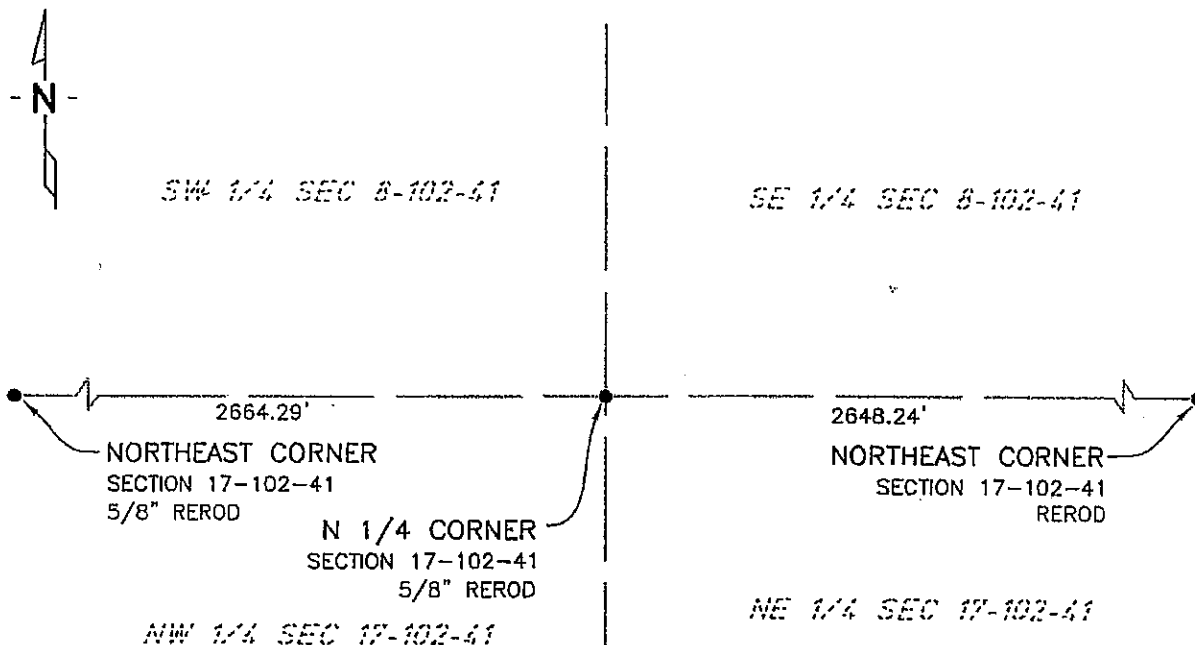
At the corner location shown on the sketch:

☒ On 7/14/03 found a REROD
DATE

☒ left monument as found, ☐ lowered monument, ☐ removed monument (explain)

☐ On _____ placed a _____
DATE

SKETCH OF REFERENCE TIES



NAD83 (1996 ADJUSTMENT)
STATE PLANE COORDINATES
NOBLES COUNTY DATUM

N= 153011.006

E= 544062.027

BOOK: 110 PG. 41

L:\NOBLS\CERTIFICATES\2005\CAD\N17-102-41

Statement of evidence relative to this corner location is on back of page.

I hereby certify that this document and the data contained herein was prepared by me or under my direct supervision.

Janele Fowlds
JANELE FOWLDS

4-24-06
DATE

Registration No. 26748

☒ Land surveyor, ☐ Professional Engineer

☐ County Surveyor, ☐ County Engineer

OFFICE OF THE COUNTY RECORDER

County of _____

I hereby certify that this document was filed in the Co. Recorders office at _____ M. on the _____ day of _____ A.D., 19____

County Recorder _____

By _____, Deputy

DOCUMENT NO. _____

Statement of Evidence

North Quarter Corner Section 17, Township 102 North, Range 41 West

Original Notes

- 1897 Nobles County Highway Department records show a stone monument.
- 1959 Nobles County Highway Department records show a stone monument and also placed an iron pin with the following ties:
Tree – Northwest 51.96'
Tree – Southwest 48.78'
Tree – Southeast 36.95'
- 2003 On July 14, Bolton & Menk, Inc., Mankato, found a rerod 0.2 foot below surface.
- The evidence is not conclusive as to the true corner location, however the occupational and collateral evidence suggest that this is a reasonable location as to the corner. Additional information regarding the preparation of this certificate can be obtained by contacting: Bolton & Menk, Inc., Mankato, MN.