

CERTIFICATE OF LOCATION OF GOVERNMENT CORNER

NORTH QUARTER Corner of Section 21, Township 102 N, Range 41 W, 5th P.M.

STATE OF MINNESOTA, County of NOBLES

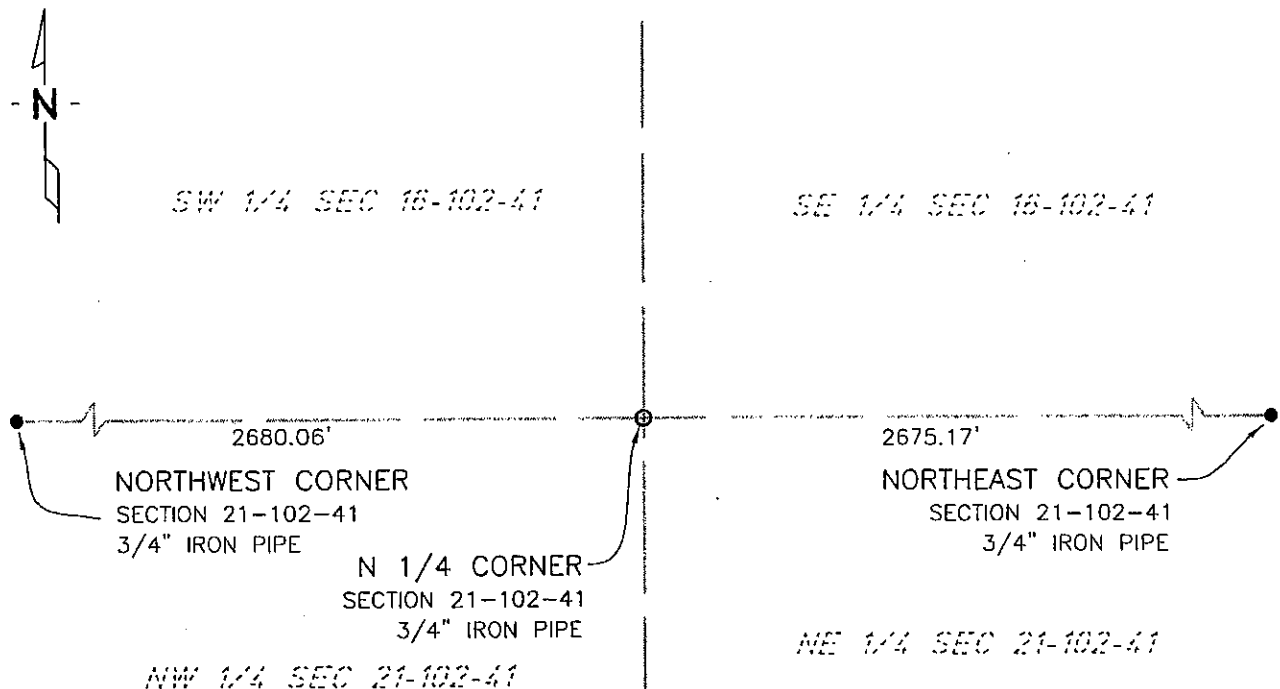
At the corner location shown on the sketch:

☒ On 7/14/03 found a 5/8" REROD
DATE

☒ left monument as found, ☐ lowered monument, ☐ removed monument (explain)

☒ On 1/25/06 placed a 3/4" X 18" IRON PIPE MONUMENT
DATE

SKETCH OF REFERENCE TIES



NAD83 (1996 ADJUSTMENT)
STATE PLANE COORDINATES
NOBLES COUNTY DATUM

N= 147750.484

E= 549313.067

BOOK: 110 PG. 41

I:\NOBLES\CERTIFICATES\N21-102-41

Statement of evidence relative to this corner location is on back of page.

I hereby certify that this document and the data contained herein was prepared by me or under my direct supervision.

Janele Fowlds
JANELE FOWLDS

4-24-06
DATE

Registration No. 26748

☒ Land surveyor, ☐ Professional Engineer

☐ County Surveyor, ☐ County Engineer

OFFICE OF THE COUNTY RECORDER

County of _____

I hereby certify that this document was filed in the Co. Recorders office at ____M. on the _____ day of _____ A.D., 19____

County Recorder _____

By _____, Deputy

DOCUMENT NO. _____

Statement of Evidence

North Quarter Corner Section 21, Township 102 North, Range 41 West

Original Notes

- 1959 Nobles County Highway Department records show a hole in concrete established as corner with the following ties:
2.5' North of CL of T.H. 16
Top UGTCM – Southeast 71.12'
Nail & Disk in Tree – Northeast 67.80'
- 1980 A survey, by Martin Land Surveying, Worthington, shows a survey monument in place, but no description of monument available.
- 1992 Nobles County Highway Department records show 5/8"x4" rebar placed just below surface on February 25.
- 1999 A survey, by Madsen Land Surveying Inc., Fairmont, shows a 5/8" iron rod found in bituminous paving 2" deep with the following ties:
Bottle Cap in Wood Post – South-Southwest 54.22'
Tel Ped – Southeast 71.14'
Steel Cor FE Post – North 47.25'
CL Highway – South 2.65'
- 2003 On July 14, Bolton & Menk, Inc., Mankato, found a 5/8" rerod 0.1 foot below surface of county road.
- 2006 On January 25, Bolton & Menk, Inc. Fairmont, placed a 3/4" x 18 iron pipe monument which is 1 foot north of the centerline of C.S.A.H. 35, 10 feet east of a row of hedges to the south, and 20 west of the east line of a grove to the north. The iron pipe was placed at the previously located 5/8" rerod. The monument was lost due to highway reconstruction.