

# CERTIFICATE OF LOCATION OF GOVERNMENT CORNER

NORTH QUARTER Corner of Section 22, Township 102 N, Range 41 W, 5th P.M.

STATE OF MINNESOTA, County of NOBLES

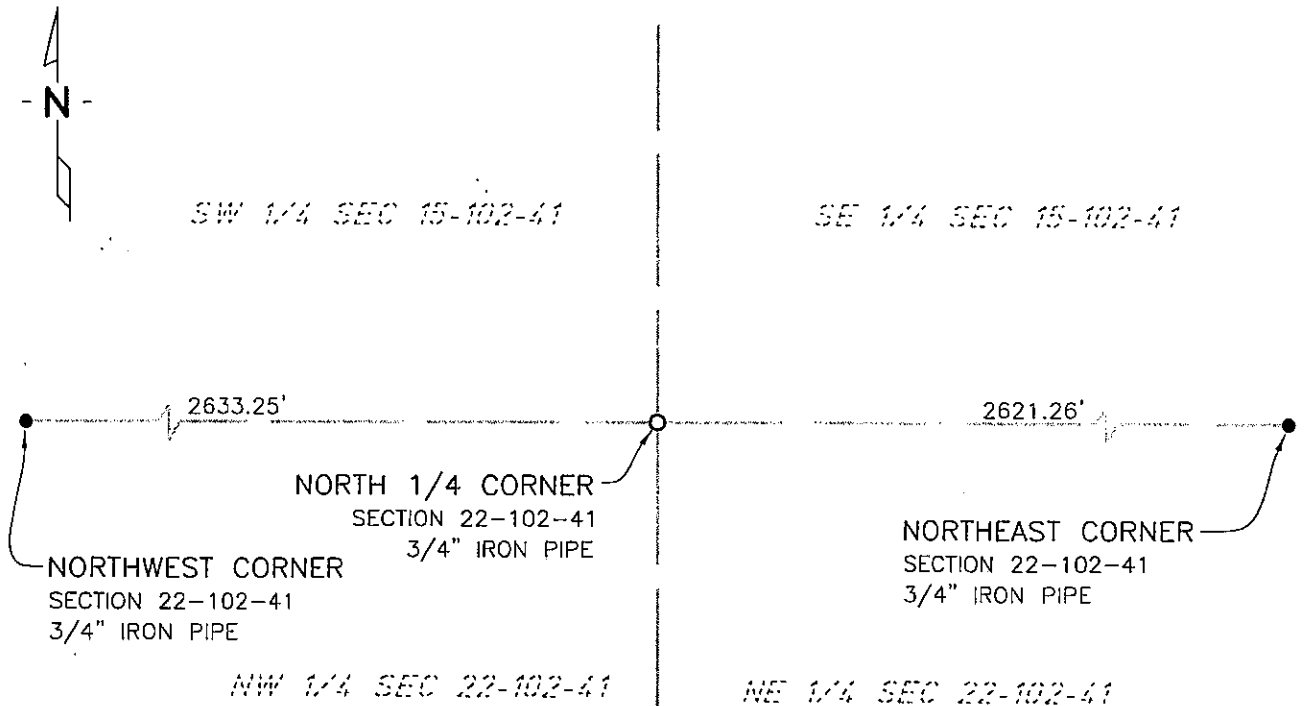
At the corner location shown on the sketch:

On 7/14/03 found a 5/8" REROD  
DATE

left monument as found,  lowered monument,  removed monument (explain)

On 1/25/06 placed a 3/4" X 18" IRON PIPE MONUMENT  
DATE

### SKETCH OF REFERENCE TIES



NAD83 (1996 ADJUSTMENT)  
 STATE PLANE COORDINATES  
 NOBLES COUNTY DATUM

N= 147850.642  
 E= 554620.108

BOOK: 110 PG. 41  
 I:\NOBLES\CERTIFICATES\2005\CAD\N22-102-41

Statement of evidence relative to this corner location is on back of page.

I hereby certify that this document and the data contained herein was prepared by me or under my direct supervision.

Janele Fowlds 4-24-06  
JANELE FOWLDS DATE

Registration No. 26748

Land surveyor,  Professional Engineer  
 County Surveyor,  County Engineer

OFFICE OF THE COUNTY RECORDER  
 County of \_\_\_\_\_

I hereby certify that this document was filed in the Co. Recorders office at \_\_\_\_M. on the \_\_\_\_\_ day of \_\_\_\_\_ A.D., 19\_\_

County Recorder \_\_\_\_\_  
 By \_\_\_\_\_, Deputy  
 DOCUMENT NO. \_\_\_\_\_

Statement of Evidence

North Quarter Corner Section 22, Township 102 North, Range 41 West

Original Notes

- 1978 A Martin Land Surveying, Worthington, survey shows a concrete nail and R.L.S. tag being set as per MN/DOT R/W monuments. The nail is 0.4 foot north of the CL of highway.
- 1978 Nobles County Highway Department records show a concrete nail with brass tag.
- No Date Nobles County Highway Department records show a found nail, 2<sup>nd</sup> lift down, may or may not be it. Concrete was busted up and no ties were found. Found a sliver of iron next to concrete, but could not positively identify that this was the corner. Set a 5/8"x4" rebar, this is an assumed position.
- 2003 On July 14, Bolton & Menk, Inc., Mankato, found a 5/8" rerod at the surface of the county road.
- 2006 On January 25, Bolton & Menk, Inc., Fairmont, placed a 3/4" x 18" iron pipe monument at the centerline of C.S.A.H. 35, and on the east side of some honeysuckle hedges. Iron pipe monument was set at the location of the previously found 5/8" rerod. Rerod was lost due to road construction.