

CERTIFICATE OF LOCATION OF GOVERNMENT CORNER

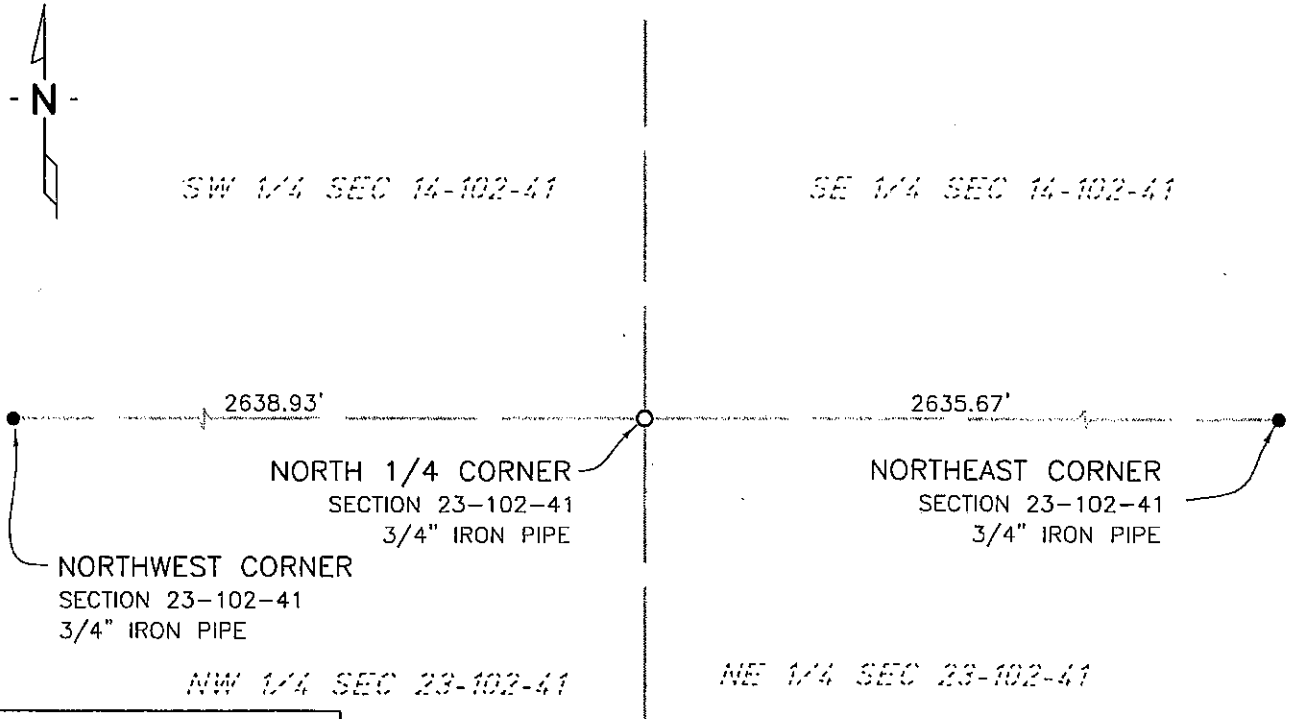
NORTH QUARTER Corner of Section 23, Township 102 N, Range 41 W, 5th P.M.

STATE OF MINNESOTA, County of NOBLES

At the corner location shown on the sketch:

- On 7/14/03 found a 5/8" REROD
DATE
- left monument as found, lowered monument, removed monument (explain)
- On 1/25/06 placed a 3/4" X 18" IRON PIPE MONUMENT
DATE

SKETCH OF REFERENCE TIES



NAD83 (1996 ADJUSTMENT)
STATE PLANE COORDINATES
NOBLES COUNTY DATUM

N= 147910.927
E= 559879.124

BOOK: 110 PG. 41
I:\NOBLS\CERTIFICATES\2005\CAD\N23-102-41

Statement of evidence relative to this corner location is on back of page.

I hereby certify that this document and the data contained herein was prepared by me or under my direct supervision.

Janele Fowlds 4-24-06
JANELE FOWLDS DATE

Registration No. 26748

Land surveyor, Professional Engineer
 County Surveyor, County Engineer

OFFICE OF THE COUNTY RECORDER
County of _____

I hereby certify that this document was filed in the Co. Recorders office at ____M. on the _____ day of _____ A.D., 19____

County Recorder _____
By _____, Deputy

DOCUMENT NO. _____

Statement of Evidence

North Quarter Corner Section 23, Township 102 North, Range 41 West

Original Notes

- 1916 Nobles County Highway Department records show a stone monument being set.
- 1917 Nobles County Highway Department records show a stone monument.
- 1960 Nobles County Highway Department records show an "X" in concrete established as corner.
- 1973 Nobles County Highway Department records show an iron pin.
- 1992 Nobles County Highway Department records show a 5/8"x4" rebar being placed on March 26.
- 1996 Nobles County Highway Department records show a 5/8" rod.
- 1996 A Bell Surveying Inc., Worthington, survey shows a found 5/8" rod at the surface of County Road 35.
- 2003 On July 15, Bolton & Menk, Inc., Mankato, found a 5/8" rered 0.2 foot below surface of county road.
- 2006 On January 25, Bolton & Menk, Inc., Fairmont, set a 3/4" x 18" iron pipe monument, which is 1 foot north of centerline of C.S.A.H. 35 and 1 foot west of fence line to the north and south. The iron pipe monument was set in the location of the previously found 5/8" rered. The rered was lost due to road construction.