

CERTIFICATE OF LOCATION OF GOVERNMENT CORNER

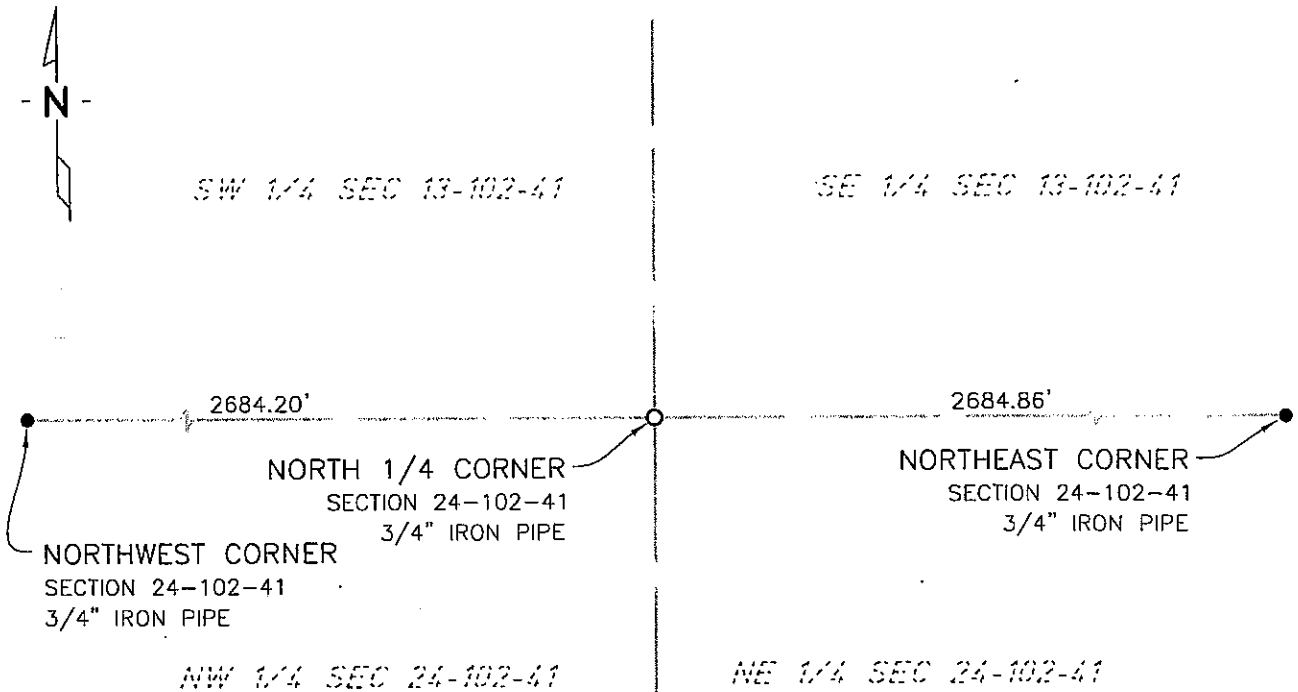
NORTH QUARTER Corner of Section 24, Township 102 N, Range 41 W, 5th P.M.

STATE OF MINNESOTA, County of NOBLES

At the corner location shown on the sketch:

- On 7/15/03 found a REROD
DATE
- left monument as found, lowered monument, removed monument (explain)
- On 1/25/06 placed a 3/4" X 18" IRON PIPE MONUMENT
DATE

SKETCH OF REFERENCE TIES



NAD83 (1996 ADJUSTMENT)
STATE PLANE COORDINATES
NOBLES COUNTY DATUM

N= 147848.498
E= 565198.558

BOOK: 110 PG. 42

E:\NOBLES\CERTIFICATES\2005\CAD\N24-102-41

Statement of evidence relative to this corner location is on back of page.

I hereby certify that this document and the data contained herein was prepared by me or under my direct supervision.

Janele Fowlds 4-24-06
JANELE FOWLDS DATE

Registration No. 26748

- Land surveyor, Professional Engineer
- County Surveyor, County Engineer

OFFICE OF THE COUNTY RECORDER

County of _____

I hereby certify that this document was filed in the Co. Recorders office at ____M. on the _____ day of _____ A.D., 19__

County Recorder _____

By _____, Deputy

DOCUMENT NO. _____

Statement of Evidence

North Quarter Corner Section 24, Township 102 North, Range 41 West

Original Notes

- 1914 Nobles County Highway Department records show a stone monument being set.
- 1917 Nobles County Highway Department records show a stone monument.
- 1963 Nobles County Highway Department records show an iron pin.
- 1973 Nobles County Highway Department records show an iron pin with the following ties:
Top R/W Marker Pipe – North 51.42’
Nail & Disk in Cor FE Post Top – South-Southeast 49.70’
Top Steel Fence Post – 55.25’ (No direction)
- 2003 On July 15, Bolton & Menk, Inc., Mankato, found a rerod at the surface of a county road.
- 2006 On January 25, Bolton & Menk, Inc., Fairmont, set a ¾” x 18” iron pipe monument, that is 0.8 feet south of centerline of C.S.A.H. 35, fence line north is on line, and fence line to the south is 4 feet east. The iron pipe monument was set in the location of the previously found rerod. The rerod was lost due to road construction.