

# CERTIFICATE OF LOCATION OF GOVERNMENT CORNER

NORTH QUARTER Corner of Section 29, Township 102 N, Range 41 W, 5th P.M.  
 STATE OF MINNESOTA, County of NOBLES

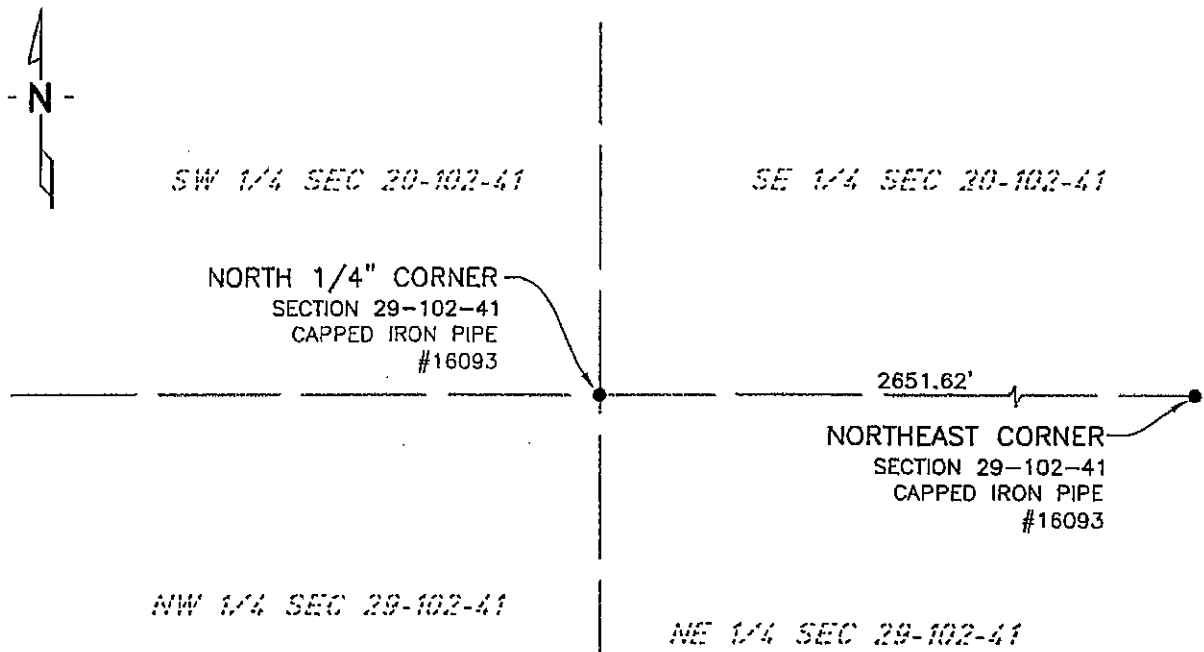
At the corner location shown on the sketch:

On 7/14/03 found a CAPPED IRON PIPE #16093  
DATE

left monument as found,  lowered monument,  removed monument (explain)

On \_\_\_\_\_ placed a \_\_\_\_\_  
DATE

### SKETCH OF REFERENCE TIES



NAD83 (1996 ADJUSTMENT)  
 STATE PLANE COORDINATES  
 NOBLES COUNTY DATUM

N= 142400.129  
 E= 543963.624

BOOK: 110 PG. 41  
 I:\NOBLS\CERTIFICATES\2005\CAD\N29-102-41

Statement of evidence relative to this corner location is on back of page.

I hereby certify that this document and the data contained herein was prepared by me or under my direct supervision.

Janele FowlDS 4-24-06  
JANELE FOWLDS DATE

Registration No. 26748

Land surveyor,  Professional Engineer  
 County Surveyor,  County Engineer

OFFICE OF THE COUNTY RECORDER

County of \_\_\_\_\_

I hereby certify that this document was filed in the Co. Recorders office at \_\_\_\_\_ M. on the \_\_\_\_\_ day of \_\_\_\_\_ A.D., 19\_\_\_\_

County Recorder \_\_\_\_\_

By \_\_\_\_\_, Deputy

DOCUMENT NO. \_\_\_\_\_

Statement of Evidence

North Quarter Corner Section 29, Township 102 North, Range 40 West

Original Notes

- 1892 Nobles County Highway Department records show a stone monument being set.
- 1933 Nobles County Highway Department records show a stone monument.
- 2003 On July 16, Bolton & Menk, Inc., Mankato, found a 5/8" rerod 0.2 foot below surface.

The evidence is not conclusive as to the true corner location, however the occupational and collateral evidence suggest that this is a reasonable location as to the corner. Additional information regarding the preparation of this certificate can be obtained by contacting: Bolton & Menk, Inc., Mankato, MN.