

CERTIFICATE OF LOCATION OF GOVERNMENT CORNER

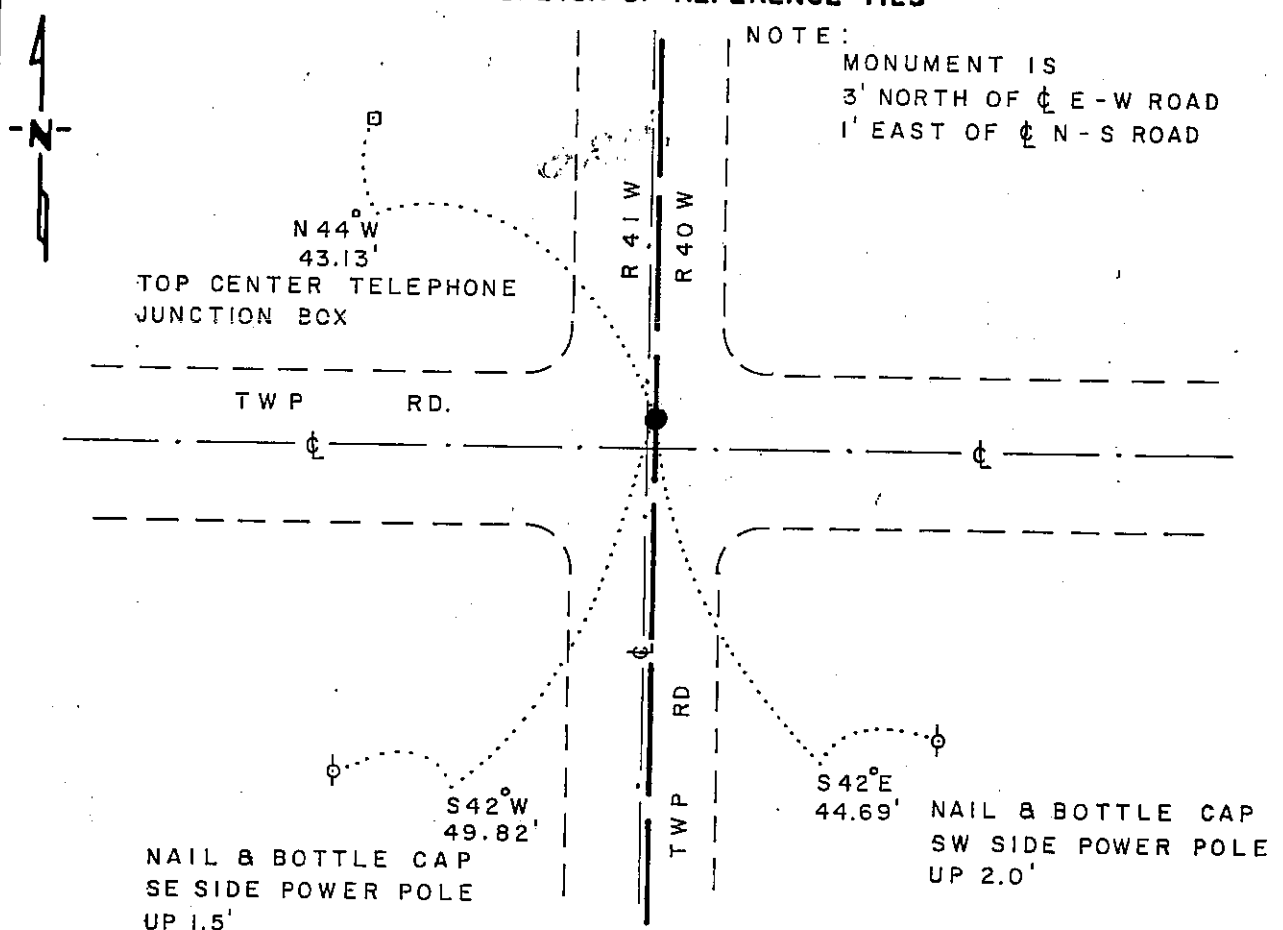
NORTHEAST Corner of Section 1, Township 102 N, Range 41 W, 5th P.M.

STATE OF MINNESOTA, County of NOBLES

At the corner location shown on the sketch

- On 11-7-78 found a 3/4" x 15" PINCHED IRON PIPE, DOWN 0.60', OVER
A 3" x 8" x 6" GRANITE STONE, DOWN 2.0'
 left monument as found, lowered monument, removed monument (explain)
- On 8-9-88 placed a 1 1/4" x 1 1/4" x 20" PERFORATED STEEL TUBE WITH
ALUMINUM CAP STAMPED "DNR SURVEY MARKER", DOWN 0.3', OVER PIPE

SKETCH OF REFERENCE TIES



BEARINGS OBSERVED WITH COMPASS

Statement of evidence relative to this corner location is on back of page

J.B.M. 8-17-88
G-965

I hereby certify that this document and the data contained herein was prepared by me or under my direct supervision.

Lowell R. Foxmeyer, Jr. 9-20-88
SIGNATURE DATE

Registration No. 17005
 Land Surveyor, Professional Engineer
 County Surveyor, County Engineer

OFFICE OF THE COUNTY RECORDER
County of Nobles

I hereby certify that this document was filed in the Co. Recorders office at 4:20 P. M. on the 21st day of September A.D., 1988

County Recorder Jays Howard
By _____, Deputy

DOCUMENT NO. 234940

Northeast Corner Section 1, Township 102 North, Range 41 West

The DNR Bureau of Engineering contacted the following offices for survey information on this corner:

MN Secretary of State
Nobles County Recorder and Highway Engineer
Mn/DOT at Windom
Martin Land Surveying at Worthington
Rieke-Carroll-Muller

- 1867 The U.S. General Land Office notes in the Secretary of State's Office show the corner is a post, set in a mound with pits.
- No Date Surveyor's Record Book A-1, on page 23, obtained from the County Recorder's Office, contains a survey, surveyor not indicated. Survey shows a distance of 40.16 chains from this corner to the north quarter corner Section 6. No mention of a monument is made.
- 1893 Surveyor's Record Book A-2, on page 138, obtained from the County Recorder's Office, contains a survey by Milton S. Smith, County Surveyor. Survey shows this corner as the township stone monument in mound being OK. Corner measures 2644 ft. from the east quarter corner Section 1.
- 1895 Surveyor's Record Book A-2, on page 198, obtained from the County Recorder's Office, contains a survey by Milton S. Smith, County Surveyor. Survey shows township monument at this corner, which measures 2644 ft. from the east quarter corner Section 1.
- 1914 Surveyor's Record Book B, on page 56, obtained from the County Recorder's Office, contains a survey by William Saxon, County Surveyor. Survey shows a township corner monument at this corner, which measures 2643 ft. from the east quarter corner Section 1.
- 1964 A Field Book of ties and monuments of government corners, obtained from the County Highway Engineer, shows a stone at this corner. Placed a wood stake and took three reference ties.
- 1965 June, the DNR Bureau of Engineering traversed to the area of the corner and found a stone monument. Placed an iron pipe over the stone and set a spike in the center of the pipe. Three reference ties are shown.
- 1965 A Field Book of ties and monuments of government corners, obtained from the County Highway Engineer, shows an iron pin at the corner.
- 1970 A Field Book of ties and monuments of government corners, obtained from the County Highway Engineer, shows the reference ties as taken in 1964.
- 1978 November, the DNR Bureau of Engineering conducted a search for this corner and found a 3/4" by 15" pinched pipe with nail in top down 0.30 ft. over a granite stone down 2.0 ft. Granite stone is prismatic in shape and was found lying on its side. Reset stone upright with pinched pipe and found it to be:
- 1.8 ft. east of centerline north-south road
 - 3.0 ft. north of centerline east-west road
 - 2641.09 ft. from the east quarter corner Section 1
- Analysis of the available information led the DNR Bureau of Engineering to conclude that the pinched pipe and stone mark the location of the corner.
- 1988 August, the DNR Bureau of Engineering revisited the corner and found the iron pipe as previously located in good condition. Placed a DNR Survey Marker over the iron pipe.