

# CERTIFICATE OF LOCATION OF GOVERNMENT CORNER

NORTHEAST Corner of Section 11, Township 102 N, Range 41 W, 5th P.M.

STATE OF MINNESOTA, County of NOBLES

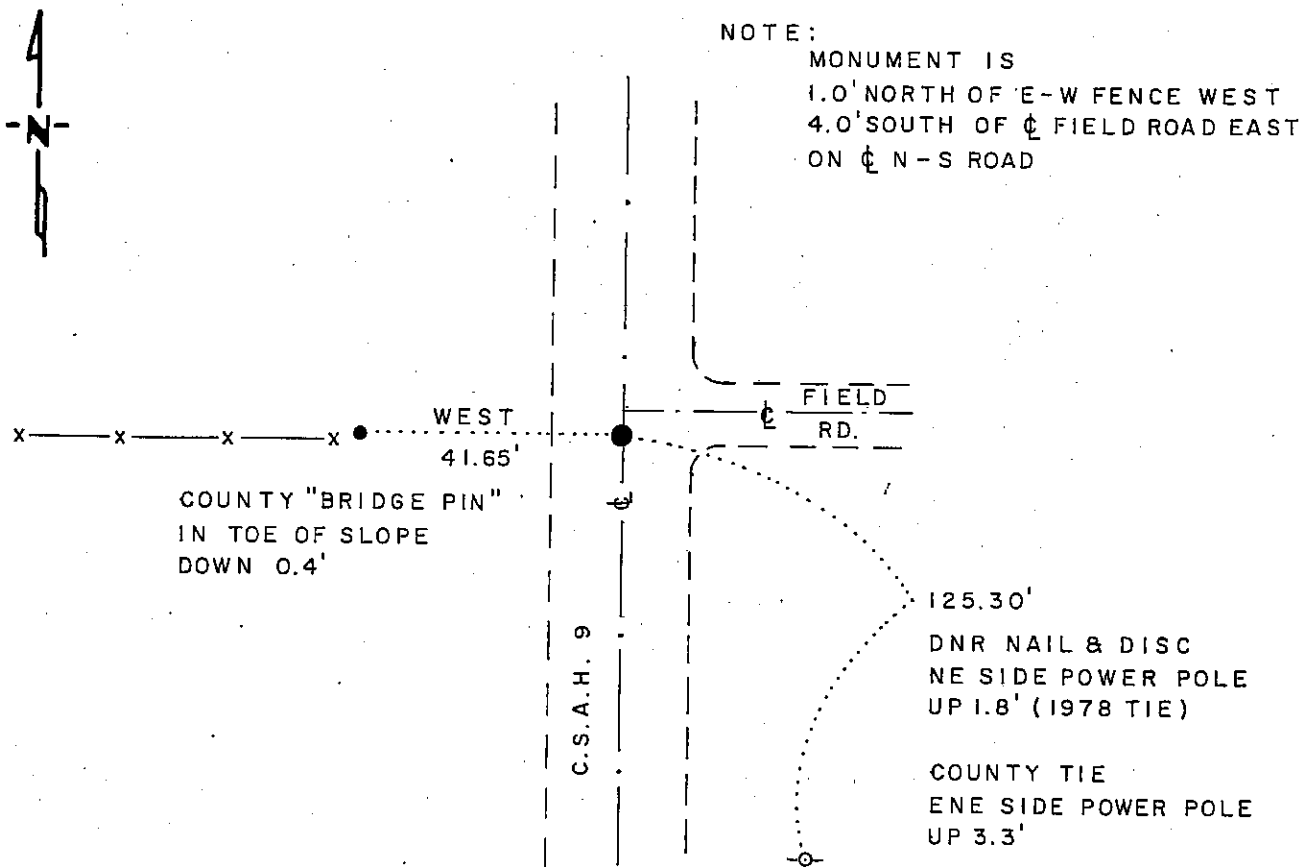
At the corner location shown on the sketch

On 9-7-78 found a 3/8" x 12" SPIKE, DOWN 0.2'  
DATE

left monument as found,  lowered monument,  removed monument (explain)

On 8-9-88 placed a 1 1/4" x 1 1/4" x 20" PERFORATED STEEL TUBE WITH  
DATE  
ALUMINUM CAP STAMPED "DNR SURVEY MARKER". FLUSH

### SKETCH OF REFERENCE TIES



NOTE:  
MONUMENT IS  
1.0' NORTH OF E-W FENCE WEST  
4.0' SOUTH OF  $\phi$  FIELD ROAD EAST  
ON  $\phi$  N-S ROAD

### BEARINGS OBSERVED WITH COMPASS

Statement of evidence relative to this corner location is on back of page

J.B.M. 8-25-88  
G-965

I hereby certify that this document and the data contained herein was prepared by me or under my direct supervision.

Lowell R. Power 9-20-88  
SIGNATURE DATE

Registration No. 17005

Land Surveyor,  Professional Engineer

County Surveyor,  County Engineer

OFFICE OF THE COUNTY RECORDER  
County of Nobles

I hereby certify that this document was filed in the Co. Recorders office at 4:30 P. M. on the 21st day of September A.D., 1988

County Recorder James Howard

By \_\_\_\_\_, Deputy

DOCUMENT NO. 234942

Northeast Corner Section 11, Township 102 North, Range 41 West

The DNR Bureau of Engineering contacted the following offices for survey information on this corner:

MN Secretary of State  
Nobles County Recorder and Highway Engineer  
Mn/DOT at Windom  
Martin Land Surveying at Worthington  
Rieke-Carroll-Muller

- 1868 The U.S. General Land Office notes in the Secretary of State's Office show the corner is a post, set in a mound with pits.
- 1895 Surveyor's Record Book A-2, on page 198, obtained from the County Recorder's Office, contains a survey by Milton S. Smith, County Surveyor. Survey shows original stake in mound and pits at this corner. Corner measures 40.00 chains from the north quarter corner Section 12.
- 1896 Surveyor's Record Book A-2, on page 242, obtained from the County Recorder's Office, contains a survey by Milton S. Smith, County Surveyor. Survey shows this corner, but does not describe it.
- 1923 A Field Book of ties to government corners along State Road #14, obtained from the County Highway Engineer, shows this corner as a stone with three reference ties. From stationing, a distance of 2655.3 ft. is shown from this corner to the east quarter corner Section 11.
- 1963 A Field Book of ties to government corners along C.S.A.H. 9, obtained from the County Highway Engineer, shows this corner as a found stone down 0.7 ft.. Raised with a 2 by 2 and took three reference ties.
- 1964 A Field Book of ties and monuments of government corners, obtained from the County Highway Engineer, shows that in 1963 a stone was found and an iron pin was placed. Now an iron pin was found and four reference ties are shown.
- 1972 June 20, the DNR Bureau of Engineering traversed to the area of the corner and found an iron pipe down 0.3 of a foot at the intersection of a north-south road and fence lines east and west. Corner was located from County Highway Department ties. Corner measures:  
2653.80 ft. from the east quarter corner Section 11  
2640.02 ft. from the north quarter corner Section 12
- 1978 August 21, the DNR Bureau of Engineering hired a backhoe to dig for evidence of this corner. Dug at the intersection of a north-south road and fence lines east and west. Found a 3/8" by 12" spike, down 0.2 at this intersection. Dug down to a depth of 4 ft. below the spike, but found nothing. The top of the road is below natural ground, indicating a cut area at this corner. Reset spike and found it to measure:  
2653.48 ft. from the east quarter corner Section 11  
2639.78 ft. from the north quarter corner Section 12

Analysis of the available information led the DNR Bureau of Engineering to conclude that the found spike marks the location of the corner.

- 1988 August, the DNR Bureau of Engineering revisited the corner and found that county road improvements have destroyed many of the 1978 ties. Went to the County Highway Engineer's office and obtained a field book of ties to government corners. Book of ties shows that in 1985 an iron pin was found down 5", being the same iron pin found in 1964. New reference ties were taken in 1986. The County Highway Engineer said they documented what they found and took ties, setting a 1/2" iron rod at the corner after highway construction. The DNR Bureau of Engineering was NOT given permission to dig in the pavement to confirm what the County had set. Used the County ties and received a metal attraction at their intersection. Set a DNR Survey Marker at this location. It is believed that the 3/8" by 12" spike is one in the same with the Counties found iron rod, which the DNR Bureau of Engineering contends is the location of the corner.

Fract M.S. Compared N  
Photo M.S.  
Fee R