

# CERTIFICATE OF LOCATION OF GOVERNMENT CORNER

NORTHEAST Corner of Section 12, Township 102 N, Range 41 W, 5th P.M.

STATE OF MINNESOTA, County of NOBLES

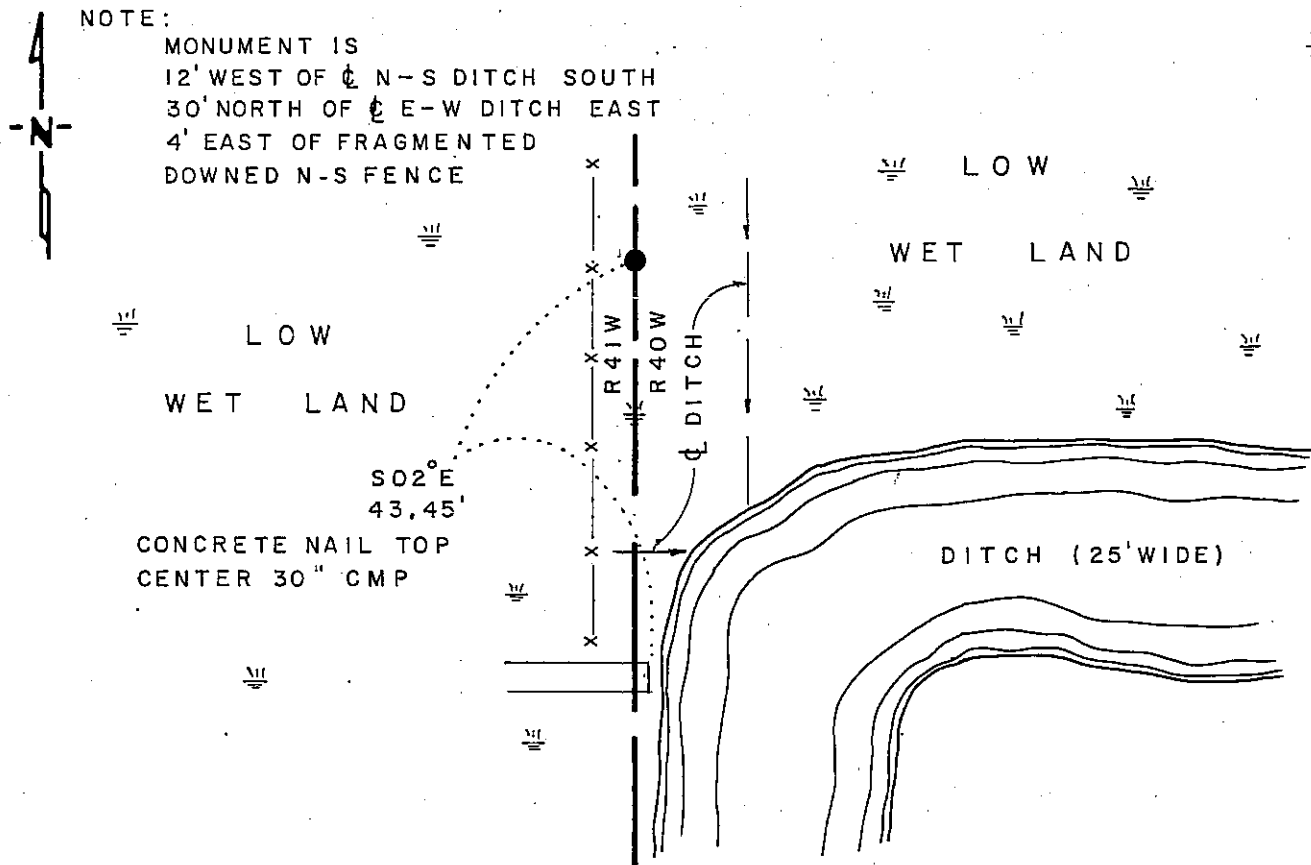
At the corner location shown on the sketch

- On \_\_\_\_\_ found a \_\_\_\_\_  
DATE
- left monument as found,  lowered monument,  removed monument (explain)
- On 8-10-88 placed a 1 1/2" x 47" GALVANIZED IRON PIPE, UP 1.0'  
DATE

## SKETCH OF REFERENCE TIES

NOTE:

MONUMENT IS  
 12' WEST OF  $\perp$  N-S DITCH SOUTH  
 30' NORTH OF  $\perp$  E-W DITCH EAST  
 4' EAST OF FRAGMENTED  
 DOWNED N-S FENCE



BEARING OBSERVED WITH COMPASS

Statement of evidence relative to this corner location is on back of page

J.B.M. 8-24-88  
G-965

I hereby certify that this document and the data contained herein was prepared by me or under my direct supervision.

Rowell R. Pommeroy 9-20-88  
SIGNATURE DATE

Registration No. 17005

- Land Surveyor,  Professional Engineer
- County Surveyor,  County Engineer

OFFICE OF THE COUNTY RECORDER  
County of Nobles

I hereby certify that this document was filed in the Co. Recorders office at 4:40 P. M. on the 21st day of September A.D., 1988

County Recorder James Howard

By \_\_\_\_\_, Deputy

DOCUMENT NO. 234944

The DNR Bureau of Engineering contacted the following offices for survey information on this corner:

MN Secretary of State  
Nobles County Recorder and Highway Engineer  
Mn/DOT at Windom  
Martin Land Surveying at Worthington  
Rieke-Carroll-Muller

- 1867 The U.S. General Land Office notes in the Secretary of State's Office show the corner is in a small pond with a witness corner set 12.41 chains north. Witness corner is marked with a post set in a mound.
- 1895 Surveyor's Record Book A-2, on page 198, obtained from the County Recorder's Office, contains a survey by Milton S. Smith, County Surveyor. Survey shows the witness corner 12.41 chains north is gone. Corner area is swamp with reeds 10 ft. high. Did not set section corner.
- 1914 Surveyor's Record Book B, on page 56, obtained from the County Recorder's Office, contains a survey by William Saxon, County Surveyor. Survey shows a gas pipe at this corner, which measures:  
2640 ft. from the east quarter corner Section 1  
2639 ft. from the east quarter corner Section 12  
2662 ft. from the north quarter corner Section 12  
2620 ft. from the north quarter corner Section 7
- 1965 June, the DNR Bureau of Engineering traversed to the area of the corner and found no evidence of it. Mr. Herlein, area landowner, stated that the east-west ditch in the area is on the section line. He got his information from his father. The fence and field lines indicate this corner may be just to the north of the ditch. Established a position for the corner on a north-south line between the east quarter corner of Section 1 and the northeast corner Section 13, no monument was set. Corner measures:  
5260.8 ft. from the northeast corner Section 7  
5243.5 ft. from the northeast corner Section 13
- 1970 January, the DNR Bureau of Engineering traversed to the area of the corner and found no evidence of it. Established this corner on line between the east quarter corner of Section 1 and northeast corner of Section 13, at the intersection of an azimuth from the 1965 survey from the northeast corner of Section 7. Corner is shown to measure:  
2676.10 ft. from the east quarter corner Section 1  
2663.70 ft. from the north quarter corner Section 12  
A spike was set at this location and three reference ties are shown.
- 1972 June, the DNR Bureau of Engineering traversed to the area of the corner and found the corner area to be under five ft. of water. Measured a distance of 7920.87 ft. from the east quarter corner of section 1 to the northeast corner of Section 13, and established this corner per previous survey. Corner is shown to measure:  
2664.90 ft. from the north quarter corner Section 12  
2598.90 ft. from the east quarter corner Section 12  
5243.65 ft. from the northeast corner Section 13
- 1979 January, the DNR Bureau of Engineering conducted a search for this corner and found the 1970 ties to the corner. At the ties intersection, a metal attraction was obtained but it was down in 3½ ft. of mud and water, unable to dig it out.

Analysis of the available information led the DNR Bureau of Engineering to conclude that the methods used since 1965 do not constitute a viable position for this corner. This being the case, a position for this corner was computed using the 1914 distances proportionately between the east quarter corner Section 1 and east quarter corner Section 12. This position was found to measure:

2638.32 ft. from the east quarter corner Section 1  
2637.32 ft. from the east quarter corner Section 12  
2664.04 ft. from the north quarter corner Section 12  
2617.79 ft. from the north quarter corner Section 7

This proportional position was accepted for the corner.

- 1988 August, the DNR Bureau of Engineering revisited the corner and again searched for evidence of a monument, but found nothing. Monumented the computed position using the 1914 distances with a 1½" by 47" iron pipe.

Trace  
Photo  
see 2102