

# CERTIFICATE OF LOCATION OF GOVERNMENT CORNER

NORTHEAST Corner of Section 13, Township 102 N, Range 41 W, 5th P.M.  
STATE OF MINNESOTA, County of NOBLES

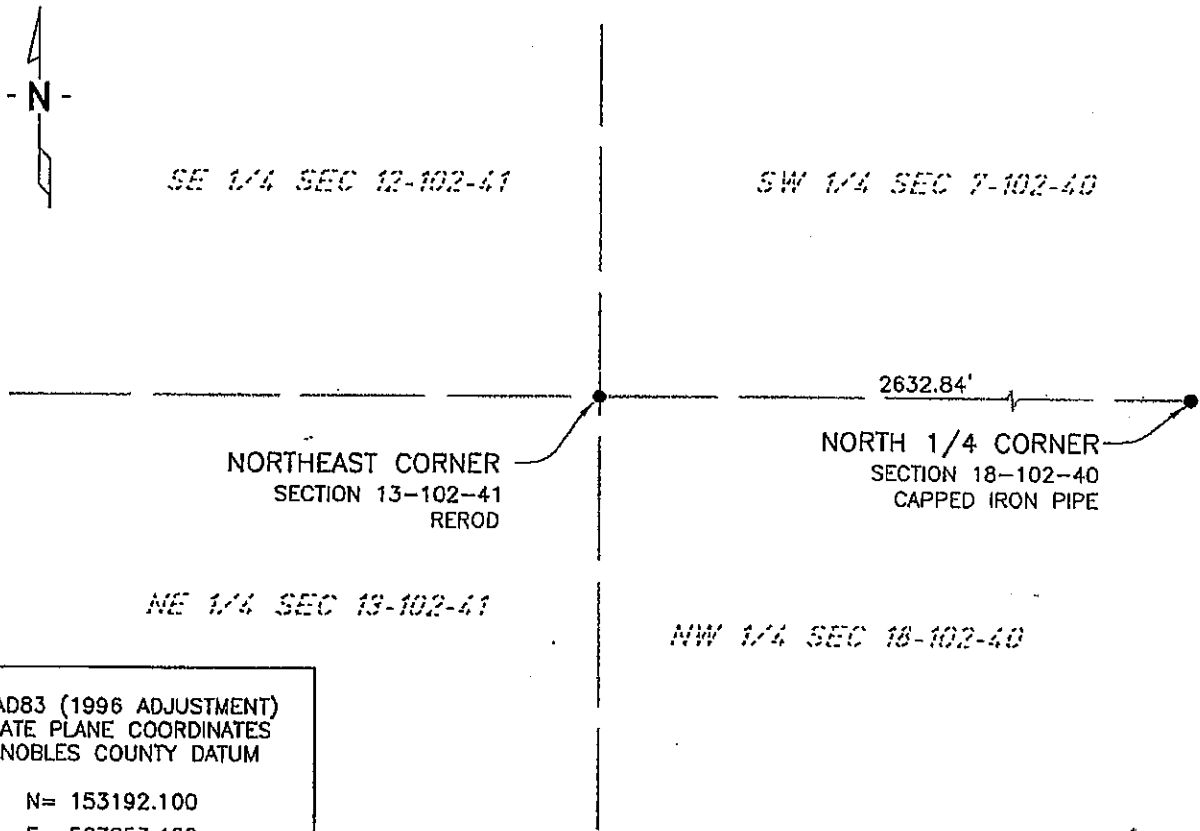
At the corner location shown on the sketch:

On 7/15/03 found a REROD  
DATE

left monument as found,  lowered monument,  removed monument (explain)

On \_\_\_\_\_ placed a \_\_\_\_\_  
DATE

### SKETCH OF REFERENCE TIES



NAD83 (1996 ADJUSTMENT)  
STATE PLANE COORDINATES  
NOBLES COUNTY DATUM

N= 153192.100  
E= 567853.480

BOOK: 110 PG. 42  
I:\NOBLES\CERTIFICATES\2005\CAD\NE13-102-41

Statement of evidence relative to this corner location is on back of page.

I hereby certify that this document and the data contained herein was prepared by me or under my direct supervision.

Janele Fowlds 4-24-06  
JANELE FOWLDS DATE

Registration No. 26748

Land surveyor,  Professional Engineer  
 County Surveyor,  County Engineer

OFFICE OF THE COUNTY RECORDER

County of \_\_\_\_\_

I hereby certify that this document was filed in the Co. Recorders office at \_\_\_\_M. on the \_\_\_\_\_ day of \_\_\_\_\_ A.D., 19\_\_

County Recorder \_\_\_\_\_

By \_\_\_\_\_, Deputy

DOCUMENT NO. \_\_\_\_\_

Statement of Evidence

Northeast Corner Section 13, Township 102 North, Range 41 West

Original survey notes

- 1914 Nobles County Highway Department records show a stone.
- 1959 Nobles County Highway Department records show a stone, and also placed an iron pin. The ties are as follows:  
FE Post – Northwest 87.00'  
FE Post – Northeast 55.55'  
FE Post – Southwest 51.32'
- 1978 The DNR Bureau of Engineering search for evidence for this corner, found a 3/8" square bolt. Also found a 3/4"x1.8 ft iron rod, over a stone monument. The DNR concluded that the bolt and other monuments are marking the corner. The evidence was recorded on September 21.
- 1988 The DNR revisited the corner; found the square iron as previously located, in good condition. Placed a DNR survey monument over the bolt.
- 2003 On July 15, Bolton & Menk, Inc., Mankato, found a rered 0.8' below the surface.
- The evidence is not conclusive as to the true corner location, however the occupational and collateral evidence suggest that this is a reasonable location as to the corner. Additional information regarding the preparation of this certificate can be obtained by contacting: Bolton & Menk, Inc., Mankato, MN.