

CERTIFICATE OF LOCATION OF GOVERNMENT CORNER

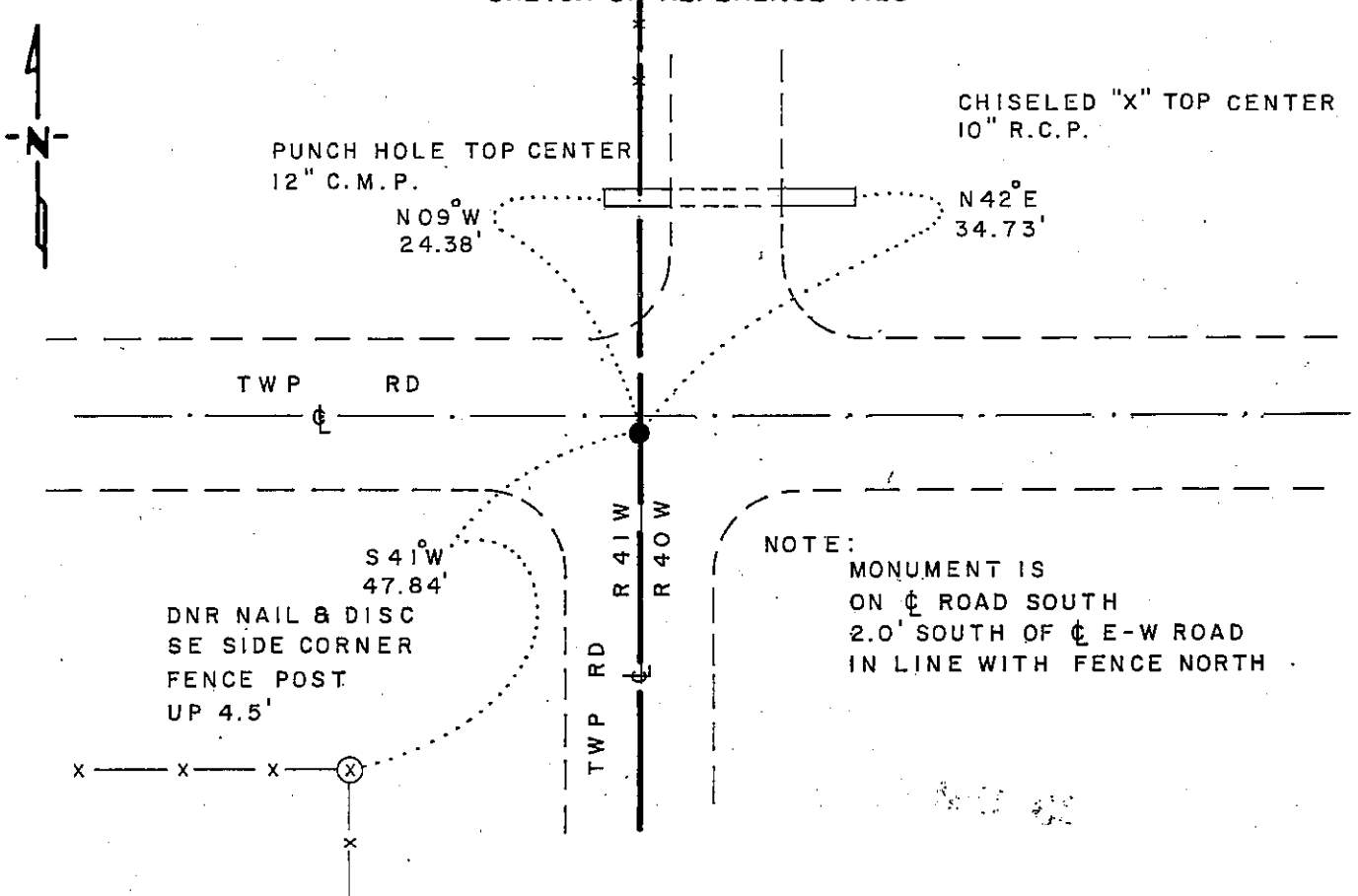
NORTHEAST Corner of Section 13, Township 102 N, Range 41 W, 5th. P.M.

STATE OF MINNESOTA, County of NOBLES

At the corner location shown on the sketch

- On 9-21-78 found a 3/8" SQUARE BOLT, DOWN 0.2', OVER A 3/4" x 1.8' IRON ROD, OVER A 1.3' x 0.5' x 0.2' FLAT CUT STONE, DOWN 2.5'
 left monument as found, lowered monument, removed monument (explain)
- On 8-8-88 placed a 1 1/4" x 1 1/4" x 20" PERFORATED STEEL TUBE WITH ALUMINUM CAP STAMPED "DNR SURVEY MARKER", DOWN 0.3', OVER BOLT

SKETCH OF REFERENCE TIES



BEARINGS OBSERVED WITH COMPASS

Statement of evidence relative to this corner location is on back of page

J.B.M. 8-22-88
6-965

I hereby certify that this document and the data contained herein was prepared by me or under my direct supervision.

Lowell R. Pomeroy 9-20-88
SIGNATURE DATE

Registration No. 17005
 Land Surveyor, Professional Engineer
 County Surveyor, County Engineer

OFFICE OF THE COUNTY RECORDER
County of Nobles

I hereby certify that this document was filed in the Co. Recorders office at 4:55 P. M. on the 21st day of September A.D., 1988

County Recorder James Howard
By _____, Deputy
DOCUMENT NO. 234947

Northeast Corner Section 13, Township 102 North, Range 41 West

The DNR Bureau of Engineering contacted the following offices for survey information on this corner:

- MN Secretary of State
- Nobles County Recorder and Highway Engineer
- Mn/DOT at Windom
- Martin Land Surveying at Worthington
- Rieke-Carroll-Muller

1867 The U.S. General Land Office notes in the Secretary of State's Office show the corner is in a small pond with a witness corner set 50 links north. Witness corner is marked with a post set in a mound.

No Date Surveyor's Record Book A-1, on page 42, obtained from the County Recorder's Office, contains a survey, surveyor not indicated. Survey shows this corner is marked by a post with mound and pits. Corner measures:
39.66 chains from the north quarter corner Section 13
39.46 chains from the east quarter corner Section 12
19.73 chains from a sixteenth corner to the north

1914 Surveyor's Record Book B, on page 56, obtained from the County Recorder's Office, contains a survey by William Saxon, County Surveyor. Survey shows a stone at this section corner. A note is made that a limestone was set in a mound in 1875 at the witness corner 2 rods north. Section corner measures 2646 ft. from the east quarter corner Section 12.

1959 A Field Book of ties and monuments of government corners, obtained from the County Highway Engineer, shows this corner as a stone. Placed an iron pin and took three reference ties.

1965 June, the DNR Bureau of Engineering traversed to the area of the corner and found an iron pipe in place down 0.4 ft. Three reference ties are shown to this corner. Corner is shown to measure 5243.5 ft. from the northeast corner Section 12.

1970 A Field Book of ties and monuments of government corners, obtained from the County Highway Engineer, shows three reference ties to this corner.

1970 January, the DNR Bureau of Engineering traversed to the area of the corner and found it as described in 1965.

1972 June, the DNR Bureau of Engineering traversed to the area of the corner and found the iron pipe as described in 1965. Iron pipe is shown to measure:
2661.07 ft. from the north quarter corner Section 13
7920.87 ft. from the east quarter corner Section 1
2644.75 ft. from the east quarter corner Section 12

1978 February, Mn/DOT found a 3/8" square headed bolt down 0.2 ft. at intersection of east-west and south roads. Searched for the witness corner, but found only a pile of rocks in the area. Searched for and found previous county ties.

1978 August, the DNR Bureau of Engineering conducted a search for this corner and found a 3/8" square bolt down 0.2 ft. Bolt is in line with the center line of a road south, in line with a fence north, and three ft. south of the center line of an east-west road. Excavated under the bolt and found a 3/4" by 1.8 ft. iron rod over a 1.3 ft. by 0.5 ft. by 0.2 ft. stone down 2.5 ft. Searched for evidence of the witness corner, and with a backhoe, found a large pointed limestone lying down, down 1.0 ft. Limestone was righted with pointed side up, being 1 ft. south of a corner fence post, and 33.26 ft. from the monuments found at the actual corner location. Actual corner measures:
2660.98 ft. from the north quarter corner Section 13
2644.72 ft. from the east quarter corner Section 12

Analysis of the available information led the DNR Bureau of Engineering to conclude that the square bolt and other monuments mark the location of the actual corner, and the limestone marking the witness corner.

1988 August, the DNR Bureau of Engineering revisited the corner and found the square bolt as previously located, in good condition. Placed a DNR Survey Marker over the bolt.

Tract Map Compared
photo
Fee