

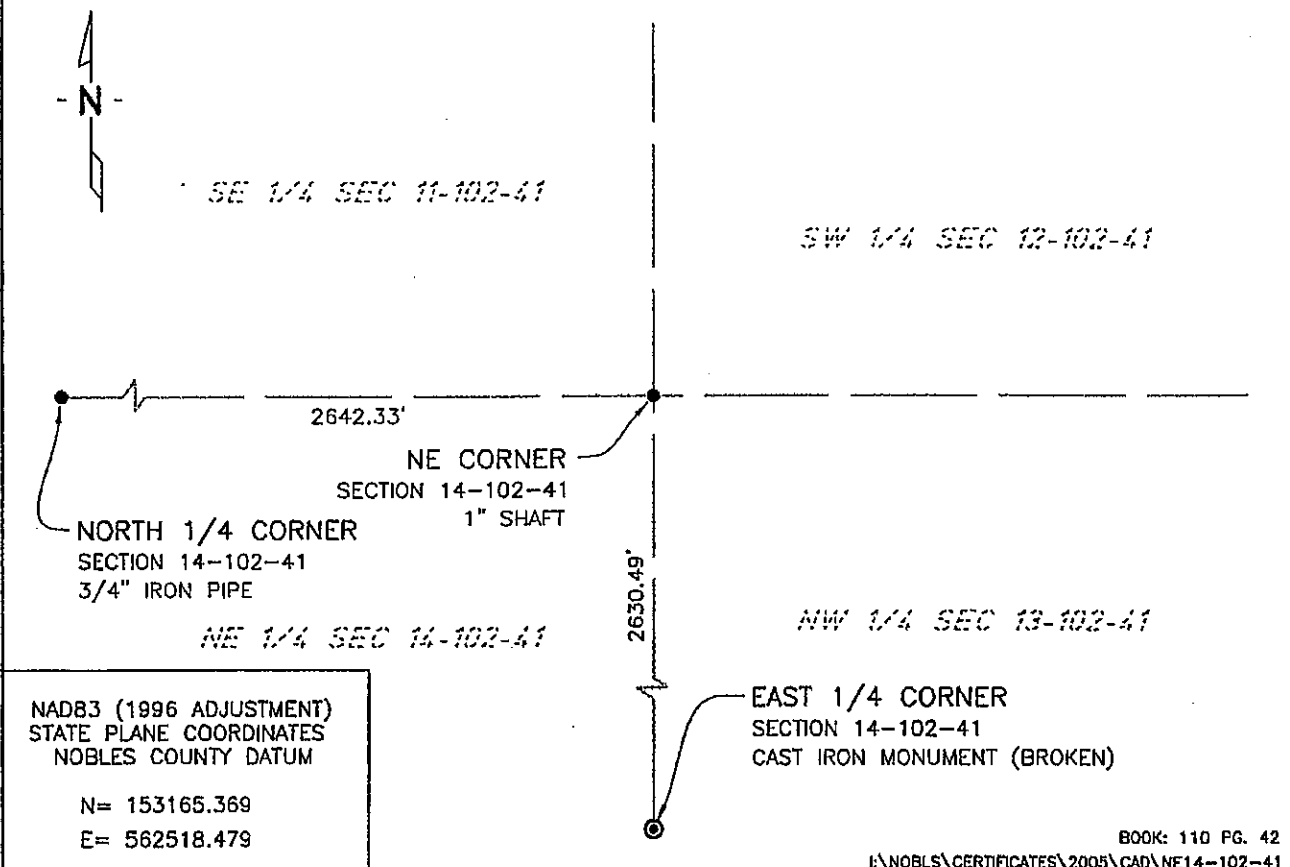
CERTIFICATE OF LOCATION OF GOVERNMENT CORNER

NORTHEAST Corner of Section 14, Township 102 N, Range 41 W, 5th P.M.
 STATE OF MINNESOTA, County of NOBLES

At the corner location shown on the sketch:

- On 7/14/03 found a 1" SOLID SHAFT
DATE
- left monument as found, lowered monument, removed monument (explain)
- On _____ placed a _____
DATE

SKETCH OF REFERENCE TIES



NAD83 (1996 ADJUSTMENT)
 STATE PLANE COORDINATES
 NOBLES COUNTY DATUM

N= 153165.369
 E= 562518.479

BOOK: 110 PG. 42
 I:\NOBLS\CERTIFICATES\2005\CAD\NE14-102-41

Statement of evidence relative to this corner location is on back of page.

I hereby certify that this document and the data contained herein was prepared by me or under my direct supervision.

Janele Fowlds 4-24-06
JANELE FOWLDS DATE

Registration No. 26748

- Land surveyor, Professional Engineer
- County Surveyor, County Engineer

OFFICE OF THE COUNTY RECORDER

County of _____

I hereby certify that this document was filed in the Co. Recorders office at _____ M. on the _____ day of _____ A.D., 19____

County Recorder _____

By _____, Deputy

DOCUMENT NO. _____

Statement of Evidence

Northeast Corner Section 14, Township 102 North, Range 41 West

Original Notes

- 1896 Nobles County Highway Department records show a stone.
- 1923 Nobles County Highway Department records show a stake.
- 1959 Nobles County Highway Department records show a stake, and also placed an iron pin.
- 1964 Nobles County Highway Department records show an iron pin.
- 1966 Nobles County Highway Department records show an iron pin.
- 1986 Nobles County Highway Department records show an iron pin with the following ties:
Nail & Disk in Power Pole – Southeast 78.86’
“X” on N. End 8’-7” Span CMP – Northeast 52.48’
- 1988 The DNR Bureau of Engineering dug with a backhoe, found a 3/8”x 12 spike over a 3/4”x21” iron rod. Also found a 0.7 ft x 0.4 ft x 1.2 ft fieldstone down 3.5 ft, with pointed end up. The stone is 5.95 feet east and 2.00 feet north of found spike. The DNR found no other evidence. They reset stone and spike as found. Concluded that stone marks the location of the corner as per 1896 survey, and placed a 1/2”x1.2 ft iron rod over it. The evidence was recorded on September 21.
- 2003 On July 14, Bolton & Menk, Inc., Mankato, found a 1” solid shaft at surface.
- The evidence is not conclusive as to the true corner location, however the occupational and collateral evidence suggest that this is a reasonable location as to the corner. Additional information regarding the preparation of this certificate can be obtained by contacting: Bolton & Menk, Inc., Mankato, MN.