

CERTIFICATE OF LOCATION OF GOVERNMENT CORNER

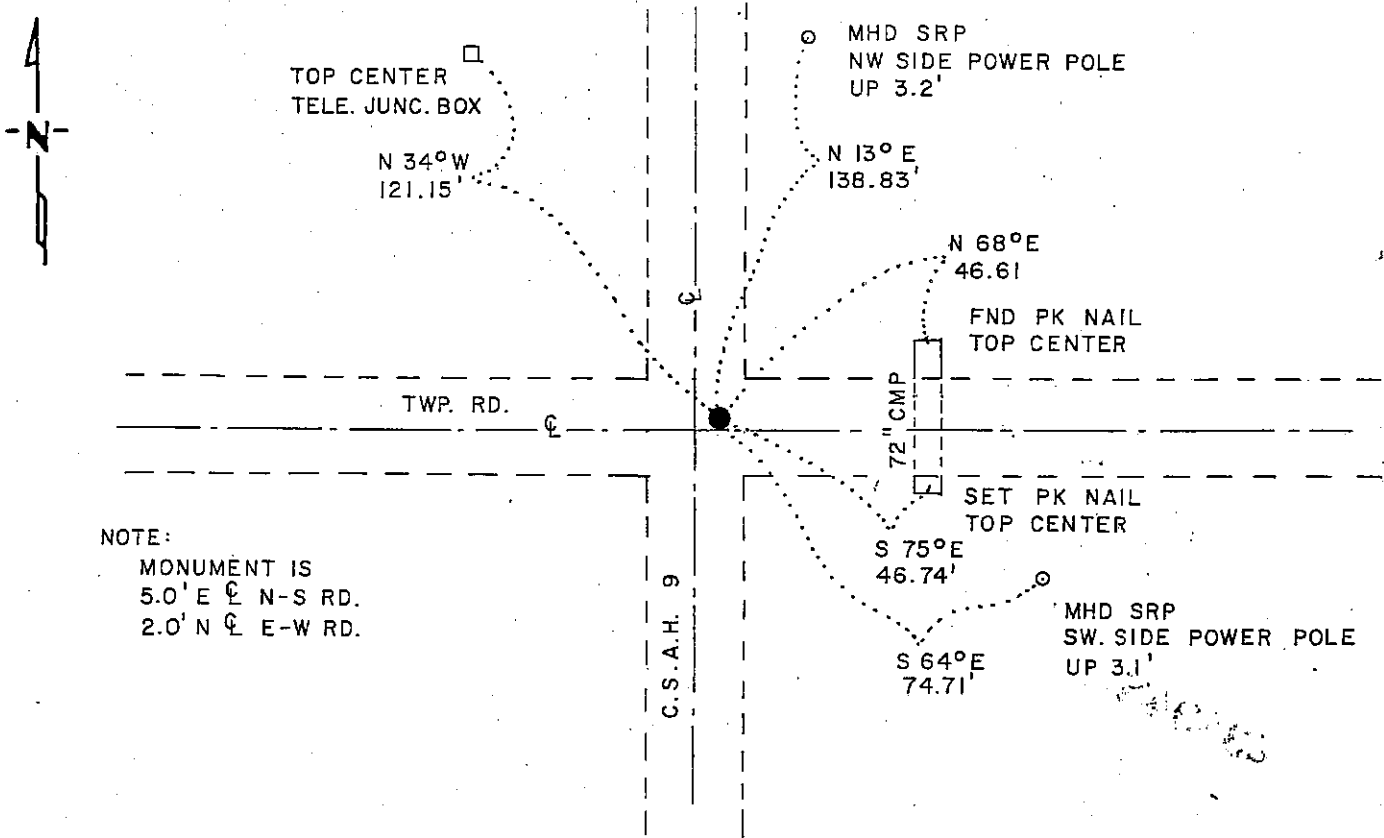
NORTHEAST Corner of Section 14, Township 102 N., Range 41 W., 5th P.M.

STATE OF MINNESOTA, County of NOBLES

At the corner location shown on the sketch:

- On 9-19-88 found a 1/2" IRON ROD DOWN 1.8' SET OVER A 0.7' x 0.4' x 1.2'
DATE STONE, WITH POINTED END UP, DOWN 3.5'
 left monument as found, lowered monument, removed monument (explain)
- On 9-19-88 placed a 1 1/4" x 1 1/4" x 20" PERFORATED STEEL TUBE WITH
DATE ALUMINUM CAP STAMPED "DNR SURVEY MARKER", DOWN 0.3' OVER IRON ROD

SKETCH OF REFERENCE TIES



NOTE:
 MONUMENT IS
 5.0' E ϕ N-S RD.
 2.0' N ϕ E-W RD.

BEARINGS OBSERVED WITH COMPASS

Statement of evidence relative to this corner location is on back of page.

LRP 9-20-88
6-965

I hereby certify that this document and the data contained herein was prepared by me or under my direct supervision.

Lowell R. Pommeroy 9-20-88
SIGNATURE DATE

Registration No. 17005

Land Surveyor, Professional Engineer

County Surveyor, County Engineer

OFFICE OF THE COUNTY RECORDER
County of Nobles

I hereby certify that this document was filed in the Co. Recorders office at 5:05 P.M. on the 21st day of September A.D., 19 88

County Recorder Jayne Howard

By _____, Deputy

DOCUMENT NO. 234949

The DNR Bureau of Engineering contacted the following offices for survey information on this corner:

MN Secretary of State
Nobles County Recorder and Highway Engineer
Mn/DOT at Windom
Martin Land Surveying at Worthington
Rieke-Carroll-Muller

- 1868 The U.S. General Land Office notes in the Secretary of State's Office show the corner is a post, set in a mound with pits.
- No Date Surveyor's Record Book A-1, on page 42, obtained from the County Recorder's Office, contains a survey, surveyor not indicated. Survey shows this corner is marked by a post with mound and pits. Corner measures 41.80 chains from the north quarter corner Section 13.
- 1896 Surveyor's Record Book A-2, on page 242, obtained from the County Recorder's Office, contains a survey by Milton S. Smith, County Surveyor. Survey shows at stone at this corner.
- 1923 A Field Book of ties to government corners along State Road #14, obtained from the County Highway Engineer, shows this corner as a wood stake with two reference ties. From stationing, a distance of 2645.6 ft. is shown from this corner to the east quarter corner Section 11.
- 1959 A Field Book of ties and monuments of government corners, obtained from the County Highway Engineer, shows a stake was found at the corner. Placed an iron pin.
- 1963 A Field Book of ties to government corners along C.S.A.H. 9, obtained from the County Highway Engineer, shows this corner as a found iron pin down 0.5 ft. as found by MHD. From stationing, a distance of 2644.25 ft. is shown from this corner to the east quarter corner Section 11.
- 1964 A Field Book of ties and monuments of government corners, obtained from the
1966 County Highway Engineer, shows an iron pin at the corner with three reference ties.
- 1972 June 20, the DNR Bureau of Engineering traversed to the area of the corner and found an iron pipe down 0.5 ft. at the intersection of roads north-south and east-west. Corner was located from County Highway Department ties. Corner measures:
2680.00 ft. from the north quarter corner Section 13
2644.27 ft. from the east quarter corner Section 11
- 1978 February, Mn/DOT found a 60d nail down 0.1 ft. at the intersection of roads north-south and east-west. Searched for and found one county tie.
- 1978 August 21, the DNR Bureau of Engineering hired a backhoe to dig for evidence of this corner. Dug an 11 ft. by 11 ft. hole centered at the intersection of roads north-south and east-west. Found a 3/8" by 12" spike down 0.2 ft. over a 3/4" by 21" iron rod, at said intersection. Found a 0.7 ft. by 0.4 ft. by 1.2 ft. field stone down 3.5 ft. with pointed end up. Stone is 5.95 ft. east and 2.00 ft. north of the found spike. Continued digging to a depth of 7.5 ft., but found nothing else. Reset the stone as found, and set a 1/2" by 1.2 ft. iron rod over it. Reset the spike as found. Stone was found to measure:
2674.03 ft. from the north quarter corner Section 13
2642.42 ft. from the east quarter corner Section 11
- Analysis of the available information led the DNR Bureau of Engineering to conclude that the found stone marks the location of the corner per the 1896 survey.
- 1988 August, the DNR Bureau of Engineering revisited the corner and found that county road improvements have destroyed many of the 1978 ties. Went to the County Highway Engineer's Office and obtained a field book of ties to government corners. Book of ties shows that in 1985 found an iron pin down 12". New reference ties were taken in 1986. The County Highway Engineer said they documented what they had found and took ties, setting a 1/2" iron rod at the corner after highway construction. The DNR Bureau of Engineering was NOT given permission to dig in the pavement to confirm what the county had set. Used the county ties and received a metal attraction at their intersection. However, this is the same location as 1964 and 1966 which is NOT the location of the corner per the work performed by the DNR Bureau of Engineering in 1978. Set a DNR Survey Marker at the location of the stone found in 1978.