

CERTIFICATE OF LOCATION OF GOVERNMENT CORNER

NORTHEAST Corner of Section 15, Township 102 N, Range 41 W, 5th P.M.

STATE OF MINNESOTA, County of NOBLES

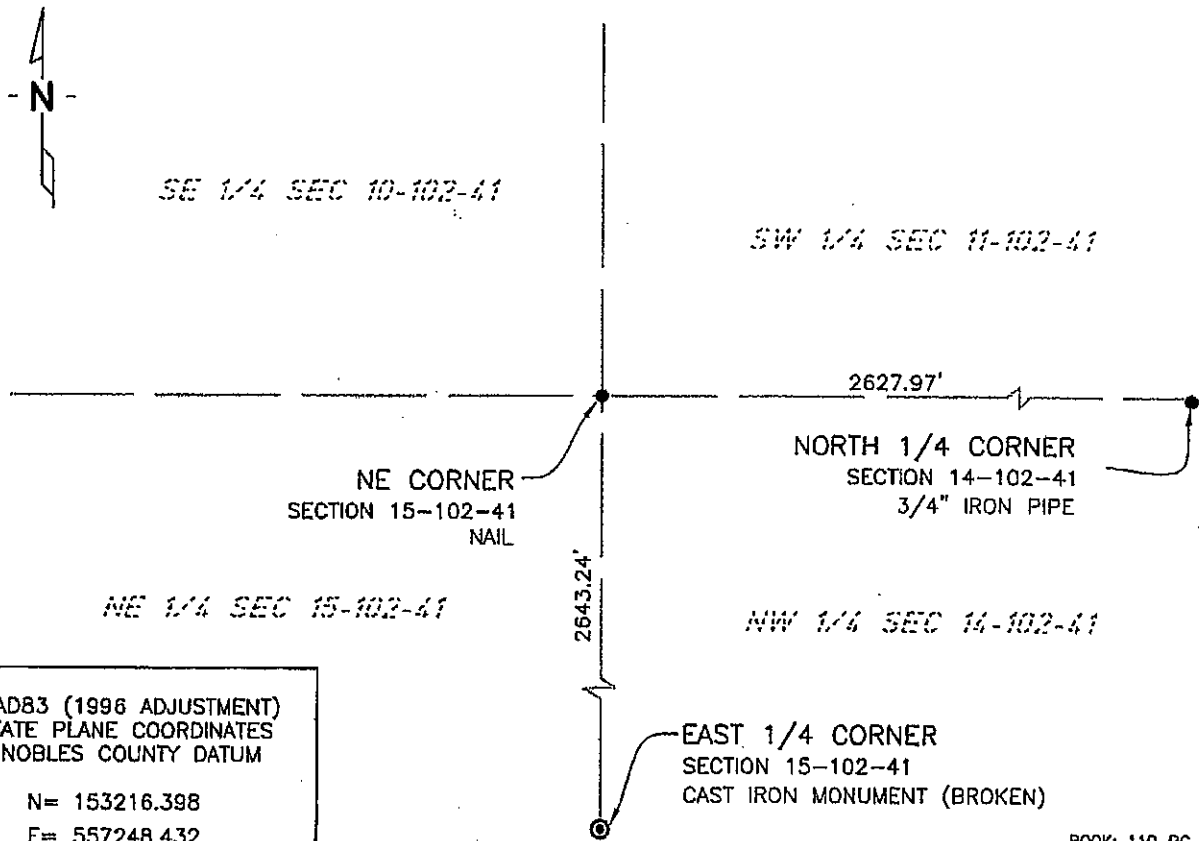
At the corner location shown on the sketch:

On 7/14/03 found a NAIL
DATE

left monument as found, lowered monument, removed monument (explain)

On _____ placed a _____
DATE

SKETCH OF REFERENCE TIES



NAD83 (1996 ADJUSTMENT)
 STATE PLANE COORDINATES
 NOBLES COUNTY DATUM

N= 153216.398
 E= 557248.432

BOOK: 110 PG. 41
 I:\NOBLES\CERTIFICATES\2005\CAD\NE15-102-41

Statement of evidence relative to this corner location is on back of page.

I hereby certify that this document and the data contained herein was prepared by me or under my direct supervision.

Janele Fowlds 4-24-06
JANELE FOWLDS DATE

Registration No. 26748

Land surveyor, Professional Engineer
 County Surveyor, County Engineer

OFFICE OF THE COUNTY RECORDER

County of _____
 I hereby certify that this document was filed in the Co. Recorders office at _____ M. on the _____ day of _____ A.D., 19__

County Recorder _____
 By _____, Deputy

DOCUMENT NO. _____

Statement of Evidence

Northeast Corner Section 15, Township 102 North, Range 41 West

Original Notes

- 1899 Nobles County Highway Department records show a stone monument.
- 1959 Nobles County Highway Department records show a stone monument and also placed an iron pin with the following ties:
TP – Northwest 51.51’
FE Post – West 32.41’
Cor FE Post – Southwest 46.50’
- 1978 The DNR research this corner, finding a 5/8” iron pin 0.3 feet down. In talking to neighbors and no other disputing evidence found, this iron pin is accepted as the corner. This evidence was recorded on September 15. The ties are as follows:
Nail & Disk in Power Pole – Southwest 47.29’
Nail & Disk in Tel Ped – Southeast 49.40’
Nail & Disk in Power Pole – Southwest 73.96’
- 2003 On July 14, Bolton & Menk, Inc., Mankato, found a nail 0.4 below surface of township road.

The evidence is not conclusive as to the true corner location, however the occupational and collateral evidence suggest that this is a reasonable location as to the corner. Additional information regarding the preparation of this certificate can be obtained by contacting: Bolton & Menk, Inc., Mankato, MN.