

# CERTIFICATE OF LOCATION OF GOVERNMENT CORNER

NORTHEAST Corner of Section 16, Township 102 N, Range 41 W, 5th P.M.  
STATE OF MINNESOTA, County of NOBLES

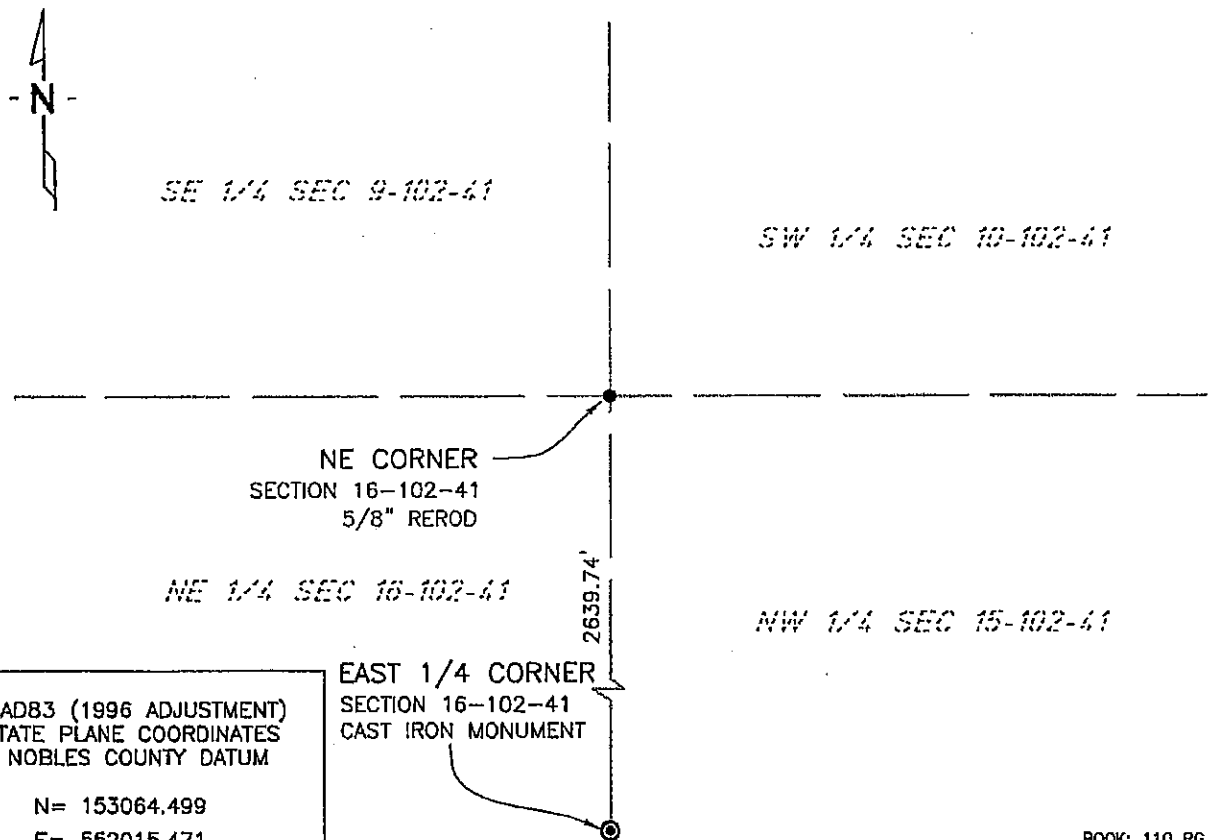
At the corner location shown on the sketch:

☒ On 7/14/03 found a 5/8" REROD  
DATE

☒ left monument as found, ☐ lowered monument, ☐ removed monument (explain)

☐ On \_\_\_\_\_ placed a \_\_\_\_\_  
DATE

## SKETCH OF REFERENCE TIES



NAD83 (1996 ADJUSTMENT)  
STATE PLANE COORDINATES  
NOBLES COUNTY DATUM

N= 153064.499  
E= 552015.471

EAST 1/4 CORNER  
SECTION 16-102-41  
CAST IRON MONUMENT

BOOK: 110 PG. 41  
I:\NOBLES\CERTIFICATES\2005\CAD\NE16-102-41

Statement of evidence relative to this corner location is on back of page.

I hereby certify that this document and the data contained herein was prepared by me or under my direct supervision.

Janele Fowlds  
JANELE FOWLDS

4-24-06  
DATE

Registration No. 26748

☒ Land surveyor, ☐ Professional Engineer  
☐ County Surveyor, ☐ County Engineer

## OFFICE OF THE COUNTY RECORDER

County of \_\_\_\_\_

I hereby certify that this document was filed in the Co. Recorders office at \_\_\_\_\_ M. on the \_\_\_\_\_ day of \_\_\_\_\_ A.D., 19\_\_\_\_

County Recorder \_\_\_\_\_

By \_\_\_\_\_, Deputy

DOCUMENT NO. \_\_\_\_\_

Statement of Evidence

Northeast Quarter Corner Section 16, Township 102 North, Range 41 West

Original Notes

- 1973      Nobles County Highway Department records show iron pin with the following ties:  
            Nail & Disk in Power Pole – East 79.30  
            Nail & Disk in Power Pole – West 49.80'
- No Date    A plat of Ebeling's Subdivision, in Dewald Township, shows a 5/8" rebar, at this corner.
- 2003      On July 14, Bolton & Menk, Inc., found a 5/8" rerod 0.2 below the surface county road.