

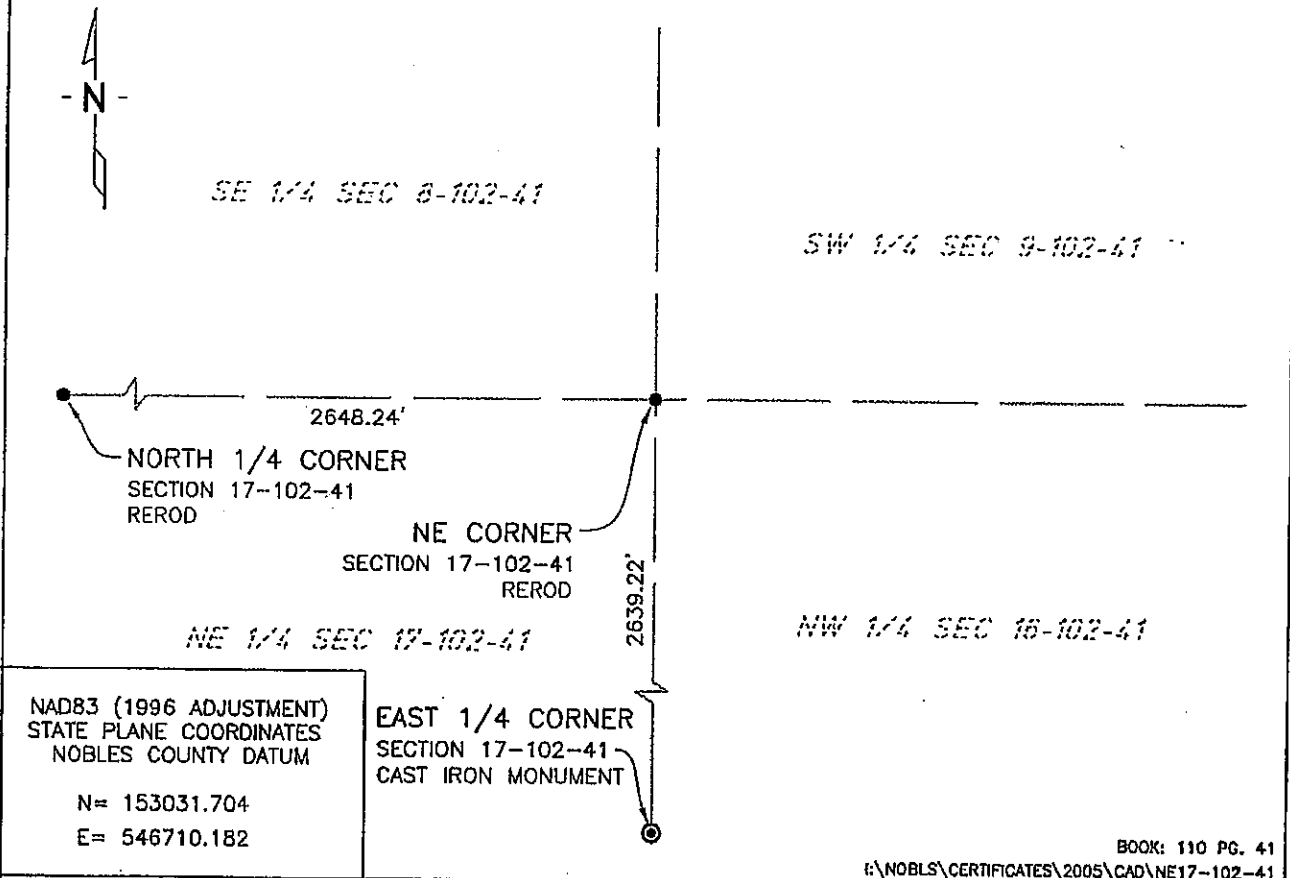
CERTIFICATE OF LOCATION OF GOVERNMENT CORNER

NORTHEAST Corner of Section 17, Township 102 N, Range 41 W, 5th P.M.
 STATE OF MINNESOTA, County of NOBLES

At the corner location shown on the sketch:

- On 7/14/03 found a REROD
DATE
- left monument as found, lowered monument, removed monument (explain)
- On _____ placed a _____
DATE

SKETCH OF REFERENCE TIES



Statement of evidence relative to this corner location is on back of page.

I hereby certify that this document and the data contained herein was prepared by me or under my direct supervision.

Janele Fowlds 4-24-06
JANELE FOWLDS DATE

Registration No. 26748

- Land surveyor, Professional Engineer
- County Surveyor, County Engineer

OFFICE OF THE COUNTY RECORDER

County of _____

I hereby certify that this document was filed in the Co. Recorders office at _____ M. on the _____ day of _____ A.D., 19____

County Recorder _____
 By _____, Deputy

DOCUMENT NO. _____

Statement of Evidence

Northeast Corner Section 17, Township 102 North, Range 41 West

Original Notes

- 1897 Nobles County Highway Department records show a stone monument being set.
- 1912 Nobles County Highway Department records show a stone monument.
- 1959 Nobles County Highway Department records show a stake and also placed a iron pin with the following ties:
Power Pole – Northwest 43.52’
TP – Northeast 45.17’
Cor FE Post – East 32.51’
- 2003 On July 14, Bolton & Menk, Inc., Mankato, found a rerod 0.2 foot below surface of township road.