

# CERTIFICATE OF LOCATION OF GOVERNMENT CORNER

NORTHEAST Corner of Section 18, Township 102 N, Range 41 W, 5th P.M.

STATE OF MINNESOTA, County of NOBLES

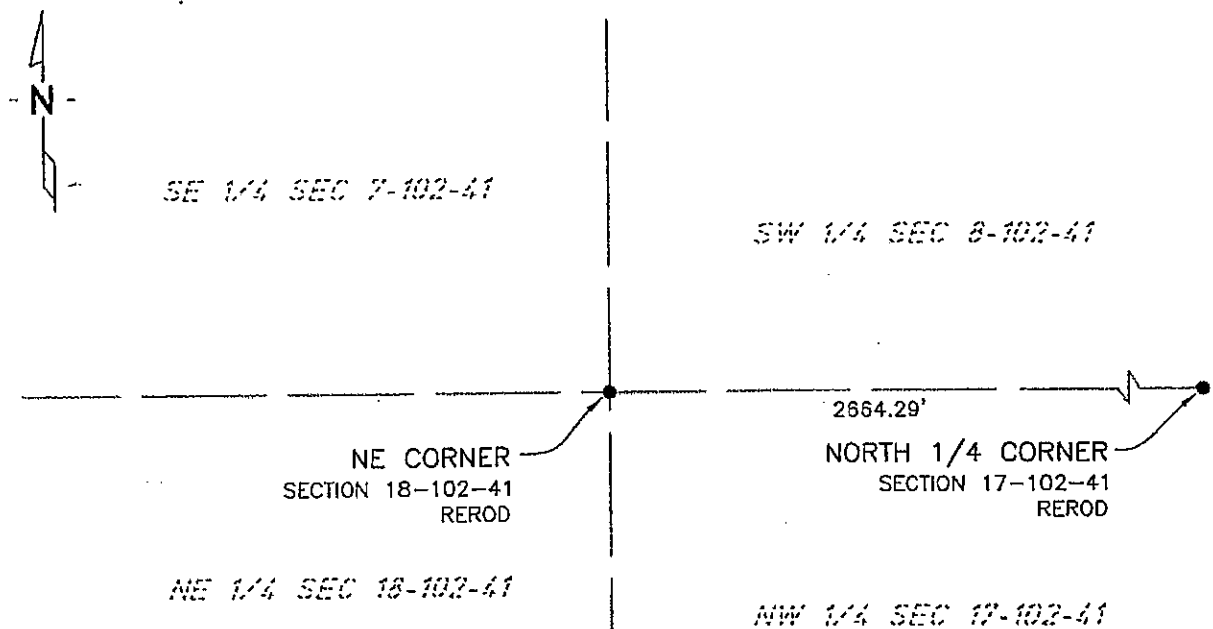
At the corner location shown on the sketch:

On 7/14/03 found a REROD  
DATE

left monument as found,  lowered monument,  removed monument (explain)

On \_\_\_\_\_ placed a \_\_\_\_\_  
DATE

### SKETCH OF REFERENCE TIES



NAD83 (1996 ADJUSTMENT)  
 STATE PLANE COORDINATES  
 NOBLES COUNTY DATUM

N= 153006.270  
 E= 541397.744

BOOK: 110 PG. 41  
 I:\NOBLS\CERTIFICATES\2005\CAD\NE18-102-41

Statement of evidence relative to this corner location is on back of page.

I hereby certify that this document and the data contained herein was prepared by me or under my direct supervision.

Janele Fowlds 4-24-06  
JANELE FOWLDS DATE

Registration No. 26748

- Land surveyor,  Professional Engineer  
 County Surveyor,  County Engineer

### OFFICE OF THE COUNTY RECORDER

County of \_\_\_\_\_

I hereby certify that this document was filed in the Co. Recorders office at \_\_\_\_\_ M. on the \_\_\_\_\_ day of \_\_\_\_\_ A.D., 19\_\_\_\_

County Recorder \_\_\_\_\_

By \_\_\_\_\_, Deputy

DOCUMENT NO. \_\_\_\_\_

Statement of Evidence

Northeast Corner Section 18, Township 102 North, Range 41 West

Original Notes

- 1926 Nobles County Highway Department records show a stone monument.
- 1952 Nobles County Highway Department records show a stone monument, and also placed a wood stake.
- 1960 Nobles County Highway Department records show an iron pin.
- 1980 Nobles County Highway Department records show an iron pin.
- 1991 Nobles County Highway Department records show a placed steel pin after overlay.
- 1998 Nobles County Highway Department records show a PK nail with the following ties:  
Nail & Disk in Post – Northwest 17.540m  
Top “X” Tele Ped – Northwest 23.600m  
Nail & Disk in FE Post – Northeast 19.100m
- 2003 On July 14, Bolton & Menk, Inc., Mankato, found a rerod 0.3’ below surface of county road.

The evidence is not conclusive as to the true corner location, however the occupational and collateral evidence suggest that this is a reasonable location as to the corner. Additional information regarding the preparation of this certificate can be obtained by contacting: Bolton & Menk, Inc., Mankato, MN.