

# CERTIFICATE OF LOCATION OF GOVERNMENT CORNER

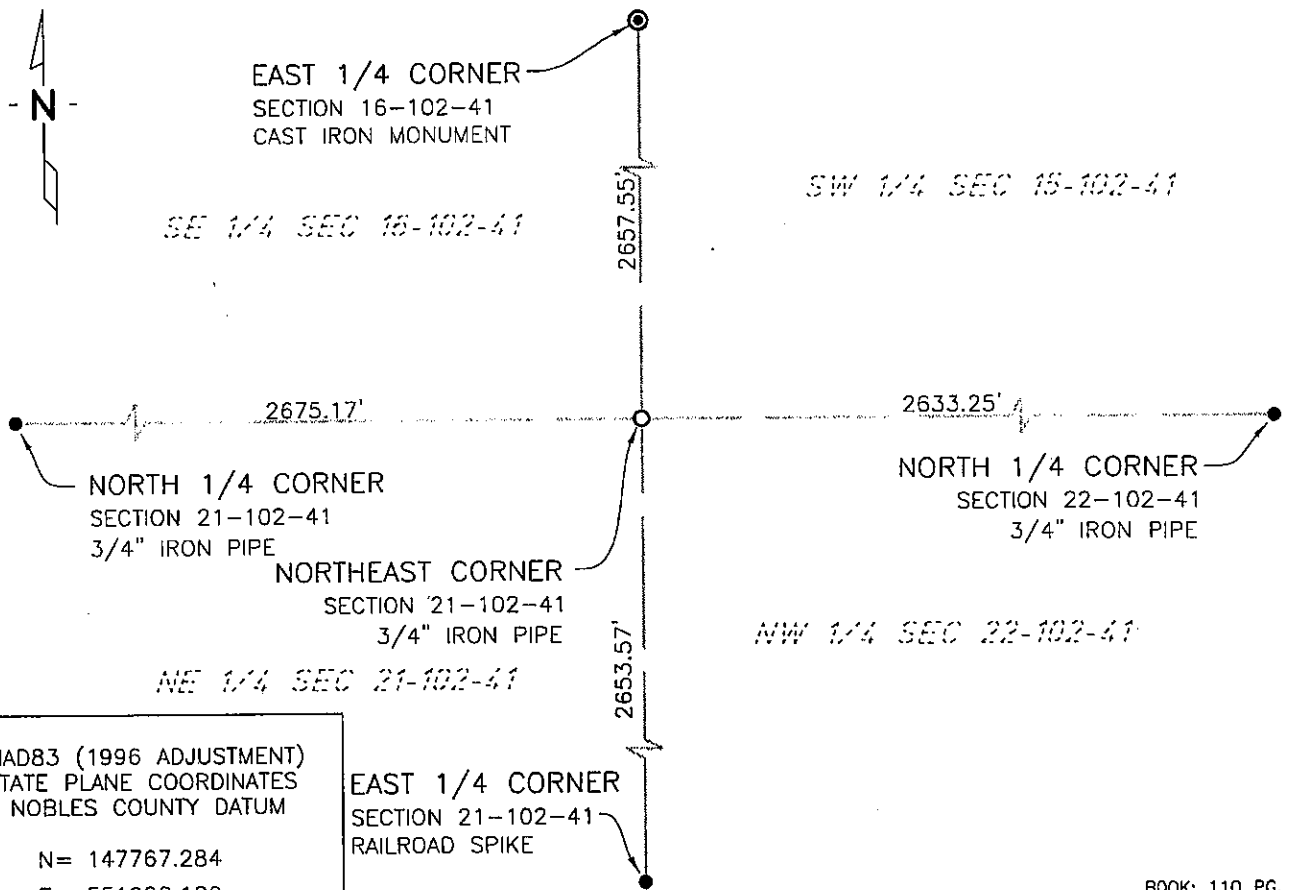
NORTHEAST Corner of Section 21, Township 102 N, Range 41 W, 5th P.M.

STATE OF MINNESOTA, County of NOBLES

At the corner location shown on the sketch:

- On 7/14/03 found a 5/8" REROD  
DATE
- left monument as found,  lowered monument,  removed monument (explain)
- On 1/25/06 placed a 3/4" X 18" IRON PIPE MONUMENT  
DATE

### SKETCH OF REFERENCE TIES



NAD83 (1996 ADJUSTMENT)  
STATE PLANE COORDINATES  
NOBLES COUNTY DATUM  
  
N= 147767.284  
E= 551988.180

EAST 1/4 CORNER  
SECTION 21-102-41  
RAILROAD SPIKE

BOOK: 110 PG. 41  
I:\NOBLS\CERTIFICATES\2005\CAD\NE21-102-41

Statement of evidence relative to this corner location is on back of page.

I hereby certify that this document and the data contained herein was prepared by me or under my direct supervision.

Janele Fowlds 4-24-06  
JANELE FOWLDS DATE

Registration No. 26748

- Land surveyor,  Professional Engineer
- County Surveyor,  County Engineer

### OFFICE OF THE COUNTY RECORDER

County of \_\_\_\_\_

I hereby certify that this document was filed in the Co. Recorders office at \_\_\_\_M. on the \_\_\_\_\_ day of \_\_\_\_\_ A.D., 19\_\_

County Recorder \_\_\_\_\_

By \_\_\_\_\_, Deputy

DOCUMENT NO. \_\_\_\_\_

Statement of Evidence

Northeast Corner Section 21, Township 102 North, Range 41 West

Original Notes

- 1959 Nobles County Highway Department records show a hole in concrete.
- 1973 Nobles County Highway Department records show an iron pin.
- No Date County ties as follows:  
Nail & Disk in Power Pole – Southeast 52.35'  
Nail & Disk in Power Pole – Northwest 67.95'  
Steel Sign Post – Southwest 66.85'  
“X” on top Conc. Box Culv – Northeast 63.55'
- 1978 A, Martin Land Surveying, Worthington, calculation sheet shows a concrete nail and R.L.S. tag being set as per found MN/DOT R/W monuments.
- 1978 Nobles County Highway Department records show a concrete nail by Martin Land Surveying, Worthington. This nail did not fit ties.
- 1992 Nobles County Highway Department records show a hole in concrete found and a 5/8"x4" rebar set on March 26.
- 1999 A survey, by Madsen Land Surveying Inc., Fairmont, shows a PK nail in the bituminous paving of County Road 35. Madsen's ties were as follows:  
Bottle Cap in Power Pole – Southeast 52.34'  
Bottle Cap in Power Pole – Northwest 67.97'  
Nobles Cty 61 Sign Post – Northeast 125.50'  
CL Highway – North 2.75'
- 2003 On July 14, Bolton & Menk, Inc., Mankato, found a 5/8" rerod 0.3 foot below surface of county road.
- 2006 On January 25, Bolton & Menk, Inc., Fairmont, placed a 3/4" x 18" iron pipe monument. Said monument is 1 foot south of centerline of C.S.A.H. 35, on centerline of County Road 61, north and 4 feet west of township road south.