

CERTIFICATE OF LOCATION OF GOVERNMENT CORNER

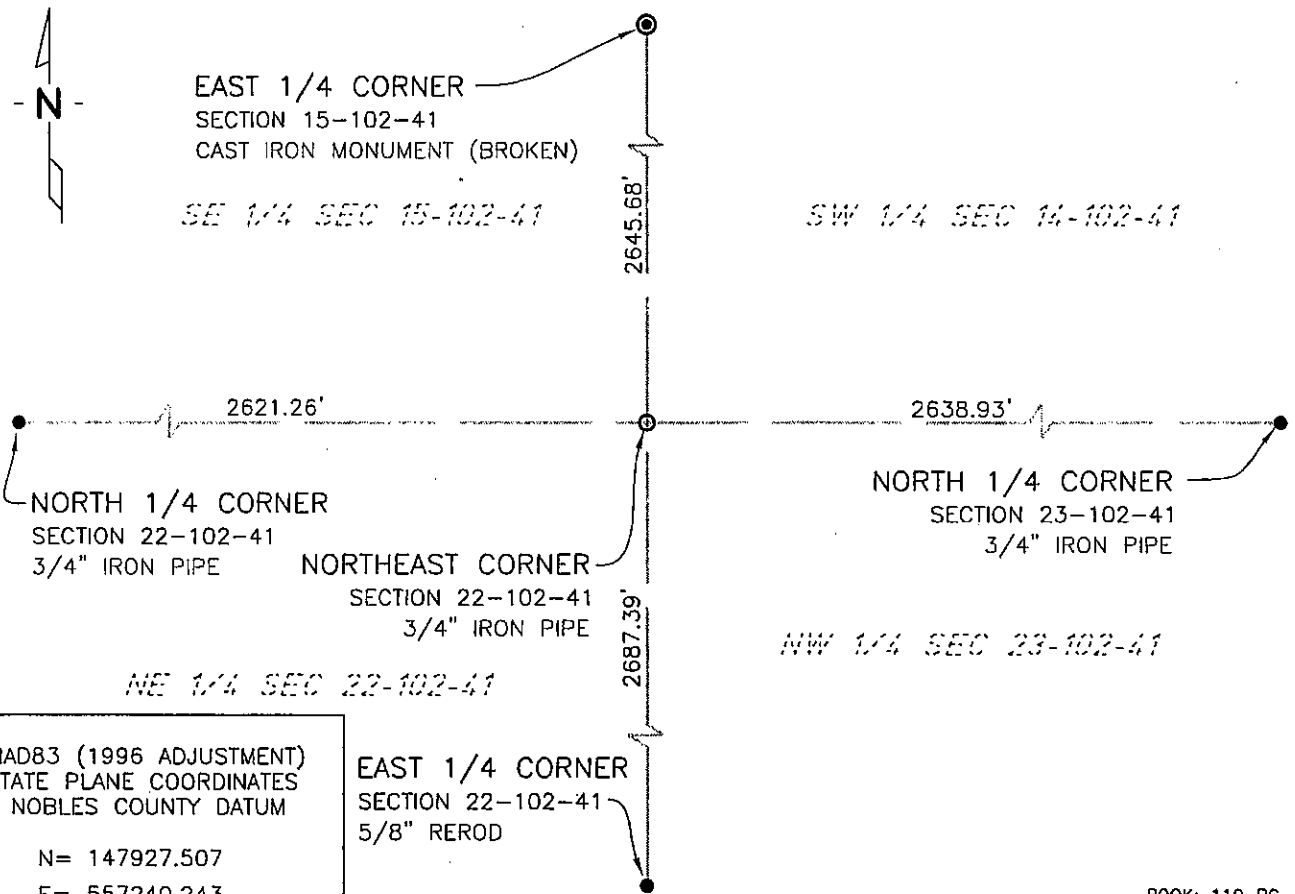
NORTHEAST Corner of Section 22, Township 102 N, Range 41 W, 5th P.M.

STATE OF MINNESOTA, County of NOBLES

At the corner location shown on the sketch:

- On 7/14/03 found a 5/8" REROD
DATE
- left monument as found, lowered monument, removed monument (explain)
- On 1/25/06 placed a 3/4" X 18/" IRON PIPE MONUMENT
DATE

SKETCH OF REFERENCE TIES



BOOK: 110 PG. 41
I:\NOBLS\CERTIFICATES\2005\CAD\NE22-102-41

Statement of evidence relative to this corner location is on back of page.

I hereby certify that this document and the data contained herein was prepared by me or under my direct supervision.

Janele Fowlds 4-24-06
JANELE FOWLDS DATE

Registration No. 26748

- Land surveyor, Professional Engineer
- County Surveyor, County Engineer

OFFICE OF THE COUNTY RECORDER

County of _____

I hereby certify that this document was filed in the Co. Recorders office at ____M. on the _____ day of _____ A.D., 19__

County Recorder _____

By _____, Deputy

DOCUMENT NO. _____

Statement of Evidence

Northeast Corner Section 22, Township 102 North, Range 41 West

Original Notes

- 1917 Nobles County Highway Department records show a stone monument.
- 1960 Nobles County Highway Department records show an iron pin established as corner.
- 1978 A Martin Land Surveying calculation sheet shows a concrete nail and R.L.S. tag being set as per MN/DOT R/W monuments.
- 1978 Nobles County Highway Department records show a concrete nail used by Martin Land Surveying, Worthington.
- No Date County ties
R/W Marker – Southeast 71.28'
R/W Marker – Southwest 63.92'
R/W Marker – Northeast 70.78'
- 1992 Nobles County Highway Department records show they dug for corner and found nothing. Ties were checked and a 5/8"x4" rebar was set on March 27.
- 2003 On July 14, Bolton & Menk, Inc., Mankato, found a 5/8" rerod 0.2 foot below surface of county road.
- 2006 On January 25, Bolton & Menk, Inc., Fairmont, placed a 3/4" x 18" iron pipe monument which is 1.5 feet north of the centerline of C.S.A.H. 35, 8 feet west of centerline of township to south, and on line with occupation to the north. The iron pipe was set in the previously located rerod. The rerod was lost due to construction.