

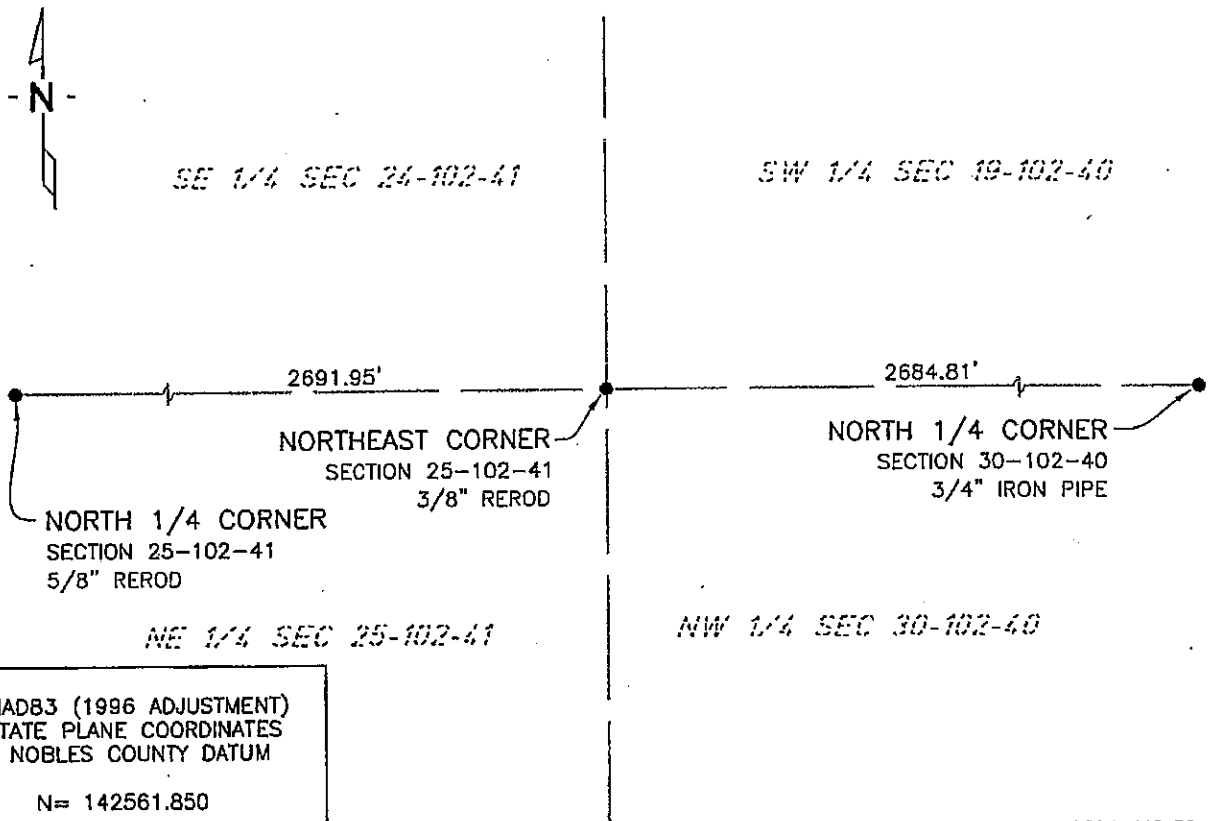
# CERTIFICATE OF LOCATION OF GOVERNMENT CORNER

NORTHEAST Corner of Section 25, Township 102 N, Range 41 W, 5th P.M.  
 STATE OF MINNESOTA, County of NOBLES

At the corner location shown on the sketch:

- On 7/15/03 found a 3/8" REROD  
DATE
- left monument as found,  lowered monument,  removed monument (explain)
- On \_\_\_\_\_ placed a \_\_\_\_\_  
DATE

### SKETCH OF REFERENCE TIES



NAD83 (1996 ADJUSTMENT)  
 STATE PLANE COORDINATES  
 NOBLES COUNTY DATUM

N= 142561.850  
 E= 567883.075

BOOK: 110 PG. 42  
 I:\NOBLS\CERTIFICATES\2005\CAD\NE25-102-41

Statement of evidence relative to this corner location is on back of page.

I hereby certify that this document and the data contained herein was prepared by me or under my direct supervision.

Janele Fowlds 4-24-06  
JANELE FOWLDS DATE

Registration No. 26748

- Land surveyor,  Professional Engineer
- County Surveyor,  County Engineer

### OFFICE OF THE COUNTY RECORDER

County of \_\_\_\_\_

I hereby certify that this document was filed in the Co. Recorders office at \_\_\_\_\_ M. on the \_\_\_\_\_ day of \_\_\_\_\_ A.D., 19\_\_\_\_

County Recorder \_\_\_\_\_

By \_\_\_\_\_, Deputy

DOCUMENT NO. \_\_\_\_\_

Statement of Evidence

Northeast Corner Section 25, Township 102 North, Range 41 West

Original Notes

- 1914 Nobles County Highway Department records show a stone monument.
- 1933 Nobles County Highway Department records show a stone monument.
- 1939 Nobles County Highway Department records show a stone monument.
- 2003 On July 15, Bolton & Menk, Inc., Mankato, found a 3/8" rerod 1.0 foot below the surface.

The evidence is not conclusive as to the true corner location, however the occupational and collateral evidence suggest that this is a reasonable location as to the corner. Additional information regarding the preparation of this certificate can be obtained by contacting: Bolton & Menk, Inc., Mankato, MN.