

CERTIFICATE OF LOCATION OF GOVERNMENT CORNER

NORTHEAST Corner of Section 26, Township 102 N, Range 41 W, 5th P.M.
STATE OF MINNESOTA, County of NOBLES

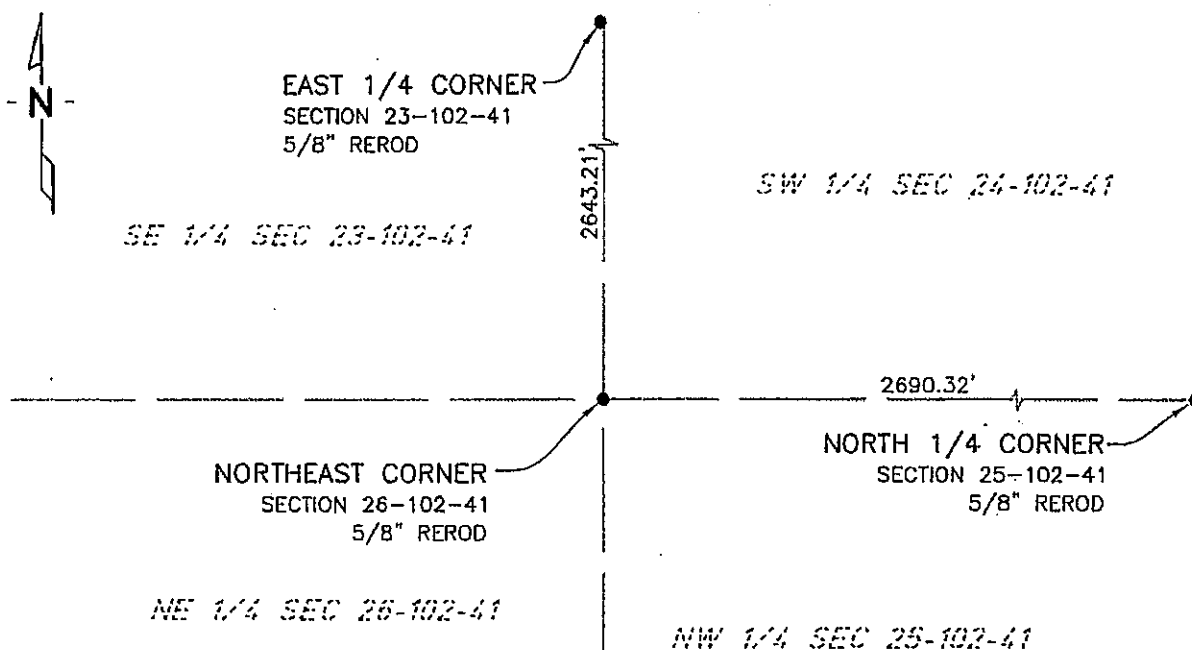
At the corner location shown on the sketch:

☒ On 7/14/03 found a 5/8" REROD
DATE

☒ left monument as found, ☐ lowered monument, ☐ removed monument (explain)

☐ On _____ placed a _____
DATE

SKETCH OF REFERENCE TIES



NAD83 (1996 ADJUSTMENT)
STATE PLANE COORDINATES
NOBLES COUNTY DATUM

N= 142581.323
E= 562500.841

BOOK: 110 PG. 41

I:\NOBLS\CERTIFICATES\2005\CAD\NE26-102-41

Statement of evidence relative to this corner location is on back of page.

I hereby certify that this document and the data contained herein was prepared by me or under my direct supervision.

Janele Fowlds
JANELE FOWLDS

4-24-06
DATE

Registration No. 26748

☒ Land surveyor, ☐ Professional Engineer
☐ County Surveyor, ☐ County Engineer

OFFICE OF THE COUNTY RECORDER

County of _____

I hereby certify that this document was filed in the Co. Recorders office at _____ M. on the _____ day of _____ A.D., 19____

County Recorder _____

By _____, Deputy

DOCUMENT NO. _____

Statement of Evidence

Northeast Corner Section 26, Township 102 North, Range 41 West

Original Notes

- 1914 Nobles County Highway Department records show a stone monument.
- 1916 Nobles County Highway Department records show a stone monument.
- 1939 Nobles County Highway Department records show a stone monument.
- 1964 Nobles County Highway Department records show an iron pin, and also placed a wood stake.
- 1971 Nobles County Highway Department records show an iron pipe.
- 1985 Nobles County Highway Department records show an iron pin.
- 1991 Nobles County Highway Department records show a 5/8"x12" rebar placed.
- 1992 Nobles County Highway Department records show a 5/8"x4" rebar placed in new bit, has the following ties:
Nail & Disk in Power Pole – Southeast 62.9'
Bottom Bolt in Yield Sign – Northeast 55.0'
Bottom Bolt in Yield Sign – Southwest 52.7'
Nail & Disk in Power Pole – Southwest 57.15'
- 2003 On July 15, Bolton & Menk, Inc., Mankato, found a 5/8" rerod at the surface of a county road.