

CERTIFICATE OF LOCATION OF GOVERNMENT CORNER

NORTHEAST Corner of Section 29, Township 102 N, Range 41 W, 5th P.M.

STATE OF MINNESOTA, County of NOBLES

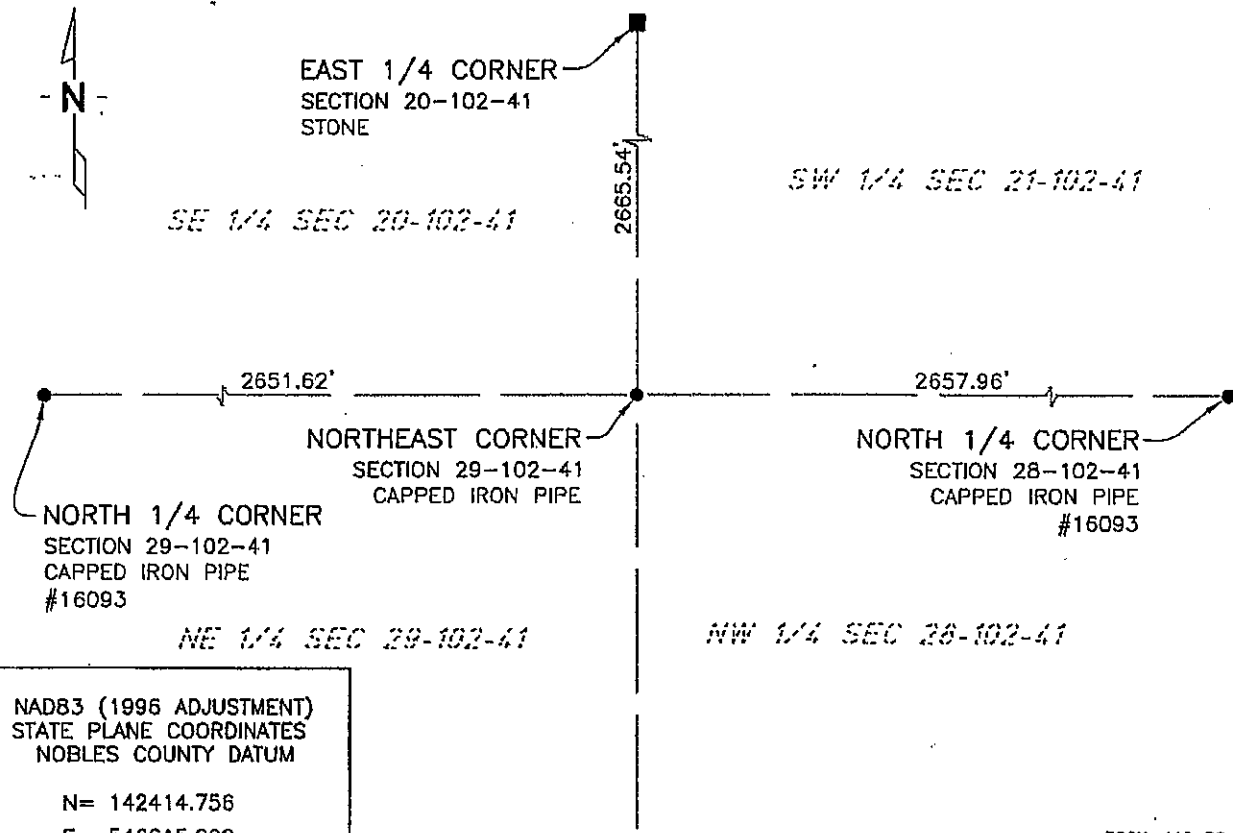
At the corner location shown on the sketch:

On 7/14/03 found a CAPPED IRON PIPE #16093
DATE

left monument as found, lowered monument, removed monument (explain)

On _____ placed a _____
DATE

SKETCH OF REFERENCE TIES



NAD83 (1996 ADJUSTMENT)
 STATE PLANE COORDINATES
 NOBLES COUNTY DATUM

N= 142414.756
 E= 546615.202

BOOK: 110 PG. 41
 I:\NOBLES\CERTIFICATES\2005\CAD\NE29-102-41

Statement of evidence relative to this corner location is on back of page.

I hereby certify that this document and the data contained herein was prepared by me or under my direct supervision.

Janele Fowlds 4-24-06
JANELE FOWLDS DATE

Registration No. 26748

Land surveyor, Professional Engineer
 County Surveyor, County Engineer

OFFICE OF THE COUNTY RECORDER

County of _____

I hereby certify that this document was filed in the Co. Recorders office at _____ M. on the _____ day of _____ A.D., 19__

County Recorder _____

By _____, Deputy

DOCUMENT NO. _____

Statement of Evidence

Northeast Corner Section 29, Township 102 North, Range 41 West

Original Notes

- 1896 Nobles County Highway Department records show a stone monument.
- 1901 Nobles County Highway Department records show a stone monument.
- 1987 A Bell Surveying Inc., Worthington, shows a found stone monument. Bell then set a rebar marked with registration number 16093 above stone.
- 2003 On July 15, Bolton & Menk, Inc., Mankato, found a capped iron pipe marked with registration number 16093.