

CERTIFICATE OF LOCATION OF GOVERNMENT CORNER

NORTHWEST Corner of Section 18, Township 102N, Range 41W, 5th P.M.

STATE OF MINNESOTA, County of NOBLES

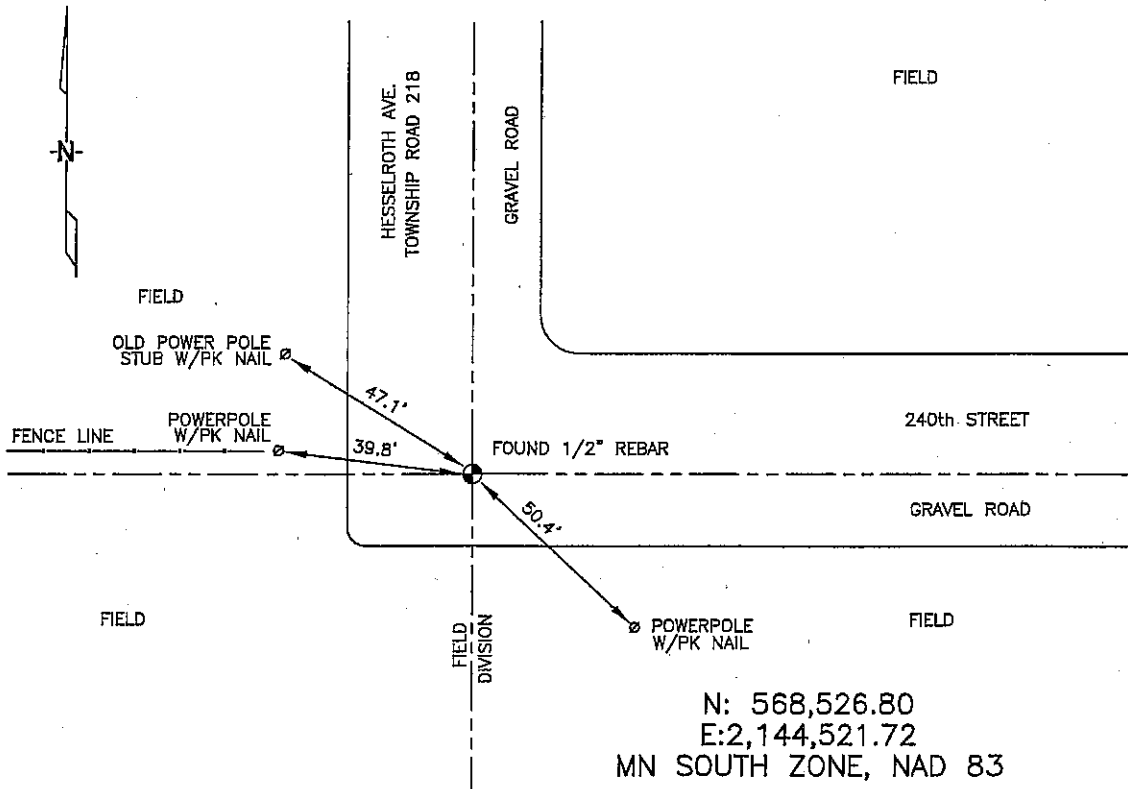
At the corner location shown on the sketch:

On 3/08/2006 found a 1/2" REBAR, 1" DEEP, centerline of N road
DATE

left monument as found, lowered monument, removed monument (explain)

On _____ placed a _____
DATE

SKETCH OF REFERENCE TIES



Statement of evidence relative to this corner location is on back of page.

I hereby certify that this document and the data contained herein was prepared by me or under my direct supervision.

Thomas V. Zeff

Thomas V. Zeff

3/08/06

DATE

Registration No. 44563

Land Surveyor, Professional Engineer

County Surveyor, County Engineer

OFFICE OF THE COUNTY RECORDER

County of _____

I hereby certify that this document was filed in the Co. Recorders office at _____ .M. on the _____ day of _____ A.D., 20_____

County Recorder _____

By _____, Deputy

DOCUMENT NO. _____

STATEMENT OF EVIDENCE:

NORTHWEST CORNER, SECTION 18, T. 102 N., R. 41 W.,
NOBLES COUNTY, MINNESOTA

1868 T.B WALKER, US. Deputy Surveyor, monumented corner.

3/08/2006 Ulteig Engineers, Inc., Survey Crew, Dennis Lavallie Party Chief,
found a 1/2" rebar, 1" down.

Ties: NW-47.1' to pk nail in wood power pole, SE side, up 16"
W-39.8' to pk nail in wood power pole, East side, up 18"
SE-50.4' to pk nail in wood power pole, North side, up 24"