

CERTIFICATE OF LOCATION OF GOVERNMENT CORNER

5¹/₄ CORNER OF SECTION 26 TOWNSHIP, 102 N RANGE, 41 W 5TH P.M.

STATE OF MINNESOTA, COUNTY OF NOBLES

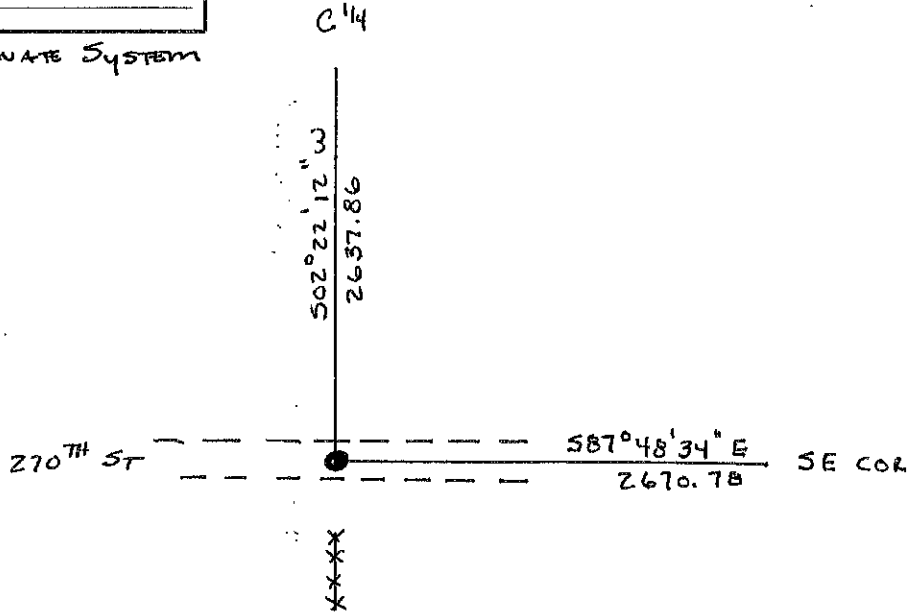
AT THE CORNER LOCATION SHOWN ON THE SKETCH

- ON 8/15/18 FOUND A NO MONUMENT. A CULVERT PIPE HAS BEEN INSTALLED REMOVING THE STONE.
- LEFT MONUMENT AS FOUND LOWERED MONUMENT REMOVED MONUMENT (EXPLAIN)
- ON 8/15/18 PLACED A 5/8" x 10" IRON STAKE WITH RLS 22461 CAP IN LINE WITH FENCE ON E OF ROAD.

SECTION CORNER COORDINATES	
NORTHING	<u>137328.10</u>
EASTING	<u>559841.83</u>

SKETCH OF REFERENCE

NOBLES COUNTY COORDINATE SYSTEM



COORDINATES ARE NAD '83 US STATE PLANE MINNESOTA SOUTH

NGS BENCHMARK I.D. _____	NGS BENCHMARK I.D. _____
NORTHING _____	NORTHING _____
EASTING _____	EASTING _____

STATEMENT OF EVIDENCE RELATIVE TO THIS CORNER LOCATION IS ON PAGE 2.

I HEREBY CERTIFY THAT THIS DOCUMENT AND THE DATA CONTAINED HEREIN WAS PREPARED BY ME OR UNDER MY DIRECT SUPERVISION.

Steven B. Kor
SIGNATURE

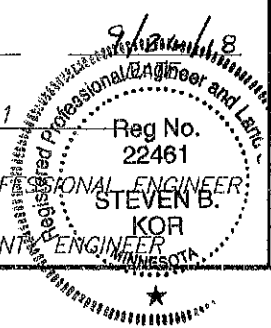
MN. LICENSE NO. 22461

LAND SURVEYOR

COUNTY SURVEYOR

PROFESSIONAL ENGINEER

COUNTY ENGINEER



OFFICE OF THE COUNTY RECORDER

I HEREBY CERTIFY THAT THIS DOCUMENT WAS FILED IN THE COUNTY RECORDERS OFFICE

AT _____ ON THE _____ DAY OF _____

COUNTY RECORDER _____

BY _____ DEPUTY

DOCUMENT NO. _____