

## CERTIFICATE OF LOCATION OF GOVERNMENT CORNER

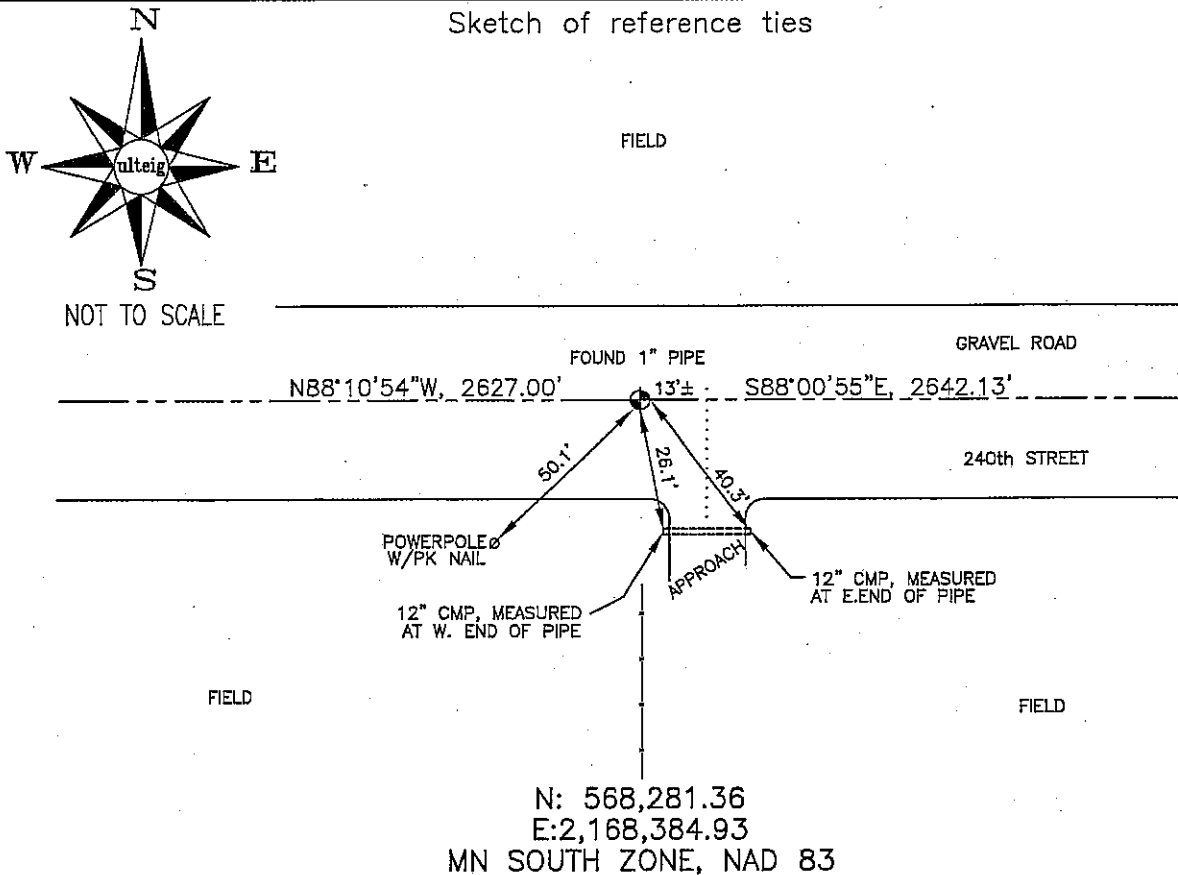
SOUTH 1/4 Corner of Section 11, Township 102N, Range 41W, 5TH P.M.

STATE OF MINNESOTA, County of NOBLES

At the corner location shown on the sketch :

- On 3/06/2006 found 1" IRON PIPE, 5" DEEP, IN GRAVEL ROAD,  
OPPOSITE FENCE LINE RUNNING SOUTH.
- left monument as found,  lowered monument,  removed monument (explain)
- On \_\_\_\_\_ set \_\_\_\_\_

Sketch of reference ties



Statement of evidence relative to this corner location is on back page

I hereby certify that this document and the data contained herein was prepared by me or under my direct supervision.

Thomas V. Zeff 5/16/06  
 Thomas V. Zeff Date  
 Registration No. 44563

- Land Surveyor,  Professional Engineer  
 County Surveyor,  County Engineer

### OFFICE OF THE COUNTY RECORDER

County of \_\_\_\_\_

I hereby certify that this document was filed in the Co. Recorders office at \_\_\_\_\_ .M. on the \_\_\_\_\_ day of \_\_\_\_\_ A.D. , 20\_\_\_\_

County Recorder \_\_\_\_\_  
 By \_\_\_\_\_, Deputy

DOCUMENT NO. \_\_\_\_\_

STATEMENT OF EVIDENCE:

SOUTH 1/4 CORNER, SECTION 11, T. 102 N., R. 41 W.,  
NOBLES COUNTY, MINNESOTA

- 1868 Jewett & Howe, US. Deputy Surveyors, monumented corner.
- 1896 Nobles Co. found stone, no ties.
- 1959 Nobles Co. found stone, placed iron pin on top of stone.  
Ties: NW-36.25' to gate post  
SW-32.4' to corner of post  
SE-60.29' to fence post.
- 3/06/2006 Ulteig Engineers, Inc., Survey Crew, Dennis Lavallie Party Chief, found a 1" iron pipe, 5" deep, in the C/L of the gravel road, opposite a fence line running south.  
Ties: E-13'± to C/L of field approach;  
SE-40.3' to top, E. end of 12" C.M.P.;  
SE-26.1' to top, W. end of 12" C.M.P.;  
SW-50.1' to PK nail in NE face of wood, power pole;  
E-2642.13' to SE corner, Section 11;  
W-2627.00' to SW corner, Section 11.