

CERTIFICATE OF LOCATION OF GOVERNMENT CORNER

SOUTH 1/4 Corner of Section 18, Township 102N, Range 41W, 5th P.M.

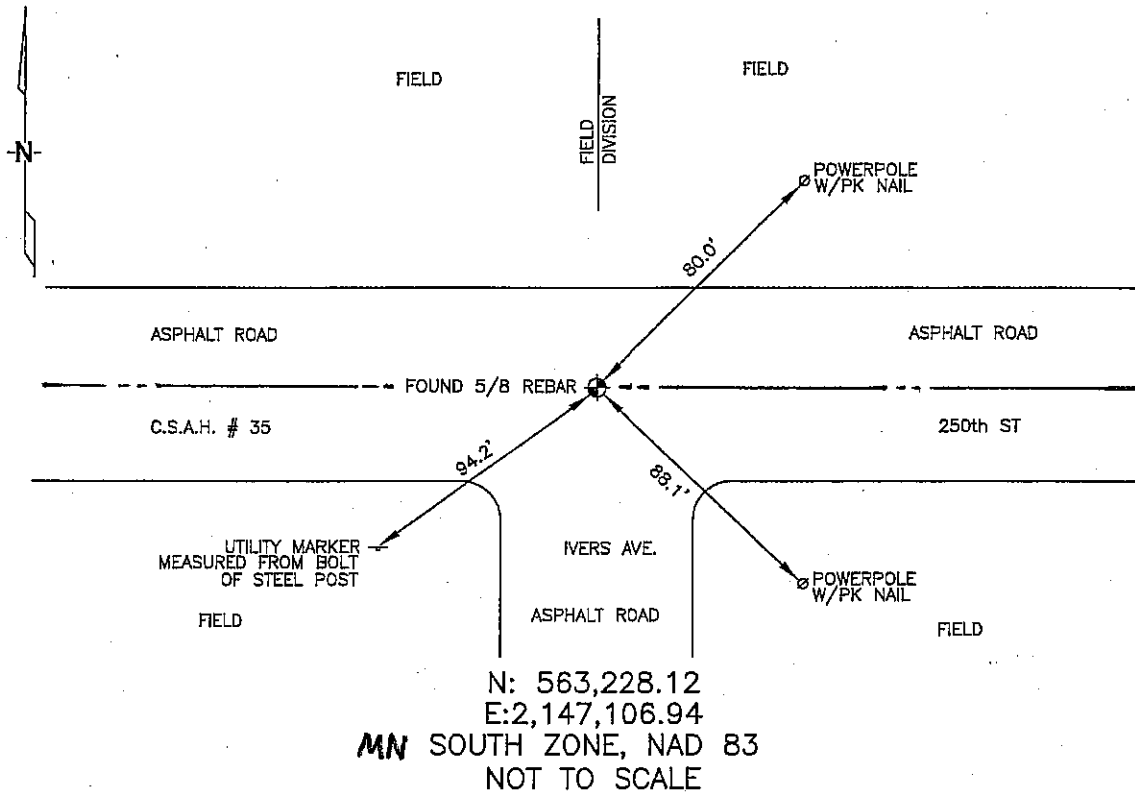
STATE OF MINNESOTA, County of NOBLES

At the corner location shown on the sketch:

On 3/23/2006 found a 5/8" REBAR, 1" DEEP, IN ASPHALT.
DATE

left monument as found, lowered monument, removed monument (explain)
 On _____ placed a _____
DATE

SKETCH OF REFERENCE TIES



Statement of evidence relative to this corner location is on back of page.

I hereby certify that this document and the data contained herein was prepared by me or under my direct supervision.

Thomas V. Jeff 5/15/06
Thomas V. Jeff DATE

Registration No. 44563

- Land Surveyor, Professional Engineer
 County Surveyor, County Engineer

OFFICE OF THE COUNTY RECORDER

County of _____

I hereby certify that this document was filed in the Co. Recorders office at _____ .M. on the _____ day of _____ A.D., 20 _____

County Recorder _____

By _____, Deputy

DOCUMENT NO. _____

STATEMENT OF EVIDENCE:

SOUTH 1/4 CORNER, SECTION 18, T. 102 N., R. 41 W.,
NOBLES COUNTY, MINNESOTA

- 1868 Jewett & Howe, US. Deputy Surveyors, monumented corner.
- 1912 Nobles County Found an iron pin
- 1959 Nobles County found an brass plug
- 1973 Nobles County found an iron pin
- 3/07/2006 Ulteig Engineers, Inc., Survey Crew, Dennis Lavallie Party Chief,
found a 5/8" rebar in centerline of Hwy#35 and Ivers Ave.
- Ties: NE-80.00' to pk nail in wood power pole, up 36", next
to old ties, on NW side of pole.
SE-88.1' to pk nail in wood power pole, up 55", next to
old tie, on e side of pole.
SW-94.2' to head bolt in steel sign post.