

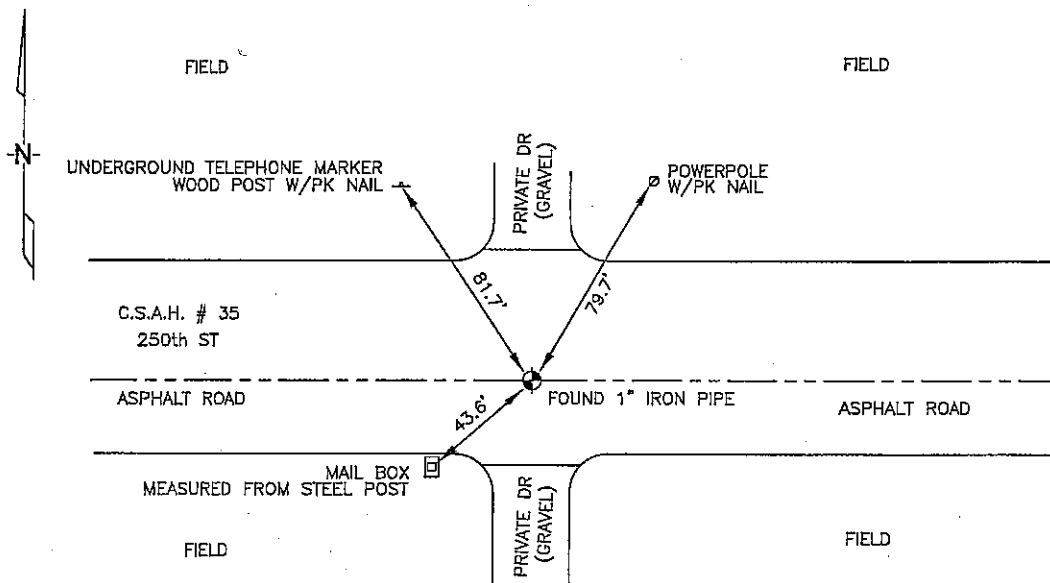
CERTIFICATE OF LOCATION OF GOVERNMENT CORNER

SOUTHWEST Corner of Section 18, Township 102N, Range 41W, 5th P.M.
 STATE OF MINNESOTA, County of NOBLES

At the corner location shown on the sketch:

- On 3/07/2006 found a 1" IRON PIPE IN ASPHALT PAVEMENT, OPPOSITE
DATE C/L OF PRIVATE DRIVE.
- left monument as found, lowered monument, removed monument (explain)
- On _____ placed a _____
DATE

SKETCH OF REFERENCE TIES



N: 563,244.67
 E: 2,144,394.30
 MN SOUTH ZONE, NAD 83
 NOT TO SCALE

Statement of evidence relative to this corner location is on back of page.

I hereby certify that this document and the data contained herein was prepared by me or under my direct supervision.


 _____ 8/11/06
 Thomas J. Zeff DATE

Registration No. 44563

- Land Surveyor, Professional Engineer
- County Surveyor, County Engineer

OFFICE OF THE COUNTY RECORDER

County of _____

I hereby certify that this document was filed in the Co. Recorders office at _____ .M. on the _____ day of _____ A.D., 20____

County Recorder _____

By _____, Deputy

DOCUMENT NO. _____

STATEMENT OF EVIDENCE:

SW CORNER, SECTION 18, T. 102 N., R. 41 W.,
NOBLES COUNTY, MINNESOTA

- 1868 T.B. WALKER, US. Deputy Surveyors, monumented corner.
- 1912 Nobles County Found an iron pin
- 1959 Nobles County found an brass plug
- 1963 MN DOT R/W Map for I-90, calls for a "brass plug" in place at section corner.
- 1973 Nobles County found an iron pin
- 3/07/2006 Uiteig Engineers, Inc., Survey Crew, Dennis Lavallie Party Chief, found a 1" iron pipe in centerline of private drive.
- Ties: NE-79.7' to pk nail in wood power pole, up 24", next to old ties, on E side of pole.
SW-43.6 to mailbox post, up 12"
NW-81.65' to pk nail in wood UGTCM, up 2.3', w side.