

CERTIFICATE OF LOCATION OF GOVERNMENT CORNER

SOUTHWEST Corner of Section 2, Township 102N, Range 41W, 5TH P.M.

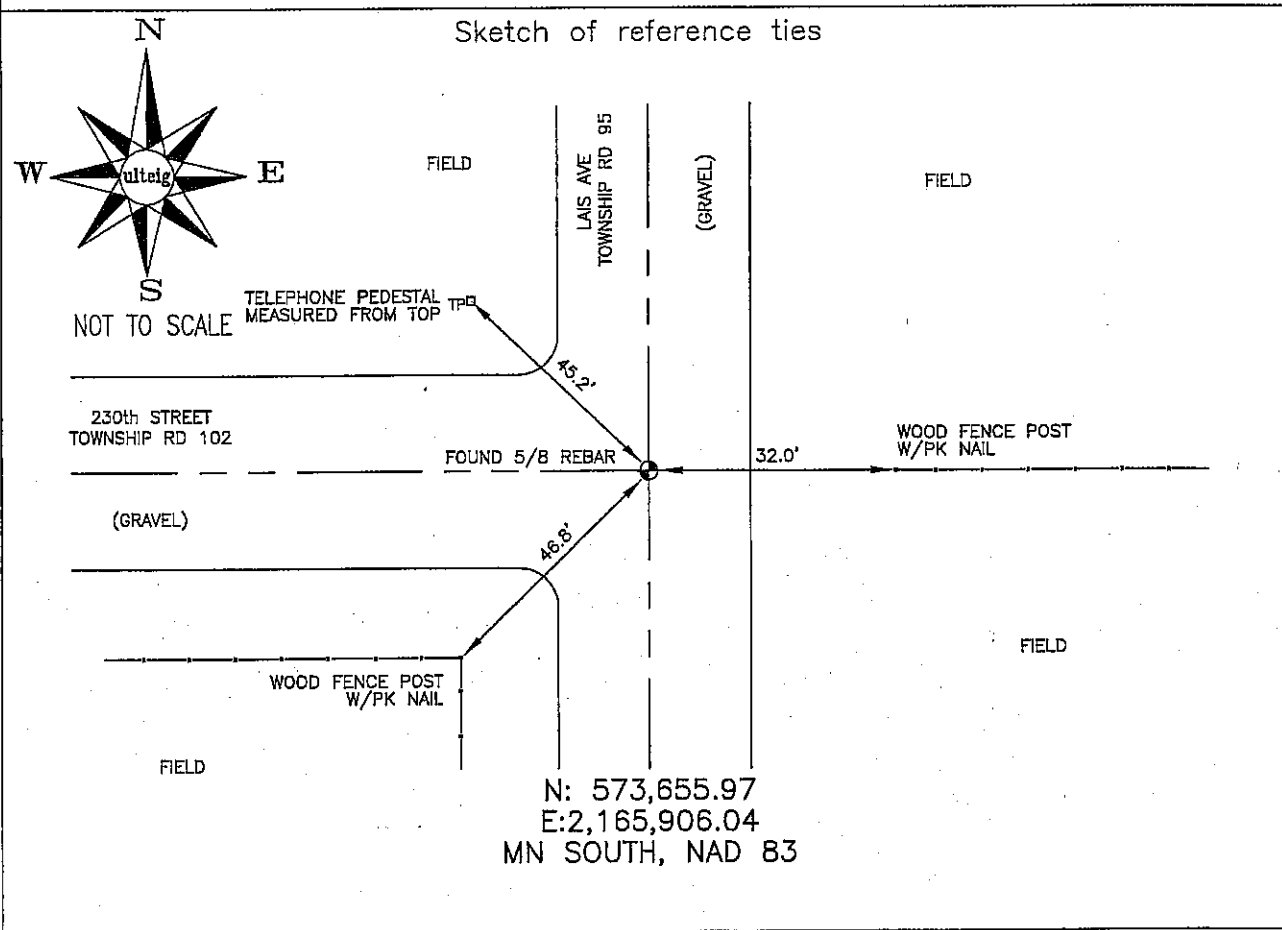
STATE OF MINNESOTA, County of NOBLES

At the corner location shown on the sketch :

On 3/06/2006 found 5/8" REBAR, 8" DEEP, AT INTERSECTION,
3'± NORTH FROM C/L OF WEST ROAD.

left monument as found, lowered monument, removed monument (explain)

On _____ set _____



Statement of evidence relative to this corner location is on back page

I hereby certify that this document and the data contained herein was prepared by me or under my direct supervision.

Thomas V. Zoff 5/15/06
 Thomas V. Zoff Date
 Registration No. 44563

- Land Surveyor, Professional Engineer
 County Surveyor, County Engineer

OFFICE OF THE COUNTY RECORDER

County of _____

I hereby certify that this document was filed in the Co. Recorders office at _____ M. on the day of _____ A.D. , 20

County Recorder _____
 By _____, Deputy

DOCUMENT NO. _____

STATEMENT OF EVIDENCE:

SOUTHWEST CORNER, SECTION 2, T. 102 N., R. 41 W.,
NOBLES COUNTY, MINNESOTA

- 1868 Jewett & Howe, US. Deputy Surveyors, monumented corner.
- 1896 Nobles Co. found a stone, no ties.
- 1898 Nobles Co. found stone, no ties.
- 1937 Nobles Co. found a stake, no ties.
- 3/06/2006 Ulteig Engineers, Inc., Survey Crew, Dennis Lavallie Party Chief, found a 5/8" rebar, 8" deep, in the C/L of the north-south gravel road and 3'± south from the C/L of the gravel road running west.
Ties: E-32.0' to PK nail in W face of wood, fence post;
SW-46.8' to PK nail in NE face of wood, fence post;
NW-45.2' to top, center of telephone pedestal.