

# CERTIFICATE OF LOCATION OF GOVERNMENT CORNER

SE CORNER OF SECTION 26 TOWNSHIP, 102N RANGE, 41W 5TH P.M.

STATE OF MINNESOTA, COUNTY OF NOBLES

AT THE CORNER LOCATION SHOWN ON THE SKETCH

ON 8/7/18 FOUND A 5/8" REBAR

LEFT MONUMENT AS FOUND     LOWERED MONUMENT     REMOVED MONUMENT (EXPLAIN)

ON \_\_\_\_\_ PLACED A \_\_\_\_\_

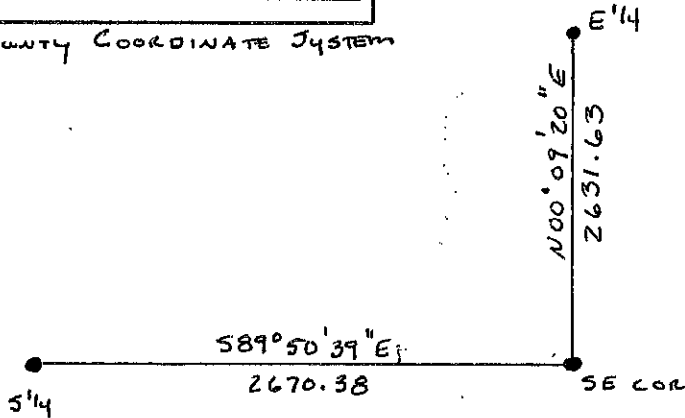
**SECTION CORNER COORDINATES**

NORTHING 137,320.87

EASTING 562,512.29

## SKETCH OF REFERENCE

*NOBLES COUNTY COORDINATE SYSTEM*



LIES IN CENTER OF  
THE INTERSECTION

COORDINATES ARE NAD '83 US STATE PLANE MINNESOTA SOUTH

NGS BENCHMARK I.D. _____	NGS BENCHMARK I.D. _____
NORTHING _____	NORTHING _____
EASTING _____	EASTING _____

STATEMENT OF EVIDENCE RELATIVE TO THIS CORNER LOCATION IS ON PAGE 2.

I HEREBY CERTIFY THAT THIS DOCUMENT AND THE DATA CONTAINED HEREIN WAS PREPARED BY ME OR UNDER MY DIRECT SUPERVISION.

Steven B. Kor  
SIGNATURE

10/19/18  
DATE

MN. LICENSE NO. 22461

LAND SURVEYOR

PROFESSIONAL ENGINEER

COUNTY SURVEYOR

COUNTY ENGINEER

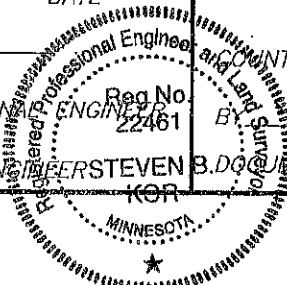
OFFICE OF THE COUNTY RECORDER

I HEREBY CERTIFY THAT THIS DOCUMENT WAS FILED IN THE COUNTY RECORDERS OFFICE

AT \_\_\_\_\_ ON THE \_\_\_\_\_ DAY OF \_\_\_\_\_

BY \_\_\_\_\_ COUNTY RECORDER

DEPUTY



BY STEVEN B. KOR DOCUMENT NO. \_\_\_\_\_