

# CERTIFICATE OF LOCATION OF GOVERNMENT CORNER

E 1/4 CORNER OF SECTION 26 TOWNSHIP, 102 N RANGE, 41 W 5TH P.M.

STATE OF MINNESOTA, COUNTY OF NOBLES

AT THE CORNER LOCATION SHOWN ON THE SKETCH

☒ ON 8/7/18 FOUND A 5/8" REBAR

☒ LEFT MONUMENT AS FOUND ☐ LOWERED MONUMENT ☐ REMOVED MONUMENT (EXPLAIN)

☐ ON \_\_\_\_\_ PLACED A \_\_\_\_\_

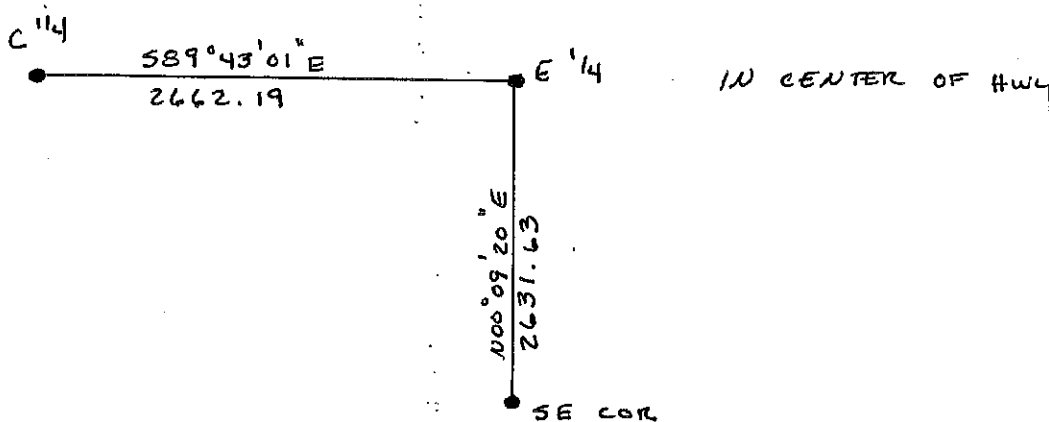
## SECTION CORNER COORDINATES

NORTHING 139,952.41

EASTING 562,519.39

NOBLES COUNTY COORDINATE SYSTEM

## SKETCH OF REFERENCE



COORDINATES ARE NAD '83 US STATE PLANE MINNESOTA SOUTH

NGS BENCHMARK I.D. \_\_\_\_\_

NORTHING \_\_\_\_\_

EASTING \_\_\_\_\_

NGS BENCHMARK I.D. \_\_\_\_\_

NORTHING \_\_\_\_\_

EASTING \_\_\_\_\_

STATEMENT OF EVIDENCE RELATIVE TO THIS CORNER LOCATION IS ON PAGE 2.

I HEREBY CERTIFY THAT THIS DOCUMENT AND THE DATA CONTAINED HEREIN WAS PREPARED BY ME OR UNDER MY DIRECT SUPERVISION.

Steven B. Ka

SIGNATURE

MN. LICENSE NO. 22461

☒ LAND SURVEYOR

☐ COUNTY SURVEYOR

☒ PROFESSIONAL ENGINEER  
Reg No. 22461  
STEVEN B. KOR  
ENGINEER  
MINNESOTA

☐ COUNTY ENGINEER

## OFFICE OF THE COUNTY RECORDER

I HEREBY CERTIFY THAT THIS DOCUMENT WAS FILED IN THE COUNTY RECORDERS OFFICE

AT \_\_\_\_\_ ON THE \_\_\_\_\_ DAY OF \_\_\_\_\_

COUNTY RECORDER \_\_\_\_\_

DEPUTY \_\_\_\_\_

DOCUMENT NO. \_\_\_\_\_