

CERTIFICATE OF LOCATION OF GOVERNMENT CORNER

WEST 1/4 Corner of Section 14, Township 102N Range 41W 5TH P.M.

STATE OF MINNESOTA, County of NOBLES

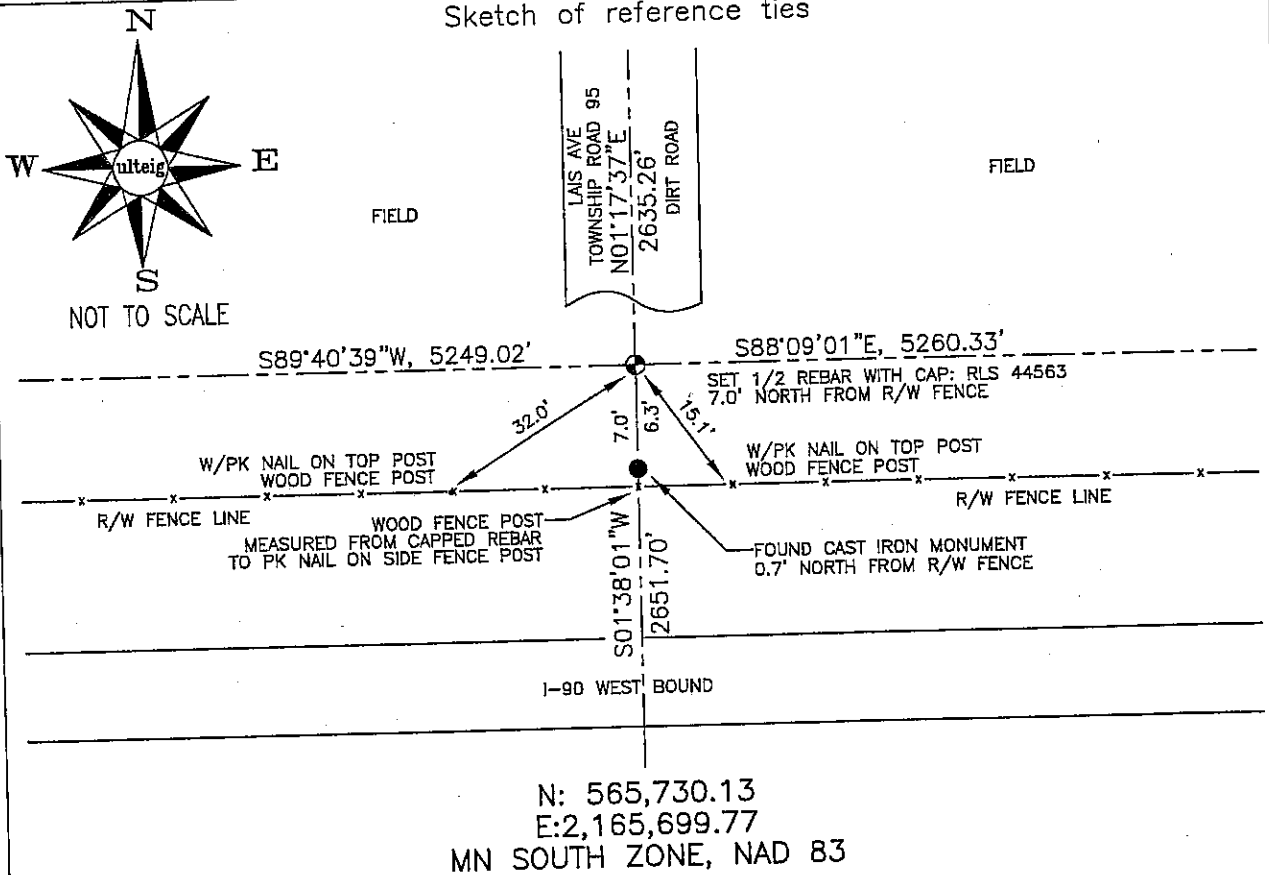
At the corner location shown on the sketch :

On _____ found _____

left monument as found, lowered monument, removed monument (explain)

On 3/07/2006 set A 5/8" REBAR WITH CAP: RLS 44563.

Sketch of reference ties



Statement of evidence relative to this corner location is on back page

I hereby certify that this document and the data contained herein was prepared by me or under my direct supervision.

Thomas V. Zell

 Thomas V. Zell

5/16/06
 Date

Registration No. 44563

- Land Surveyor, Professional Engineer
 County Surveyor, County Engineer

OFFICE OF THE COUNTY RECORDER

County of _____

I hereby certify that this document was filed in the Co. Recorders office at _____ .M. on the _____ day of _____ A.D. , 20

County Recorder _____
 By _____, Deputy

DOCUMENT NO. _____

STATEMENT OF EVIDENCE:

WEST 1/4 CORNER, SECTION 14, T. 102 N., R. 41 W.,
NOBLES COUNTY, MINNESOTA

- 1868 Jewett & Howe, US. Deputy Surveyors, monumented corner.
- 1963 MN DOT R/W Map for I-90, calls for a spike in place at the 1/4 corner, at PI Sta 1936+78.23, with curve having a delta=02°10'30", a degree of curve=00°10' and an arc length=1305.0'.
- 3/07/2006 Ulteig Engineers, Inc., Survey Crew, Dennis Lavallie Party Chief, found a cast iron monument 6.3±' south, and rejected its location. Set a 5/8" rebar with cap: RLS 44563, so as to be in harmony with the MN DOT R/W Map for I-90, File #18-6, sheet 4 of 8. Monument found id believed to be a right-of-way monument.
Ties: S-7.0' to PK nail in wood, fence post;
SE-15.1' to PK nail on top of wood, fence post;
SW-32.0' to PK nail on top of wood, fence post;
N-2635.26' to NW corner, Section 14;
S-2651.70' to SW corner Section 14;
E-5260.33' to E 1/4 corner, Section 14;
W-5249.02' to W 1/4 corner, Section 15.