

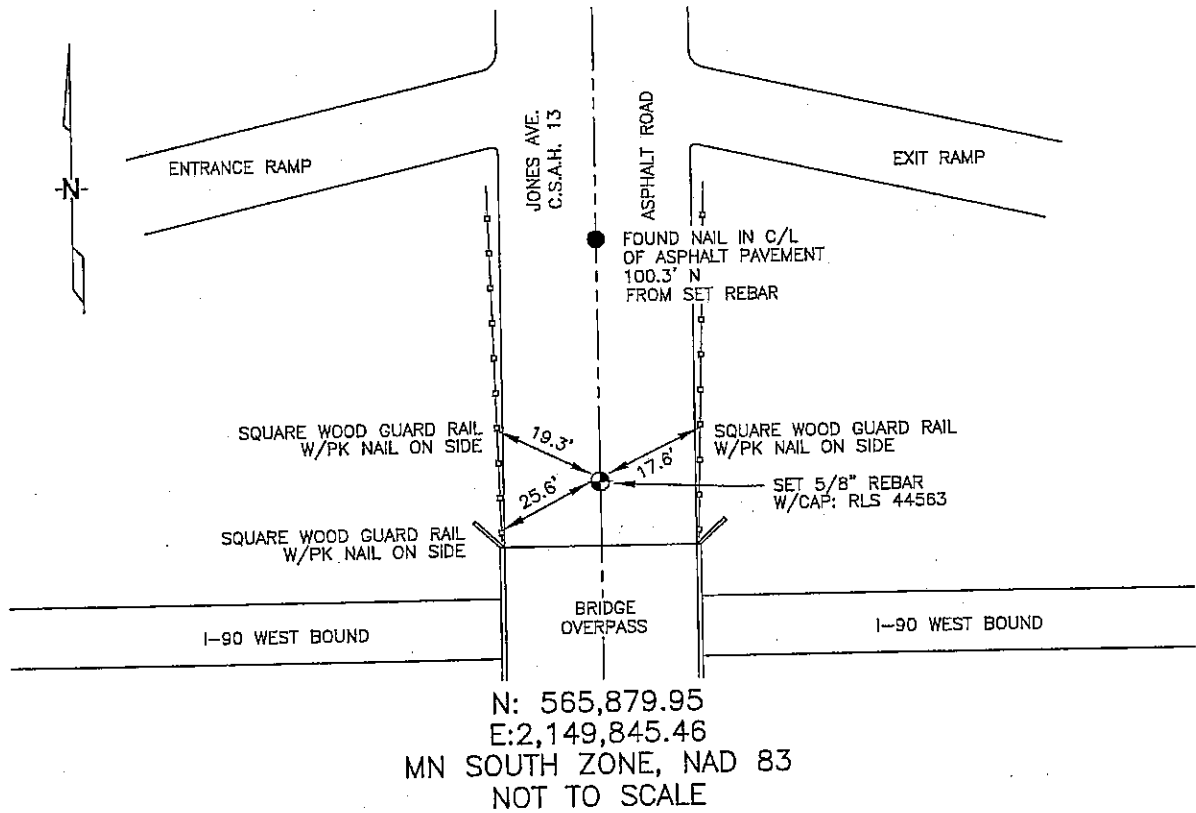
CERTIFICATE OF LOCATION OF GOVERNMENT CORNER

WEST 1/4 Corner of Section 17, Township 102N, Range 41W, 5th P.M.
 STATE OF MINNESOTA, County of NOBLES

At the corner location shown on the sketch:

- On 3/08/2006 found a NAIL IN C/L, 100.3' N FROM SET REBAR.
DATE
- left monument as found, lowered monument, removed monument (explain)
- On 3/08/2006 placed a 5/8" CAPPED REBAR, 2" DEEP, IN C/L OF
DATE ASPHALT PAVEMENT.

SKETCH OF REFERENCE TIES



Statement of evidence relative to this corner location is on back of page.

I hereby certify that this document and the data contained herein was prepared by me or under my direct supervision.

Thomas J. Zeff 8/11/06
Thomas J. Zeff DATE

Registration No. 44563

- Land Surveyor, Professional Engineer
- County Surveyor, County Engineer

OFFICE OF THE COUNTY RECORDER

County of _____

I hereby certify that this document was filed in the Co. Recorders office at _____ .M. on the _____ day of _____ A.D., 20____

County Recorder _____

By _____, Deputy

DOCUMENT NO. _____

STATEMENT OF EVIDENCE:

WEST 1/4 CORNER, SECTION 17, T. 102 N., R. 41 W.,
NOBLES COUNTY, MINNESOTA

- 1868 JEWETT & HOWE, US. Deputy Surveyors, monumented corner.
- 1952 Nobles County found stone, placed wood stake; no ties.
- 1960 Nobles County found stake, placed iron pin; no ties.
- 1963 MN DOT R/W Map for I-90, shows corner found and being 100' north from C/L of I-90 survey line.
- 1980 Nobles County found iron pin.
Ties: NW-75.38' to 1"X2" stake on fence post;
NE-83.02' to 1"X2" stake on fence post;
SE-90.93' to 1"X2" stake on fence post.
- 3/08/2006 Ulteig Engineers, Inc., Survey Crew, Dennis Lavallie Party Chief, found nail in C/L 100.3' north from 1/4 corner; rejected its location.
Set 5/8" rebar with cap: RLS 44563 to agree with the MN DOT R/W Map for I-90, retracement location for said 1/4 corner.
Ties: NW-47.1' to PK nail in wood poer pole, SE side;
W-39.8' to PK nail in wood power pole, E side;
S-50.4' to PK nail in wood power pole, N side.