

## CERTIFICATE OF LOCATION OF GOVERNMENT CORNER

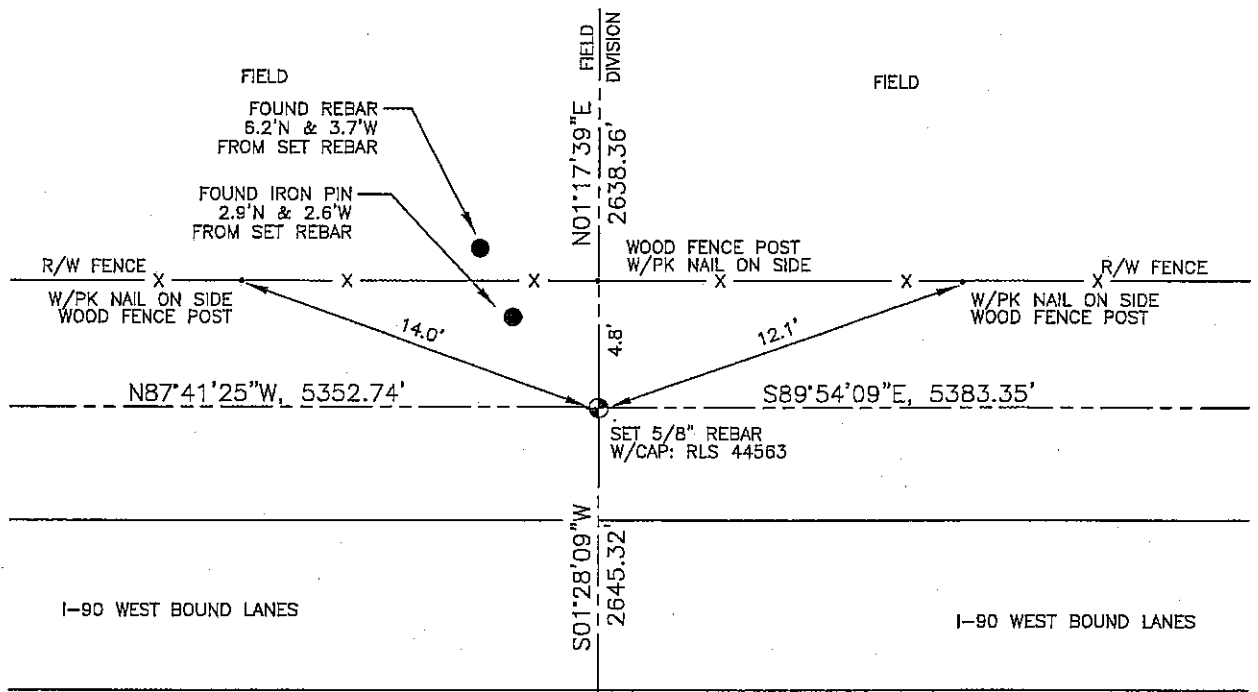
WEST 1/4 Corner of Section 18, Township 102, Range 41, 5TH P.M.

STATE OF MINNESOTA, County of NOBLES

At the corner location shown on the sketch :

- On 3/08/2006 found AN IRON PIN, 2.9'N & 2.3'W AND AN IRON REBAR, 6.2'N & 3.7'W FROM 1/4 CORNER.
- left monument as found,  lowered monument,  removed monument (explain)
- On 3/08/2006 set A 5/8" REBAR WITH CAP: RLS 44563 AT 1/4 CORNER.

Sketch of reference ties



N: 565,889.12  
E: 2,144,462.12  
MN SOUTH ZONE, NAD 83  
NOT TO SCALE

Statement of evidence relative to this corner location is on back page

I hereby certify that this document and the data contained herein was prepared by me or under my direct supervision.

Thomas V. Zeff 8/11/06  
Thomas V. Zeff Date

- Registration No. 44563
- Land Surveyor,  Professional Engineer
  - County Surveyor,  County Engineer

### OFFICE OF THE COUNTY RECORDER

County of \_\_\_\_\_

I hereby certify that this document was filed in the Co. Recorders office at \_\_\_\_\_ M. on the day of \_\_\_\_\_ A.D. , 20

County Recorder \_\_\_\_\_  
By \_\_\_\_\_, Deputy

DOCUMENT NO. \_\_\_\_\_

STATEMENT OF EVIDENCE:

WEST 1/4 CORNER, SECTION 18, T. 102 N., R. 41 W.,  
NOBLES COUNTY, MINNESOTA

- 1867 T.B. Walker, US. Deputy Surveyor, monumented west range line.
- 1963 MN DOT R/W Map for I-90, File #18-6, sheet 8/10, calls for the 1/4 corner being at the intersection of the north-south road and the east-west fence line.
- 3/08/2006 Ulteig Engineers, Inc., Survey Crew, Dennis Lavallie Party Chief,  
Set a 5/8" rebar with cap: RLS 44563 at 1/4 corner so as to be in harmony with the retracement location of said corner as per the MN DOT R/W Map for I-90.  
Found an iron pin, 2.9' north and 2.6' west from set rebar.  
Found another rebar 6.2' north and 3.7' west from set rebar.  
Rejected locations of both found monuments.  
Ties: N-4.8' to PK nail in wood fence post;  
NE-12.1' to PK nail in wood fence post;  
NW-14.0' fo PK nail in wood fence post;  
N-2638.36' to NW corner, Section 18;  
S-2645.32' to SW corner, Section 18;  
E-5383.35' to E 1/4 corner, Section 18;  
W-5352.74' to W 1/4 corner, Section 13, T102, R42W.