

CERTIFICATE OF LOCATION OF GOVERNMENT CORNER

WEST 1/4 Corner of Section 2, Township 102N, Range 41W, 5TH P.M.

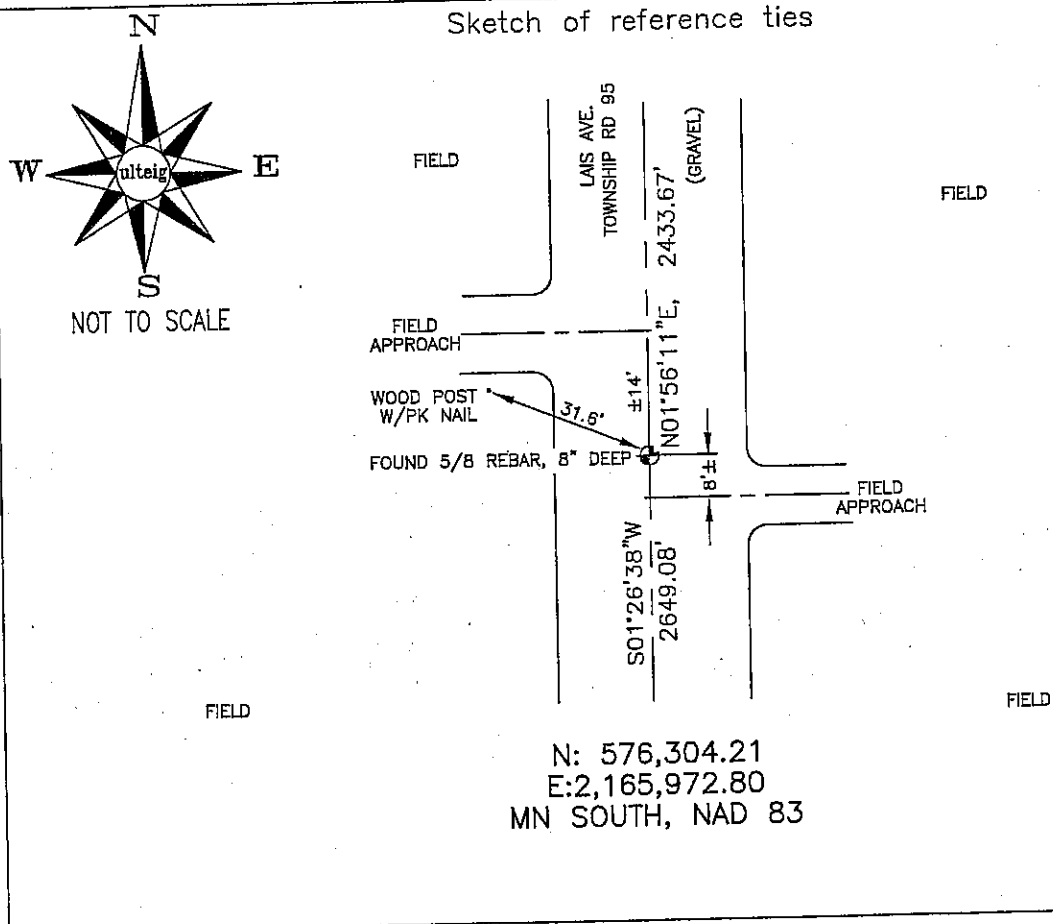
STATE OF MINNESOTA, County of NOBLES

At the corner location shown on the sketch :

On 3/06/2006 found 5/8" REBAR, 8" DEEP, IN C/L OF GRAVEL RD.

left monument as found, lowered monument, removed monument (explain)

On _____ set _____



N: 576,304.21
E: 2,165,972.80
MN SOUTH, NAD 83

Statement of evidence relative to this corner location is on back page

I hereby certify that this document and the data contained herein was prepared by me or under my direct supervision.

Thomas V. Zepf 5/15/2006
 Thomas V. Zepf Date

Registration No. 44563
 Land Surveyor, Professional Engineer
 County Surveyor, County Engineer

OFFICE OF THE COUNTY RECORDER

County of _____

I hereby certify that this document was filed in the Co. Recorders office at _____ .M. on the day of _____ A.D. , 20

County Recorder _____
 By _____, Deputy

DOCUMENT NO. _____

STATEMENT OF EVIDENCE:

WEST 1/4 CORNER, SECTION 2, T. 102 N., R. 41 W.,
NOBLES COUNTY, MINNESOTA

- 1867 Jewett & Howe, US. Deputy Surveyors, monumented corner.
- 1897 Nobles Co. set stone on corner, no ties.
- 3/06/2006 Ulteig Engineers, Inc., Survey Crew, Dennis Lavallie, Party Chief,
found a 5/8" rebar, 8" deep, in the C/L of the gravel road.
Ties: NW-31.6' to PK nail in N side of wood, power pole;
N-2433.67' to NW corner, Section 2;
S-2649.08' to SW corner, Section 2.