

CERTIFICATE OF LOCATION OF GOVERNMENT CORNER

EAST QUARTER Corner of Section 18, Township 102N, Range 42W, 5 P.M.

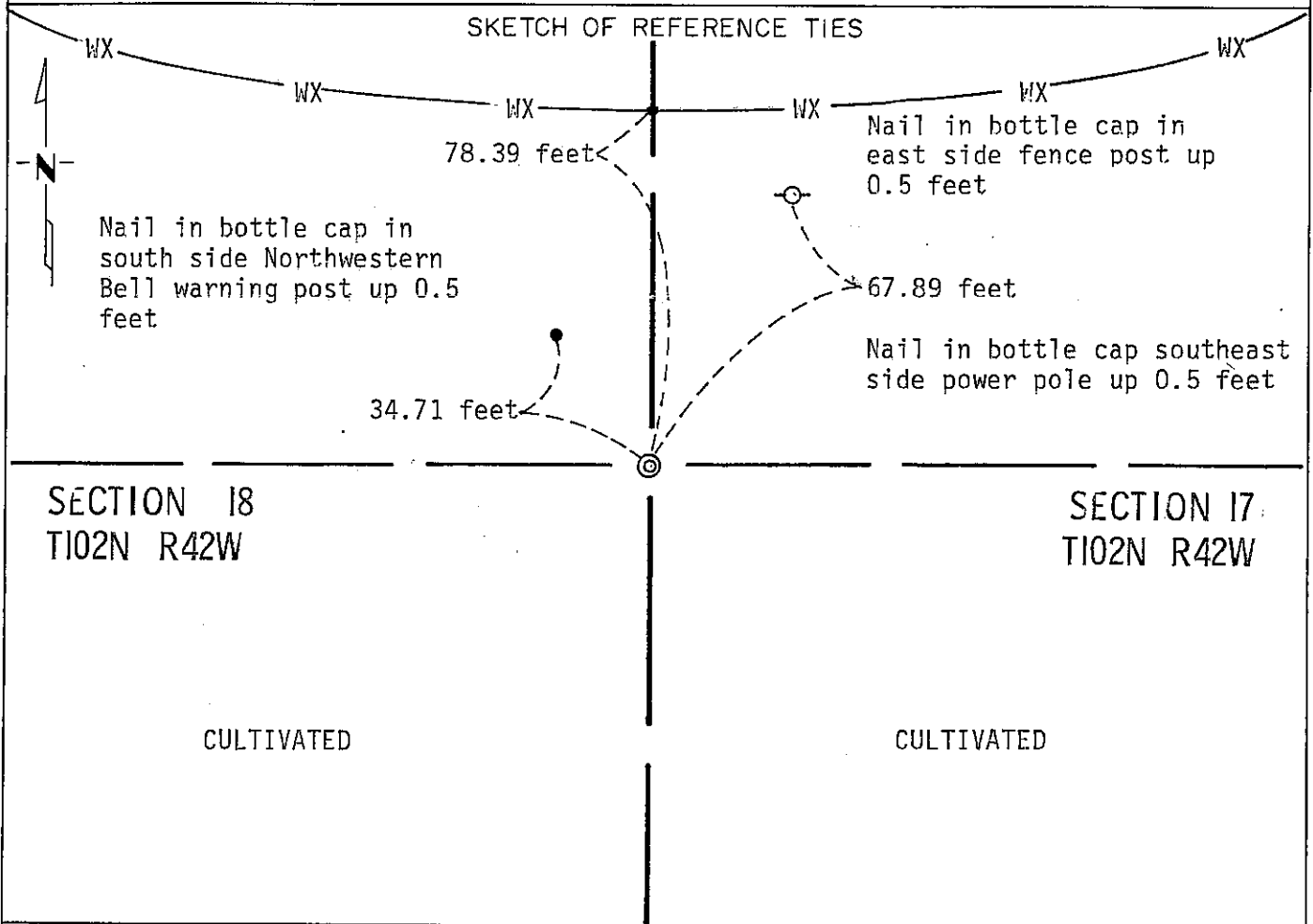
STATE OF MINNESOTA, County of NOBLES

At the corner location shown on the sketch:

On July 7, 1988 found a 3/4 inch by 2 1/2 inch iron pin flush, 10 inch by 10 inch
by 16 inch stone down 23 inches.

left monument as found, lowered monument, removed monument (explain)

On _____ placed a _____



Statement of evidence relative to this corner location is on back of page.

I hereby certify that this document and the data contained herein was prepared by me or under my direct supervision.

Allan E. Schorn 4-5-91
SIGNATURE DATE

Registration No. 11858

Land Surveyor, Professional Engineer

County Surveyor, County Engineer

OFFICE OF THE COUNTY RECORDER

County of Nobles

I hereby certify that this document was filed in the Co. Recorders office at 4:00 P. .M. on the 15th day of October A.D., 1991

County Recorder James Howard

By _____, Deputy

DOCUMENT NO. 245758

Statement of Evidence: East Quarter Corner of Section 18 T102N R42W 5th P.M.

- Oct. 2, 1868 The original Public Land Survey was run in 1868 by Deputy Surveyor R. H. L. Jewett, and his notes state: "set post in mound with pits for $\frac{1}{4}$ sec. cor."
- Sept. 21-25, 1911 William A. Saxon, Nobles County Surveyor, did a survey at the request of Joseph P. Lynch, owner of land in Section 18-102-42. On his plat of the survey he certifies that a stone with a "+" in place is the monument for the east quarter Section 18. Measurements were 1297.5 feet north of the center of railroad track, 2643.7 feet west to the center section and 5023.1 feet west to the range line.
- 1937 & 1959 Nobles County Highway Department records show a stone in 1937 and a stone in 1959 when an iron pin was placed.
- July 7, 1988 Minnesota Department of Transportation survey crew members O. Berkness and W. Hartman located a $\frac{3}{4}$ inch by $2\frac{1}{2}$ inch iron pin directly over a 10 inch by 10 inch by 16 inch stone with no visible markings. All monuments were left as found.
- The in place location of the iron pin is compatible with the occupation lines within the section. An analysis of the Statement of Evidence and the field measurements indicates that the iron pin is in a reasonable location for the corner.
- For additional information, including the field measurements and photographs, contact the Minnesota Department of Transportation in Windom, Minnesota.

Tract DL Completed _____
 Photo DL _____
 Fee DL _____