

CERTIFICATE OF LOCATION OF GOVERNMENT CORNER

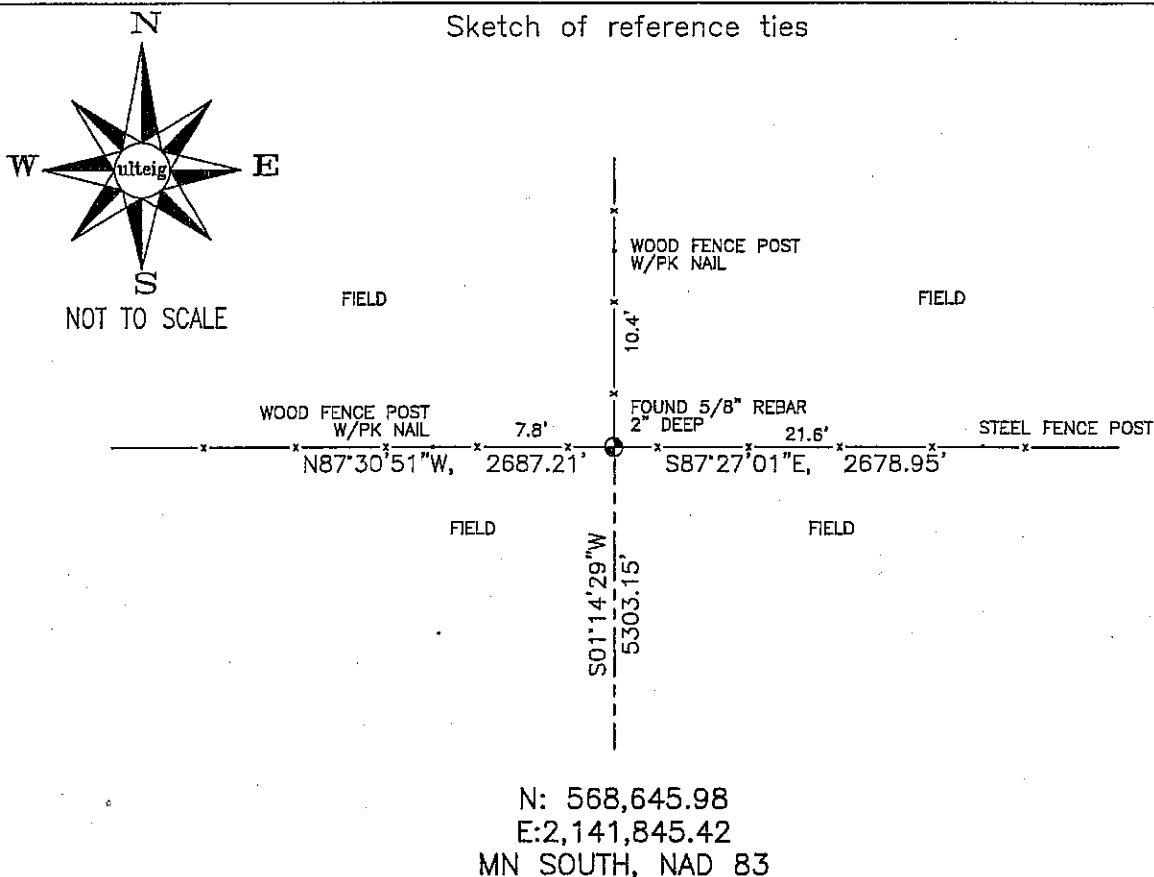
NORTH 1/4 Corner of Section 13, Township 102N Range 42W, 5TH P.M.

STATE OF MINNESOTA, County of NOBLES

At the corner location shown on the sketch :

- On 3/09/2006 found 5/8" REBAR, 2" DEEP, AT INTERSECTION OF
EAST, WEST &, NORTH FENCE LINES.
 left monument as found, lowered monument, removed monument (explain)
 On _____ set _____

Sketch of reference ties



Statement of evidence relative to this corner location is on back page

I hereby certify that this document and the data contained herein was prepared by me or under my direct supervision.

Thomas V. Zeff 5/17/06
 Thomas V. Zeff Date

Registration No. 44563

- Land Surveyor, Professional Engineer
 County Surveyor, County Engineer

OFFICE OF THE COUNTY RECORDER

County of _____

I hereby certify that this document was filed in the Co. Recorders office at _____ .M. on the day of _____ A.D. , 20

County Recorder _____
 By _____, Deputy

DOCUMENT NO. _____

STATEMENT OF EVIDENCE:

NORTH 1/4 CORNER, SECTION 13, T. 102 N., R. 42 W.,
NOBLES COUNTY, MINNESOTA

1868 Jewett & Howe, US. Deputy Surveyors, monumented corner.

3/09/2006 Ulteig Engineers, Inc., Survey Crew, Dennis Lavallie Party Chief,
found a 5/8" rebar, 2" deep at the intersection of fences
running north, east and west.

Ties: N-10.4' to PK nail in wood, fence post;

E-21.6' to steel, fence post;

W-7.8' to PK nail in wood, fence post;

E-2678.95' to NE corner, Section 13;

S-5303.15' to South 1/4 corner, Section 13;

W-2687.21' to NW corner, Section 13.