

CERTIFICATE OF LOCATION OF GOVERNMENT CORNER

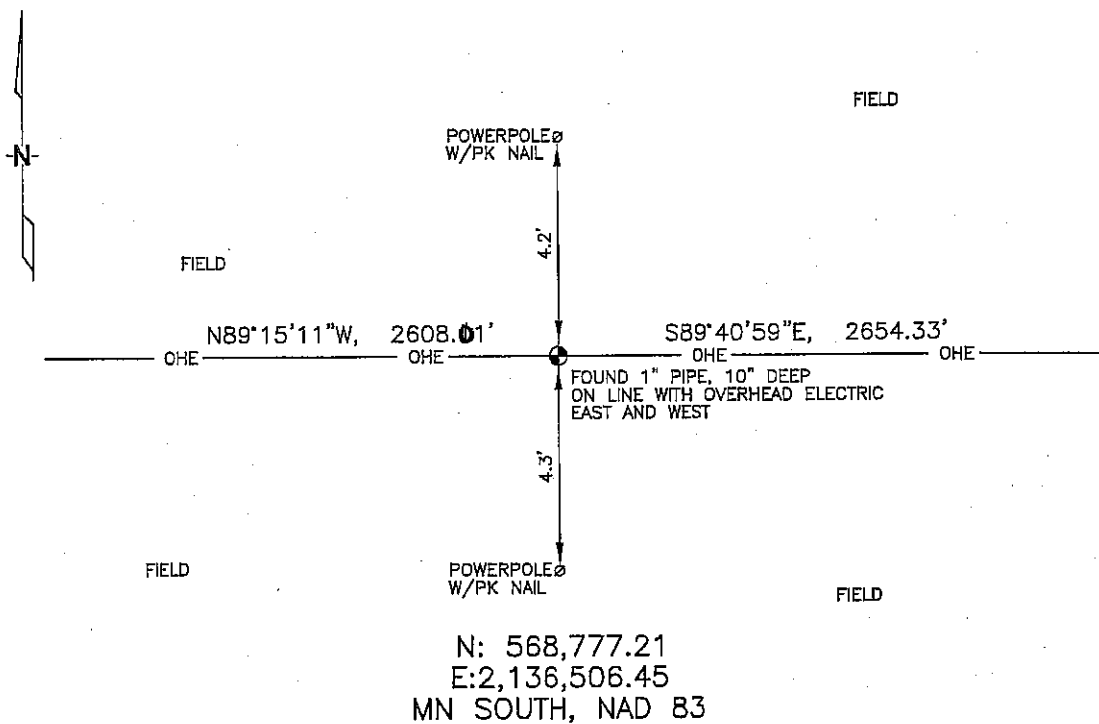
NORTH 1/4 Corner of Section 14, Township 102N, Range 42W, 5TH P.M.

STATE OF MINNESOTA, County of NOBLES

At the corner location shown on the sketch :

- On 3/09/2006 found A 1" IRON PIPE, 10" DEEP, ON LINE WITH
OVERHEAD POWER LINE, RUNNING EAST & WEST.
 left monument as found, lowered monument, removed monument (explain)
- On _____ set _____

Sketch of reference ties



Statement of evidence relative to this corner location is on back page

I hereby certify that this document and the data contained herein was prepared by me or under my direct supervision.

Thomas V. Jeff 5/18/06
 Thomas V. Jeff Date
 Registration No. 44563

- Land Surveyor, Professional Engineer
 County Surveyor, County Engineer

OFFICE OF THE COUNTY RECORDER

County of _____

I hereby certify that this document was filed in the Co. Recorders office at _____ .M. on the day of _____ A.D. , 20

County Recorder _____

By _____, Deputy

DOCUMENT NO. _____

STATEMENT OF EVIDENCE:

NORTH 1/4 CORNER, SECTION 14, T. 102 N., R. 42 W.,
NOBLES COUNTY, MINNESOTA

- 1868 Jewett & Howe, US. Deputy Surveyors, monumented corner.
- 3/09/2006 Ulteig Engineers, Inc., Survey Crew, Dennis Lavallie Party Chief,
found a 1" iron pipe, 10" deep, on line with overhead power line.
Ties: N-4.2' to PK nail in S face of wood, north support, power pole;
S-4.3' to PK nail in N face of wood, south support, power pole;
E-2654.33' to NE corner, Section 14;
W-2608.01' to NW corner, Section 14.