

CERTIFICATE OF LOCATION OF GOVERNMENT CORNER

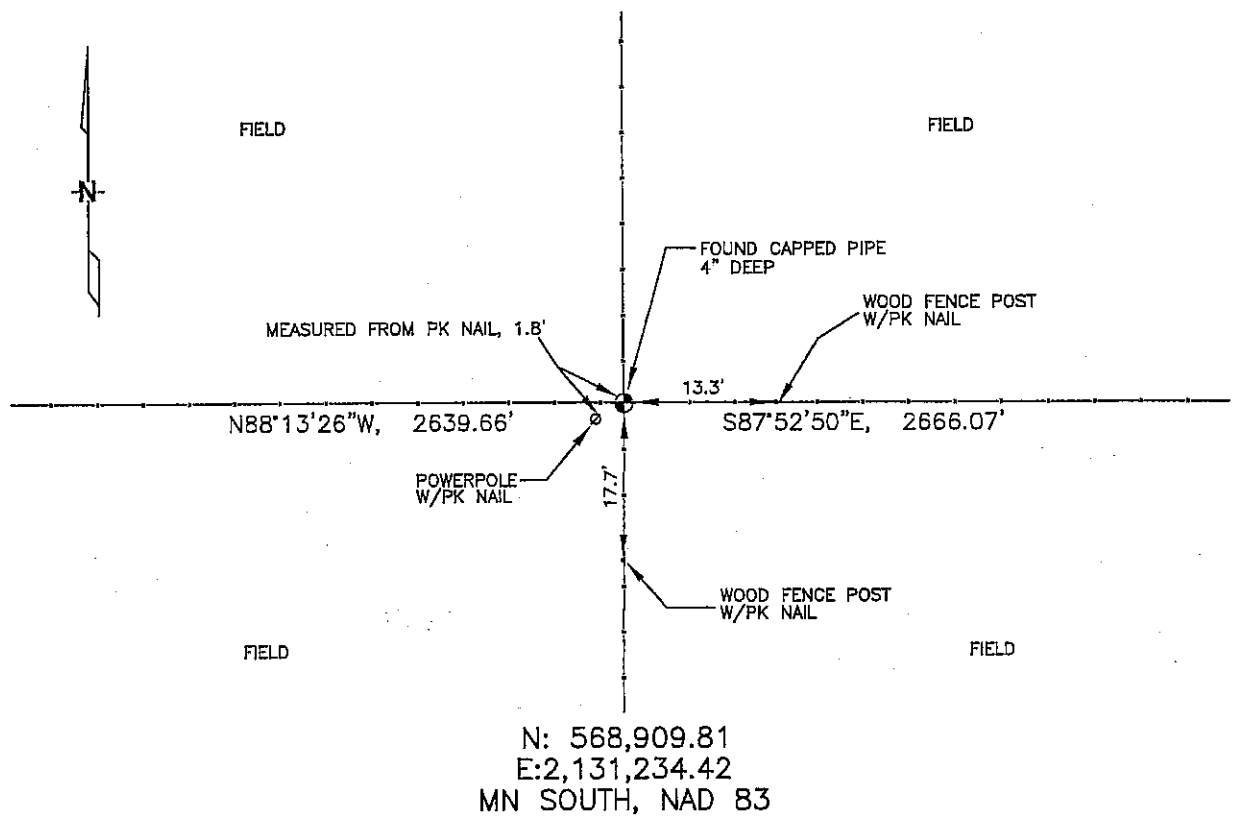
NORTH 1/4 Corner of Section 15, Township 102N, Range 42W, 5TH P.M.

STATE OF MINNESOTA, County of NOBLES

At the corner location shown on the sketch :

- On 3/10/2006 found AN IRON PIPE WITH AN UNREADABLE CAP,
4" DEEP, AT INTERSECTION OF FENCES, RUNNING N, S, E & W.
 left monument as found, lowered monument, removed monument (explain)
- On _____ set _____

Sketch of reference ties



Statement of evidence relative to this corner location is on back page

I hereby certify that this document and the data contained herein was prepared by me or under my direct supervision.

Thomas V. Zell 5/18/06
 Thomas Zell Date
 Registration No. 44563

- Land Surveyor, Professional Engineer
 County Surveyor, County Engineer

OFFICE OF THE COUNTY RECORDER

County of _____

I hereby certify that this document was filed in the Co. Recorders office at _____ M. on the day of _____ A.D., 20

County Recorder _____
 By _____, Deputy

DOCUMENT NO. _____

STATEMENT OF EVIDENCE:

NORTH 1/4 CORNER, SECTION 15, T. 102 N., R. 42 W.,
NOBLES COUNTY, MINNESOTA

- 1868 Jewett & Howe, US. Deputy Surveyors, monumented corner.
- 3/10/2006 Ulteig Engineers, Inc., Survey Crew, Dennis Lavallie Party Chief, found an iron pipe with an unreadable cap, at the intersection of fence lines running: north, south, east & west.
Ties: E-13.3' to PK nail on W face of wood, fence post;
S-17.7' to PK nail in N face of wood, fence post;
SW-1.8' to PK nail in NE face of wood, power pole;
E-2666.07' to NE corner, Section 15;
W-2639.66' to NW corner, Section 15.